



Violetta Tudorache

+40 729 005 624

contact@blissimobiliare.ro
(mailto:contact@blissimobiliare.ro)

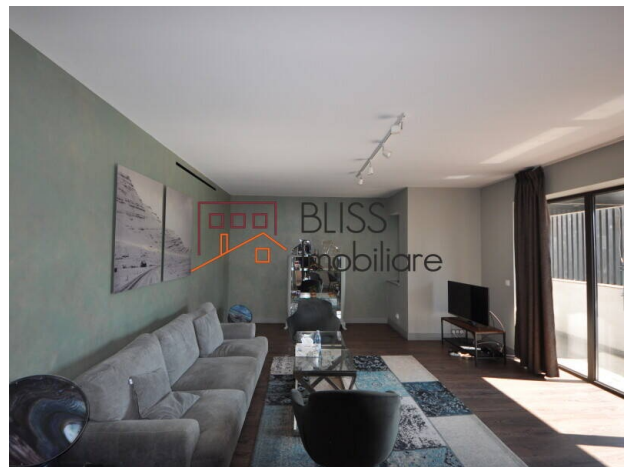
Updated on 26 March 2026

Premium 2-Bedroom Apartment with parking

580,000 EUR

Web Reference
#105073

Seasons Primaverii, Primaverii, Bucharest



<https://blissimobiliare.ro/index.php/en/apartment-2-bedrooms-for-sale-dorobanti-primaverii-kiseleff-aviatorilor-bucharest-105073> (<https://blissimobiliare.ro/index.php/en/apartment-2-bedrooms-for-sale-dorobanti-primaverii-kiseleff-aviatorilor-bucharest-105073>)

Description

Luxury 2-Bedroom Apartment - Elegance in the Heart of Primăverii

Fully Furnished Residence With Private Parking Space

We present a rare property located in Bucharest's most coveted neighborhood: Primăverii. This 2-bedroom apartment represents a perfect symbiosis between modern comfort and the prestige of a historic location, designed with a refined aesthetic that meets the highest standards of luxury.

Interior Design and Layout

The apartment stands out through its bright spaces and exceptional interior design, where every element has been chosen to create an atmosphere of distinction:

- Living Area: A generous living room with large windows that allow natural light to showcase the premium furniture pieces.
- Bedrooms: The 2 bedrooms are designed as total relaxation zones, offering peace and privacy.
- Bathrooms: 2 modern bathrooms, finished with top-quality materials.

Premium Amenities and Benefits

Beyond aesthetics, the apartment offers maximum functionality in today's urban context:

- **Parking:** Includes one parking space in the underground garage, an essential and highly valuable facility for the Primăverii area.
- **Comfort:** Modern climate control and heating systems for an ideal temperature year-round.
- **Exclusivity:** The building is located in a secured area, providing the necessary discretion for its residents.

Location: The Symbol of Bucharest's Prestige

Living in Primăverii, you are part of an elite community, with everything within walking distance:

- **Nature:** Immediate proximity to Herastrau Park and Bordei Park.
- **Education and Culture:** Quick access to Jean Monnet High School and the most prestigious institutions in the area.
- **Lifestyle:** Luxury restaurants, chic cafes, and exclusive boutiques, all within a green and quiet setting.

At BLISS Imobiliare, we ensure a seamless experience through professionalism and market expertise. BLISS Imobiliare guides you with clarity and structure.

Property details

Rooms no.	3
Useable surface	98m ²
Constructed surface	118m ²
Apartment type	Apartment
Type of rooms	Semi-independent
Type of comfort	Comfort 1
Bedrooms no.	2
Kitchens no.	1
Bathrooms no.	2
Building type	Block
Year built	2014
Config	1S+DS+HP+6
Floor	3
Balconies no.	2
State	Finished
Elevator	Yes
Parking inside	1

Amenities

 Equipped kitchen

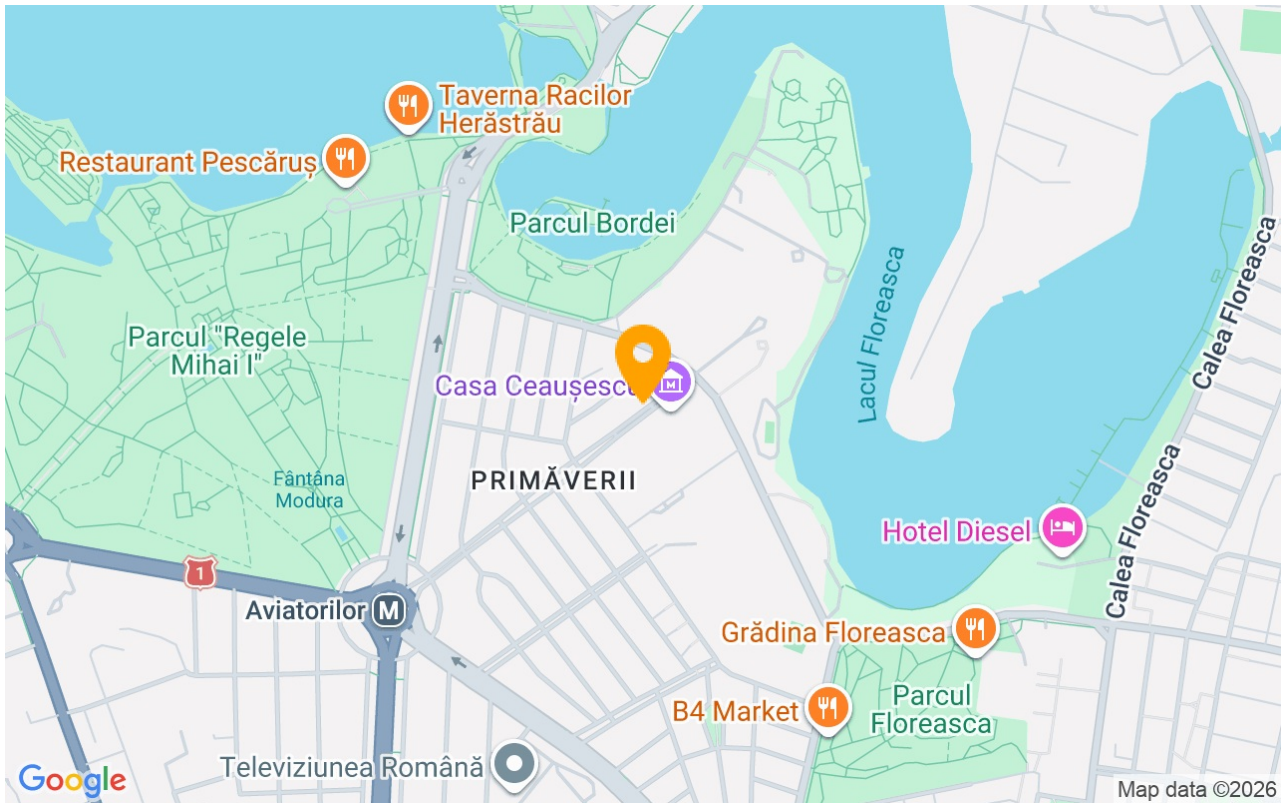
 Dishwasher

 Furnished

 Private heating

 Air conditioning

Location



Photos

