



Violetta Tudorache

+40 729 005 624

contact@blissimobiliare.ro
(mailto:contact@blissimobiliare.ro)

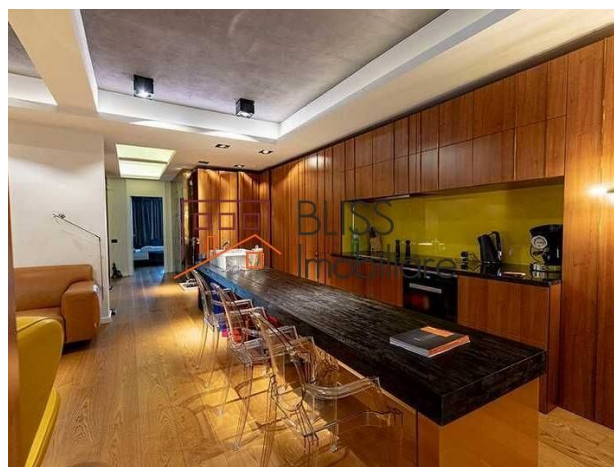
Updated on 21 January 2025

2 bedroom apartment

📍 Baneasa Garlei, Bucharest

Web Reference

#105443



<https://blissimobiliare.ro/index.php/en/apartment-2-bedrooms-for-rent-baneasa-sisesti-jandarmerie-straulesti-sector-1-bucharest-105443> (<https://blissimobiliare.ro/index.php/en/apartment-2-bedrooms-for-rent-baneasa-sisesti-jandarmerie-straulesti-sector-1-bucharest-105443>)

Description

This 2-bedroom apartment is located in an exclusive boutique building (D+P+2E) completed in 2016, right on the shore of Lake Băneasa. The apartment is situated on the first floor and is the only one on this level.

It includes a living room, two bedrooms, and two bathrooms.

In the basement, there is a shared technical area housing the central heating system and washing machine, along with a spacious 12 sq.m. storage room furnished as a dressing room.

The finishes in both the apartment and the entire building are unique and high-quality: solid wood, stone, marble, glass, metal cladding, a fireplace, shutters, etc.

The entire glass wall of the living room opens onto a terrace facing the lake.






There is a shared garden with the other two apartments, maintained regularly, as well as a parking space.

The area is very quiet, and nearby there is a park as well as a specialty coffee shop.

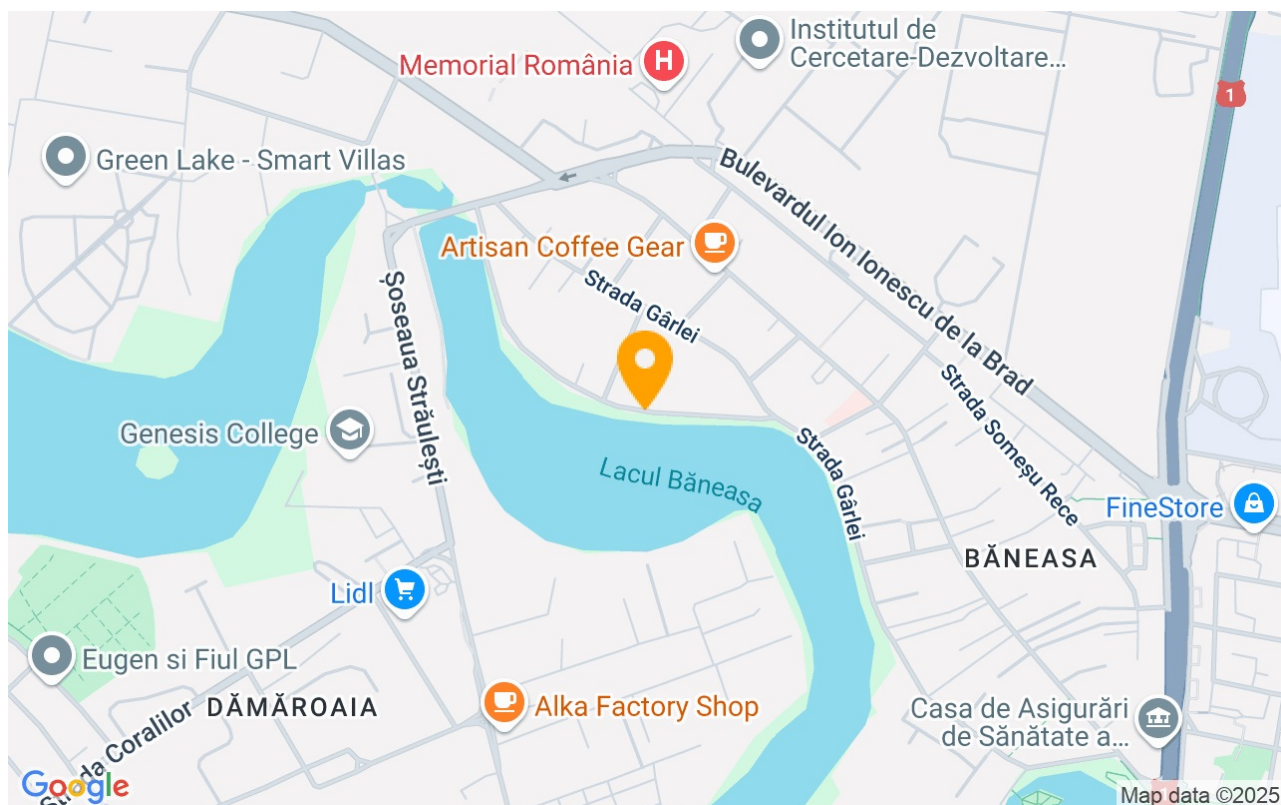
Property details

Rooms no.	3
Useable surface	100m²
Constructed surface	110m²
Apartment type	Apartment
Type of rooms	Independent
Type of comfort	Deluxe
Bedrooms no.	2
Kitchens no.	1
Bathrooms no.	2
Building type	Block
Year built	2016
Config	DS+HP+3
Floor	1
Balconies no.	1
State	Finished
Elevator	No
Parking inside	1
Parking outside	1
Storage no.	1

Amenities

-  Equipped kitchen
-  Furnished
-  Private heating
-  Suitable for office
-  Air conditioning

Location



Photos

