



Violetta Tudorache

+40 729 005 624

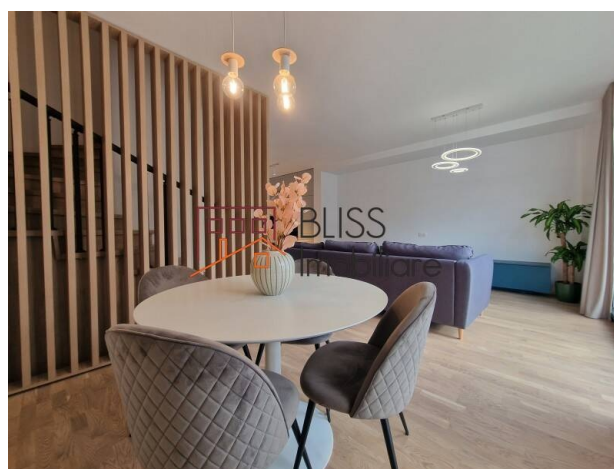
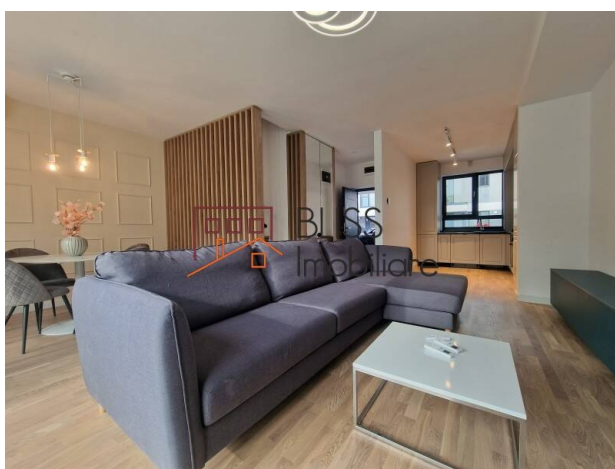
contact@blissimobiliare.ro
(mailto:contact@blissimobiliare.ro)

Updated on 19 November 2025

135sqm 4-bedroom villa with 30sqm private garden ZenVille

📍 ZenVille, Pipera Nord, Bucharest / Ilfov

Web Reference
#107040



<https://blissimobiliare.ro/index.php/en/villa-4-bedrooms-for-rent-iancu-nicolae-pipera-bucharest-ilfov-107040> (<https://blissimobiliare.ro/index.php/en/villa-4-bedrooms-for-rent-iancu-nicolae-pipera-bucharest-ilfov-107040>)

Description

Superb 4-bedroom villa located in the ZenVille residential project in the Pipera Nord area.

Easy access to international schools and kindergartens

It consists of 4 bedrooms, a spacious living room, a fully equipped open space kitchen (including a dishwasher), 3 bathrooms and a guest toilet.

The villa benefits from a built area of 135sqm, of which 111sqm usable, its configuration being GF+1+AT.

This house also has a 30sqm private yard and 3 outdoor parking spaces. The total surface of the land is 100sqm, the footprint of the house being 70sqm.

The project is a "closed community" type with controlled access, planned to include a total of 97 houses in a row system, each house benefiting from parking spaces and its own garden.

Safety is paramount for future residents, so the entire complex will be guarded and monitored.






The whole complex, which is developed on a plot of 15,606 sqm, provides generous access roads for each section of houses with sidewalks, parking for visitors, playground for children, generous green spaces.

The development area is strictly residential, withdrawn from the hustle and bustle of the main arteries and benefits from clean air, in only 10 minutes on foot, being able to reach the Băneasa Forest.

Property details

Rooms no.	5
Useable surface	111m²
Constructed surface	135m²
Bedrooms no.	4
Kitchens no.	1
Bathrooms no.	3
Toilets no.	1
Building type	Villa
Year built	2021
State	Finished
Total land	100m²
Print	70m²
Courtyard	30m²
Parking outside	3

Amenities

-  Equipped kitchen
-  Dishwasher
-  Furnished
-  Private heating
-  Air conditioning

Location



Photos

