



**Violetta Tudorache**

+40 729 005 624

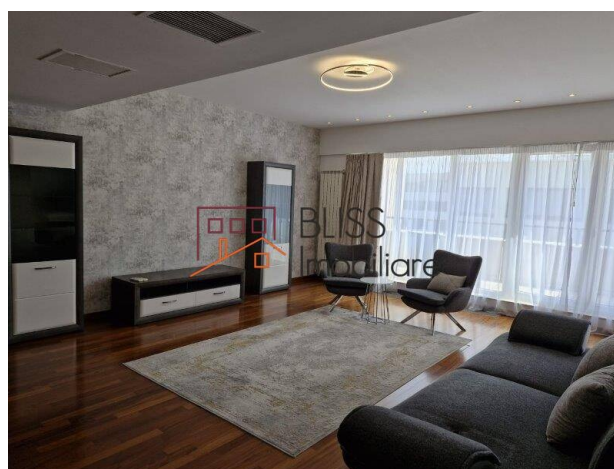
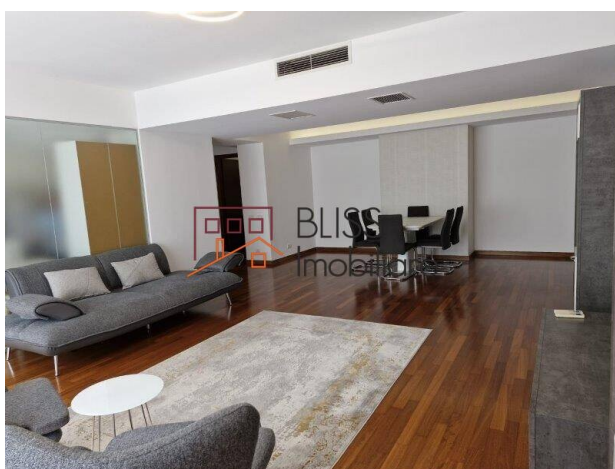
contact@blissimobiliare.ro  
(mailto:contact@blissimobiliare.ro)

Updated on 9 September 2024

## Luxury 2-Bedroom Apartment with Park View

📍 Nordului, Bucharest

Web Reference  
**#110398**



<https://blissimobiliare.ro/index.php/en/apartment-2-bedrooms-for-rent-herastrau-nordului-bucharest-110398> (<https://blissimobiliare.ro/index.php/en/apartment-2-bedrooms-for-rent-herastrau-nordului-bucharest-110398>)

### Description

Discover this spacious 3-room semi-detached apartment, fully furnished and situated on the 5th floor of a building with ground floor and 5 floors, facing Herastrau Park. The property includes two underground parking spaces and a storage unit. With a surface area of 160 sqm, the apartment comprises a generous living room with access to a balcony or terrace, a fully furnished and equipped kitchen, two bedrooms with dressing rooms, two bathrooms (one with a bathtub and one with a shower), an entrance hall with a dressing room, a second hall with another dressing room, and a second terrace that can also serve as a master bedroom.

### Secure Building with 24/7 Surveillance

The property features central heating for the entire building, thermostats for efficient temperature control, and air conditioning installations with individual thermostats for each room. The building is secured with surveillance cameras and 24/7 security personnel.






High-quality finishes include hardwood and marble floors, marble cladding in bathrooms, metal doors, double-glazed windows, and internet/TV network. With a panoramic view of Herastrau Park, this apartment offers an opportunity to live in a privileged location, with a comfortable and secure environment.



Property details

|                       |                  |
|-----------------------|------------------|
| Rooms no.             | 3                |
| Useable surface       | 124m²            |
| Constructed surface   | 158m²            |
| Apartment type        | Apartment        |
| Type of rooms         | Semi-independent |
| Type of comfort       | Comfort 1        |
| Bedrooms no.          | 2                |
| Kitchens no.          | 1                |
| Bathrooms no.         | 2                |
| Building type         | Block            |
| Year built            | 2009             |
| Config                | 1S+P+6           |
| Floor                 | 5                |
| Balconies no.         | 2                |
| State                 | Finished         |
| Elevator              | Yes              |
| Parking inside        | 2                |
| Storage no.           | 1                |
| Earthquake risk class | Unclassified     |

Amenities

-  Equipped kitchen
-  Furnished
-  Private heating
-  Suitable for office
-  Air conditioning



## Location



## Photos

