



Violetta Tudorache

+40 729 005 624

contact@blissimobiliare.ro
(mailto:contact@blissimobiliare.ro)

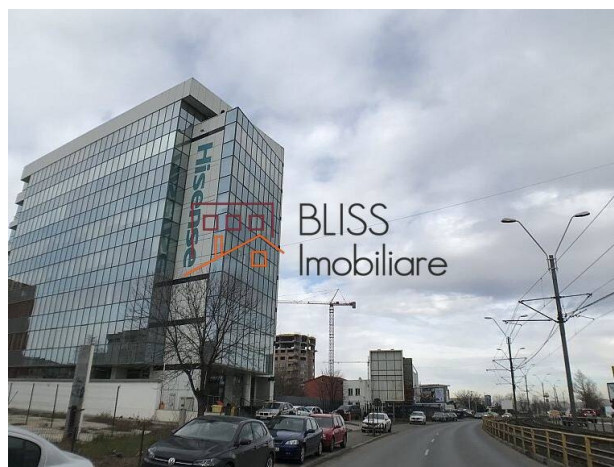
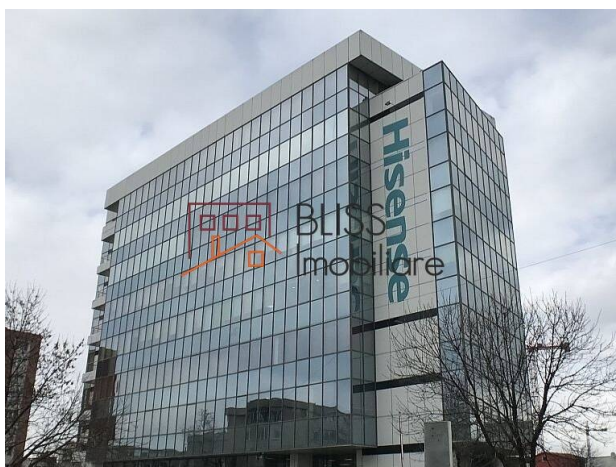
Updated on 20 October 2025

Office space

📍 Virtuții Business Center, Virtutii, Bucharest

1,228 EUR +VAT / month

Web Reference
#111415



<https://blissimobiliare.ro/index.php/en/office-space-for-rent-virtutii-bucharest-111415>
(<https://blissimobiliare.ro/index.php/en/office-space-for-rent-virtutii-bucharest-111415>)

Description

Virtuții Business Center - 7th Floor, 144.5 sqm Office Space

Premium Office Building with Excellent Access in Western Bucharest

Located in western Bucharest, Virtuții Business Center is a modern office building offering an ideal mix of functionality, accessibility, and aesthetics. Its strategic position near Ciurel Bridge, Splaiul Independenței, and Iuliu Maniu Boulevard ensures quick access to downtown Bucharest, the A1 highway, and the city's main business hubs, including Grozăvești, Orhideea, and Politehnica.

The 7th-floor office space, with a total area of 144.5 sqm (including common areas), is a perfect fit for small and medium-sized companies seeking a bright, flexible, and well-organized workspace. The layout combines efficiency and comfort, allowing tenants to create open-plan areas, private offices, or meeting rooms according to operational needs.

The office enjoys floor-to-ceiling windows that flood the space with natural light throughout the day, while the modern finishes provide a professional and welcoming atmosphere. Key features include:

- raised flooring and suspended ceiling for easy cabling and flexibility,
- LED lighting and individual HVAC control,
- smoke detection and access control systems,
- ready-to-use IT and electrical infrastructure.




Virtuții Business Center offers high-quality amenities such as modern reception, 24/7 security, high-speed elevators, underground and surface parking, and professional building management. The surrounding area provides excellent convenience – restaurants, cafés, banks, supermarkets, and Lujerului metro station are all within walking distance.

With its combination of strategic location, modern design, and functional efficiency, this office space represents an excellent opportunity for companies seeking a professional presence in Bucharest's growing western business corridor.

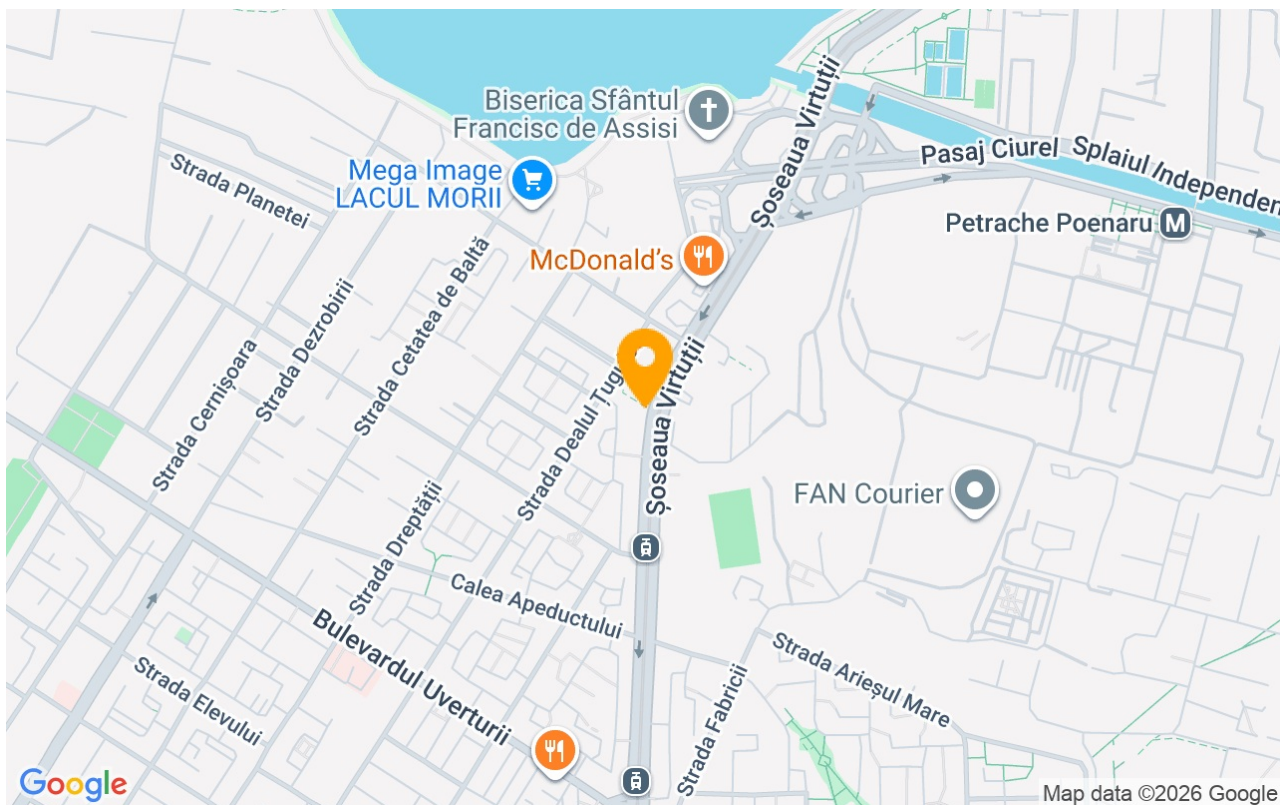
Property details

| | |
|------------------------|------------|
| Constructed surface | 145m² |
| Building type | Block |
| Year built | 2009 |
| State | Finished |
| Elevator | Yes |
| Common service charges | 434.00 EUR |

Amenities

-  Not furnished
-  Suitable for office
-  Air conditioning

Location



Photos

