



Violetta Tudorache

+40 729 005 624

contact@blissimobiliare.ro
(mailto:contact@blissimobiliare.ro)

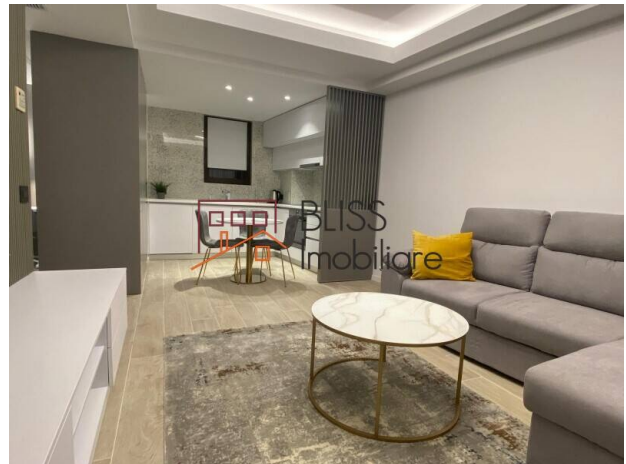
Updated on 23 June 2026

1 bedroom apartment

Herastrau, Bucharest

1,250 EUR/ month

Web Reference
#119009



<https://blissimobiliare.ro/index.php/en/apartment-1-bedroom-for-rent-herastrau-nordului-bucharest-119009> (<https://blissimobiliare.ro/index.php/en/apartment-1-bedroom-for-rent-herastrau-nordului-bucharest-119009>)

Description

BLISS Imobiliare presents you a 1-bedroom apartment, located on the 5th floor of a building with the height regime S+P+5+6R, which is located just 2 minutes from one of the most exclusive areas of the capital, namely Soseaua the North.

The built area of the house is 79.90 sqm, and the usable area is 57.20 sqm, which is divided into the main hall, office, living room with open space kitchen, dressing room / storage space and bathroom, to which is added a terrace of 8,20 sqm.

The apartment is fully furnished and equipped with premium, high quality products.

The property is located just a few steps from Parcul Herastrau, the largest park in the capital, which is famous for its restaurants, clubs and cafes. It facilitates and encourages outdoor sports and relaxation activities, being a safe and wonderful environment for families with children.

The area where the apartment is located is one of the most prestigious and developed areas in Bucharest and offers many advantages for the residents. It is known for its modern architecture, green spaces and quiet atmosphere, making it suitable for families as well as professionals, being close to many important companies and industrial parks.

The exceptional positioning offers quick access to a variety of facilities and services of superior quality. For example, the Promenada Mall shopping center is only 8 minutes away by car, and Baneasa Shopping City, with the most exclusive shops and fine restaurants, is only 20 minutes away, thus offering a varied range of shops, entertainment and restaurants.

Property details

Rooms no.	2
Useable surface	57m ²
Constructed surface	80m ²
Apartment type	Apartment
Type of rooms	Independent
Type of comfort	Comfort 1
Bedrooms no.	1
Kitchens no.	1
Bathrooms no.	1
Building type	Block
Year built	2009
Config	1S+P+6
Floor	5
Balconies no.	1
State	Finished
Elevator	Yes

Amenities

 Equipped kitchen

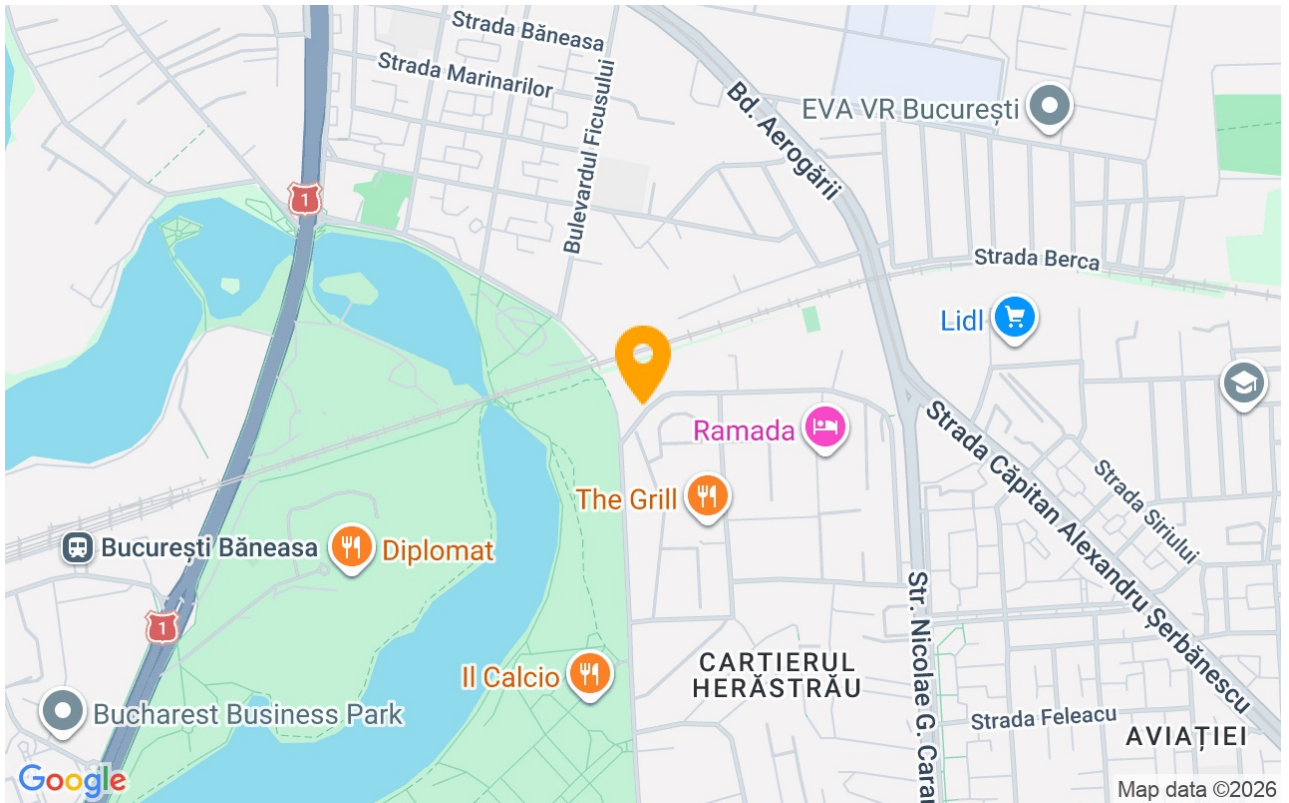
 Dishwasher

 Furnished

 Building heating

 Air conditioning

Location



Photos

