



Violetta Tudorache

+40 729 005 624

contact@blissimobiliare.ro
(mailto:contact@blissimobiliare.ro)

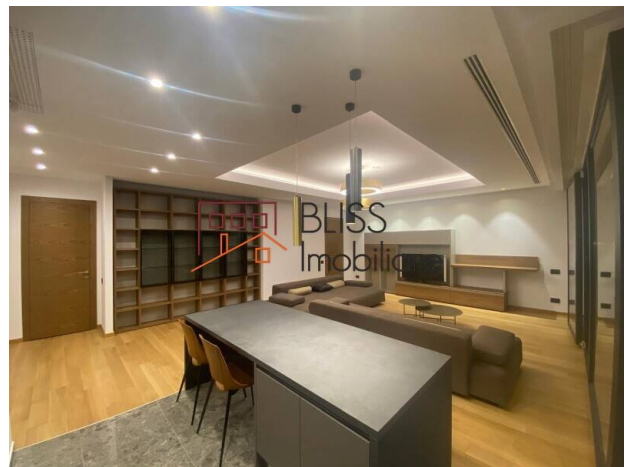
Updated on 26 March 2026

Exclusive 3-Bedroom Penthouse with Parking

Primaverii, Bucharest

5,500 EUR +VAT / month

Web Reference
#122234



<https://blissimobiliare.ro/index.php/en/apartment-penthouse-3-bedrooms-for-rent-dorobanti-primaverii-kiseleff-aviatorilor-bucharest-122234> (<https://blissimobiliare.ro/index.php/en/apartment-penthouse-3-bedrooms-for-rent-dorobanti-primaverii-kiseleff-aviatorilor-bucharest-122234>)

Description

Exclusive 3-Bedroom Penthouse - The Heart of Primăverii District, Near Herastrau Park

Modern Comfort And Elegance In A Building Completed In 2021

We present a distinguished property located in Bucharest's most coveted neighborhood: Primăverii. This spectacular penthouse, situated on the 5th floor of a luxury building completed in 2021, represents the definition of urban refinement, offering a perfect mix between the tranquility of an elite residential area and immediate proximity to the most important points of interest in North Bucharest.

Elegant Space and Detached Layout

With a usable area of 147 sqm, the residence impresses with its high-quality finishes and an intelligent layout designed for maximum comfort:

- Living Area: A spacious and bright living room, fully furnished, opening onto a balcony that offers relaxing views of the surrounding area.
- Sleeping Area: Features 3 generous bedrooms, quiet and perfectly suited for rest and privacy.
- Bathrooms: 2 modern bathrooms with premium finishes, plus an additional guest toilet.

High-End Amenities and Premium Comfort

The property benefits from all the advantages of a state-of-the-art new construction:

- **Climate Control:** Air conditioning system and building central heating for optimal thermal efficiency.
- **Kitchen:** Fully equipped with modern appliances, including a dishwasher.
- **Parking:** Includes 1 indoor parking space in the underground garage—a crucial benefit for comfort and security in the Primăverii area.
- **Building Features:** Secured building equipped with a modern elevator and high-quality finishes in all common areas.

Location: The Supreme Standard of Living

The penthouse's positioning is unbeatable, providing rapid access to the city's top facilities:


- **Nature:** Just a 2-minute walk from Herastrau Park and Floreasca Park.
- **Transportation:** Easy access to the Aviatorilor Metro station and the main arterial roads in the North.
- **Lifestyle:** Immediate proximity to the most select restaurants, specialty cafes, and luxury shops within the Dorobanți-Primăverii perimeter.

Property details


Rooms no.	4
Useable surface	147m ²
Constructed surface	160m ²
Apartment type	Penthouse apartment
Type of rooms	Independent
Type of comfort	Comfort 1
Bedrooms no.	3
Kitchens no.	1
Bathrooms no.	2
Toilets no.	1
Building type	Block
Year built	2021
Config	1S+P+5
Floor	5
Balconies no.	1
State	Finished
Elevator	Yes
Parking inside	1

Amenities

 Equipped kitchen

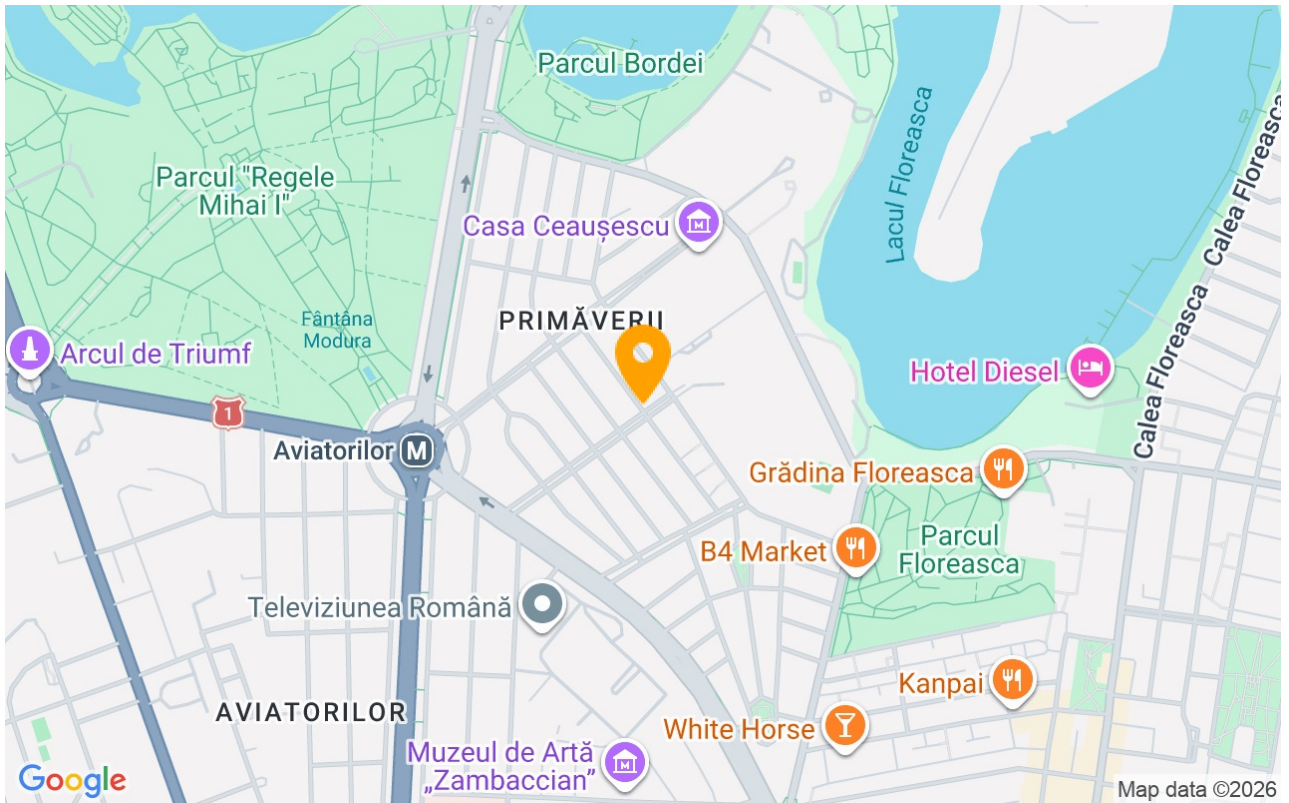
 Dishwasher

 Furnished

 Building heating

 Air conditioning

Location



Photos

