



Violetta Tudorache

+40 729 005 624


contact@blissimobiliare.ro
(mailto:contact@blissimobiliare.ro)

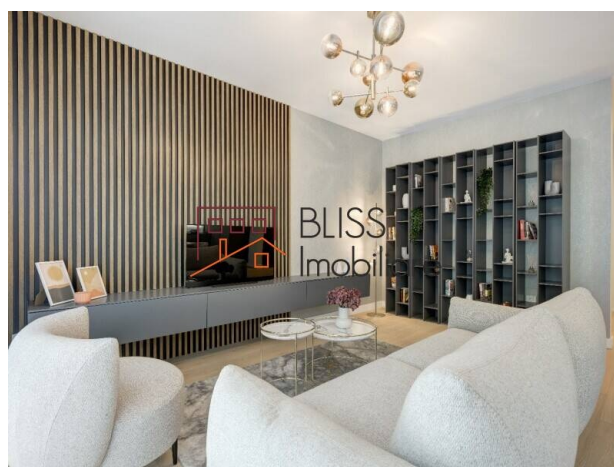
Updated on 25 November 2024

Boutique-Style Duplex With Private Garden

615,855 EUR

Web Reference
#124004

 Iancu Nicolae, Bucharest / Ilfov



<https://blissimobiliare.ro/index.php/en/apartment-3-bedrooms-for-sale-iancu-nicolae-pipera-bucharest-ilfov-124004> (<https://blissimobiliare.ro/index.php/en/apartment-3-bedrooms-for-sale-iancu-nicolae-pipera-bucharest-ilfov-124004>)

Description

This boutique-style duplex, located in the prestigious Pipera – Iancu Nicolae area, blends modern design, comfort, and proximity to nature. The project, built by a team of professionals with meticulous attention to detail, is set in an S+P+3 building designed to meet the highest standards.

Close To Cambridge School And Henri Coandă Airport

Property Features

- **Design and Construction**
 - Duplex with an interior staircase, combining functionality with contemporary aesthetics.
 - Boutique project offering privacy and sophistication.
 - Generous, bright living spaces tailored for modern lifestyles.
- **Outdoor Areas**
 - Private yard, perfect for outdoor relaxation.
 - Large terraces and gardens offering beautiful views and direct contact with nature.
 - Landscaped green spaces creating a serene and exclusive atmosphere.
- **Premium Facilities**
 - Underground parking spaces for convenience and security.
 - Storage units, providing efficient organization solutions.

Advantages of Pipera - Iancu Nicolae Area

This area is a true urban retreat, offering tranquility and proximity to the forest while maintaining easy access to numerous amenities:

- **Top-Tier Education**

- Cambridge School of Bucharest – just a 5-minute walk away.
- British School and American International School, renowned for educational excellence.

- **Shopping and Entertainment**

- Shopping hubs like Băneasa Shopping City, Carrefour Feeria, Mobexpert, and Ikea Băneasa.
- Exclusive restaurants and diverse leisure options.


- **Accessibility and Key Landmarks**

- Close to the U.S. Embassy and Băneasa Zoo.
- Quick access to Henri Coandă International Airport.


Property details


Rooms no.	4
Constructed surface	217m ²
Apartment type	Apartment
Bedrooms no.	3
Bathrooms no.	2
Building type	Block
Config	1S+P+3
Floor	3
State	Project
Elevator	No

Amenities

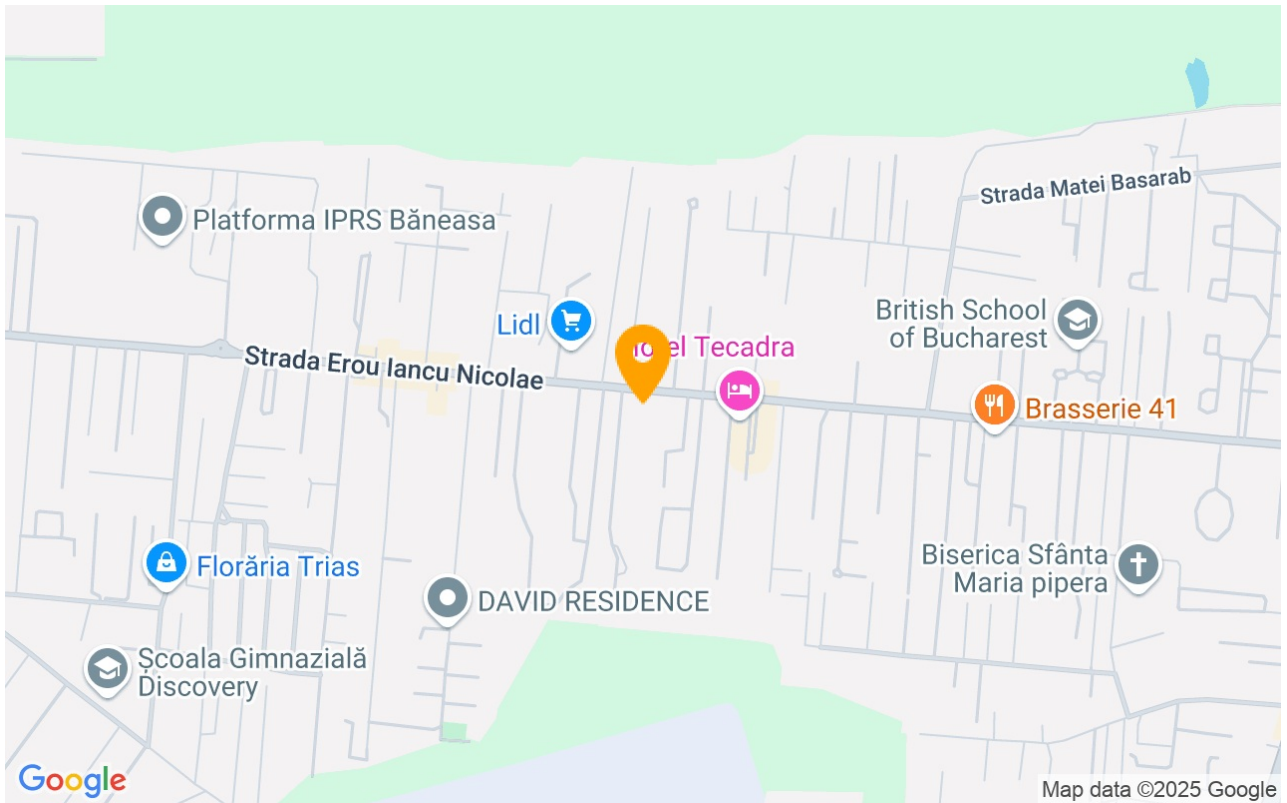
 Equipped kitchen

 Furnished

 Private heating

 Air conditioning

Location



Photos

