



**Violetta Tudorache**

+40 729 005 624

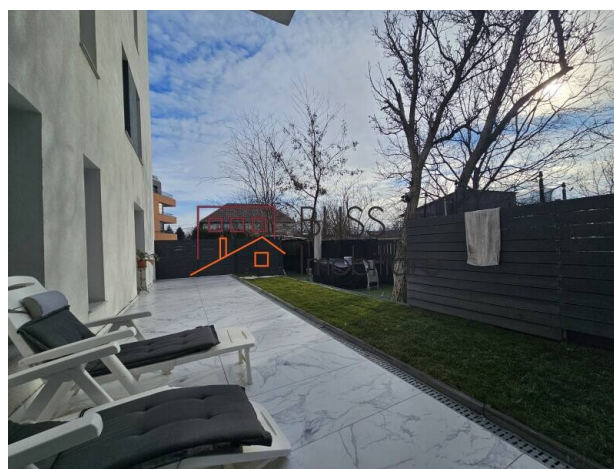
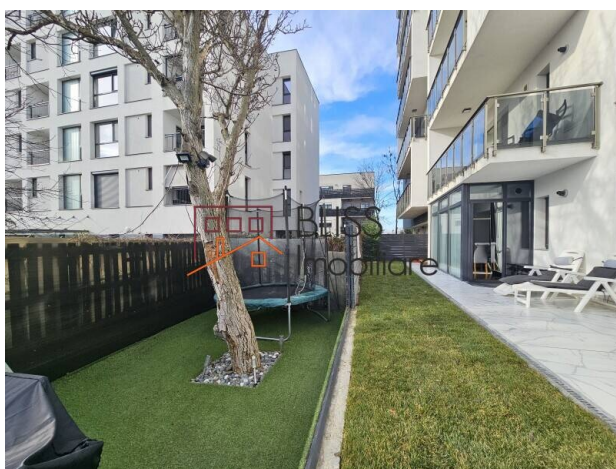
contact@blissimobiliare.ro  
(mailto:contact@blissimobiliare.ro)

Updated on 23 April 2025

## 3-Bedroom Apartment with Garden and two parking places

Beausoleil Residence, Iancu Nicolae Baneasa Zoo, Bucharest

Web Reference  
**#125404**



<https://blissimobiliare.ro/index.php/en/apartment-3-bedrooms-for-rent-iancu-nicolae-pipera-bucharest-125404> (<https://blissimobiliare.ro/index.php/en/apartment-3-bedrooms-for-rent-iancu-nicolae-pipera-bucharest-125404>)

### Description

**Modern 3-Bedroom Ground Floor Apartment with Spacious Garden Terrace in Iancu Nicolae - Băneasa Zoo Area**

## Private Outdoor Space: Garden and Terrace

Experience premium living in this fully furnished, contemporary 3-bedroom apartment, offering a net living area of approximately 100 sqm, complemented by a 115 sqm private garden and terrace. Located in the prestigious Iancu Nicolae – Băneasa Zoo area, this property is ideal for expats, business professionals, and families seeking a stylish and convenient lifestyle.

### Key Features

- Spacious Layout: Thoughtfully designed with a clear division between the day and night areas, ensuring privacy and functionality.
- Modern Kitchen: A fully equipped, closed kitchen includes a central heating system for added convenience.
- 3 Bedrooms, 2.5 Bathrooms:
  - Master bedroom with an en-suite bathroom.
  - Two additional bedrooms share a separate bathroom.

- Guest toilet conveniently located in the hallway.
- Private Outdoor Space: The expansive garden and terrace provide a perfect setting for relaxation, entertaining, or spending quality time with family and friends.
- Ample Storage: Plenty of storage solutions to keep your home organized.
- Parking: Includes two dedicated parking spaces, ensuring ease and security.

### **Prime Location - Iancu Nicolae - Băneasa Zoo**

Situated in one of Bucharest's most sought-after areas, you'll enjoy:

- Proximity to Top International Schools: Perfect for families with children.
- Excellent Connectivity: Quick access to the city center, Henri Coandă Airport, and major business hubs.
- Premium Amenities: Close to Băneasa Shopping City, fine dining, and serene green spaces like Băneasa Forest.

### **Perfect for Families and Professionals**

Whether you're a family seeking a comfortable and spacious home or a professional looking for a convenient yet tranquil lifestyle, this apartment checks all the boxes.

### **Outdoor Living at Its Best**

The large garden and terrace offer an exceptional space for socializing, hosting, or simply unwinding in your own private oasis.

Don't miss the chance to live in one of Bucharest's most desirable neighborhoods.

[Contact us today to schedule a viewing!](#)

### **Living in the Iancu Nicolae - Băneasa Zoo Area, North Bucharest**

The Iancu Nicolae and Băneasa Zoo area, located in the northern part of Bucharest, is one of the most prestigious and desirable residential neighborhoods in the city. Known for its upscale housing, proximity to nature, and excellent amenities, this area attracts families, expats, and professionals looking for a premium lifestyle.

### **Green Spaces and Proximity to Nature**

- Băneasa Forest: One of the main highlights of the area, offering residents access to walking trails, fresh air, and a tranquil environment ideal for outdoor activities.
- Băneasa Zoo: A family-friendly destination perfect for weekend outings and an educational experience for children.
- Quiet Streets: The area is lined with greenery, creating a serene suburban vibe away from the city's hustle and bustle.

### **Upscale Housing Options**

- Modern Residences: The area is known for its luxury villas, spacious houses, and premium apartment complexes, often featuring private gardens, pools, and high-end finishes.
- Gated Communities: Many properties are located within secure, gated neighborhoods, offering enhanced privacy and security.
- Expatriate Appeal: The area is particularly popular with expats due to its proximity to international schools and high-quality living standards.

### **Education and Family-Friendly Amenities**

- Top International Schools: The area is home to some of Bucharest's most prestigious international schools, including:
  - British School of Bucharest
  - American International School of Bucharest
  - Cambridge School of Bucharest
- Child-Friendly Facilities: Numerous parks, playgrounds, and family-oriented activities make it an

ideal choice for families with children.

### **Accessibility and Transport**

- Proximity to Bucharest City Center: The area is well-connected to the city center via the DN1 (National Road 1) and public transportation.
- Henri Coandă International Airport: Just a short drive away, making it convenient for frequent travelers.
- Business Hubs: Close to Pipera and other business districts, making it attractive for professionals working in these areas.

### **Shopping and Dining**

- Băneasa Shopping City: A premier shopping mall offering high-end fashion brands, supermarkets, a cinema, and a variety of restaurants.
- Dining Options: The area features a mix of international and Romanian cuisine, with numerous cafes, fine dining establishments, and casual eateries.

### **Community and Lifestyle**

- Exclusive Community: The Iancu Nicolae area has a close-knit, international community, with residents often participating in local events and gatherings.
- Peaceful Living: The neighborhood's tranquil environment, combined with its high-quality infrastructure, creates a premium lifestyle for its residents.

### **Who Should Live Here?**

- Families: Ideal for families due to excellent schools, safe streets, and family-friendly amenities.
- Expats: A hub for expatriates seeking a comfortable and high-standard living experience in Bucharest.
- Professionals: Proximity to business hubs and the airport makes it a practical yet luxurious choice for working professionals.





Living in the Iancu Nicolae - Băneasa Zoo area offers a unique combination of luxury, convenience, and connection to nature. It's a perfect choice for those seeking a serene and upscale lifestyle in the vibrant northern part of Bucharest.



Property details

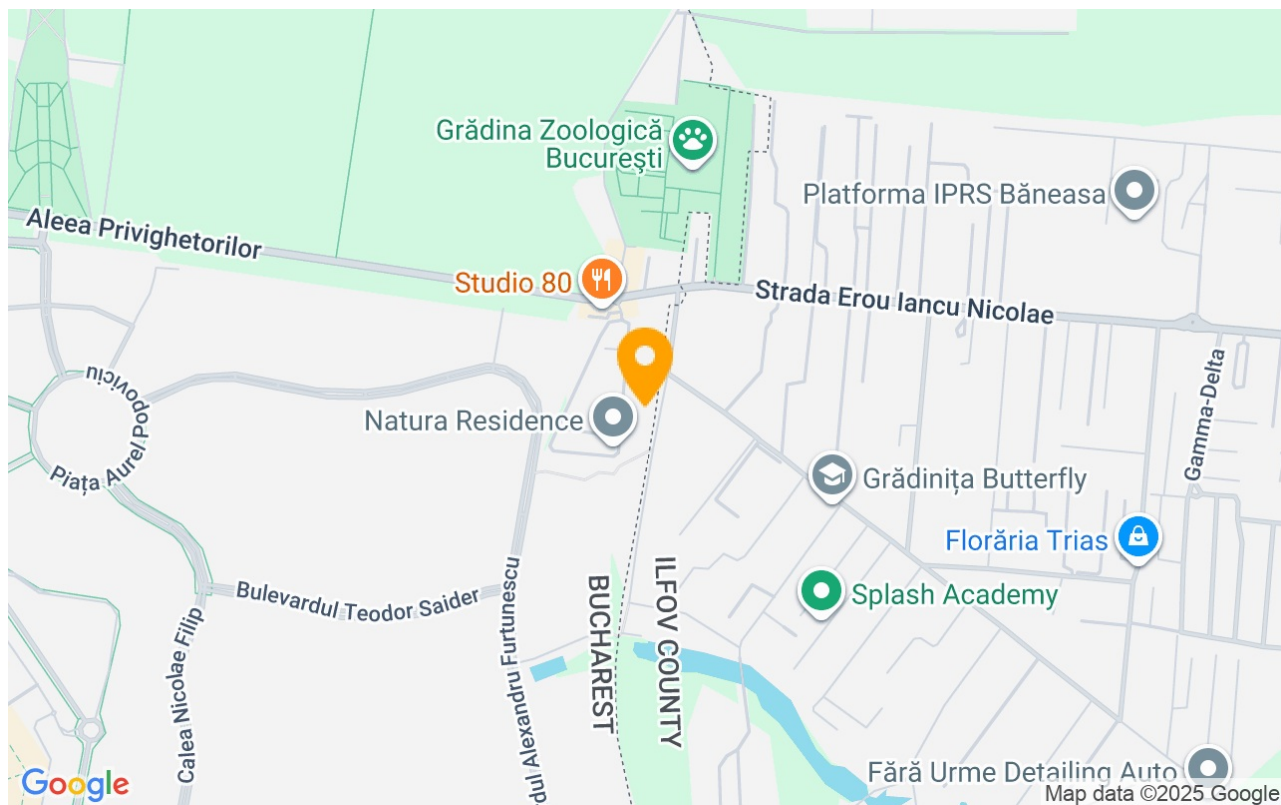
Rooms no.	4
Useable surface	99m²
Constructed surface	126m²
Apartment type	Apartment
Type of rooms	Independent
Type of comfort	Comfort 1
Bedrooms no.	3
Kitchens no.	1
Bathrooms no.	2
Toilets no.	1
Building type	Block
Year built	2020
Config	1S+P+5
Floor	Groundfloor
State	Finished
Elevator	Yes
Parking inside	1
Parking outside	1

Amenities

-  Equipped kitchen
-  Furnished ( Willing to take out )
-  Private heating
-  Air conditioning



## Location



## Photos

