



Violetta Tudorache

+40 729 005 624

contact@blissimobiliare.ro
(mailto:contact@blissimobiliare.ro)

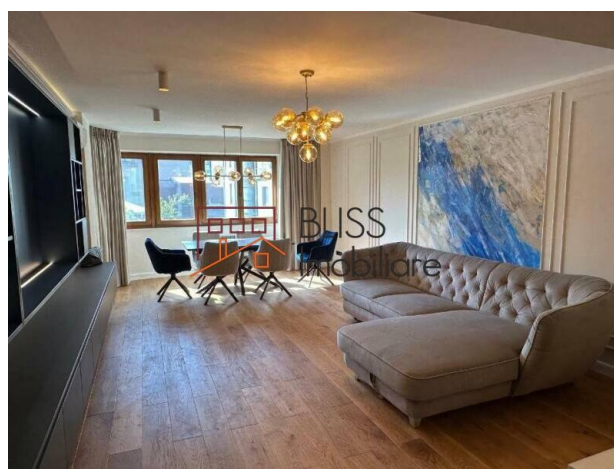
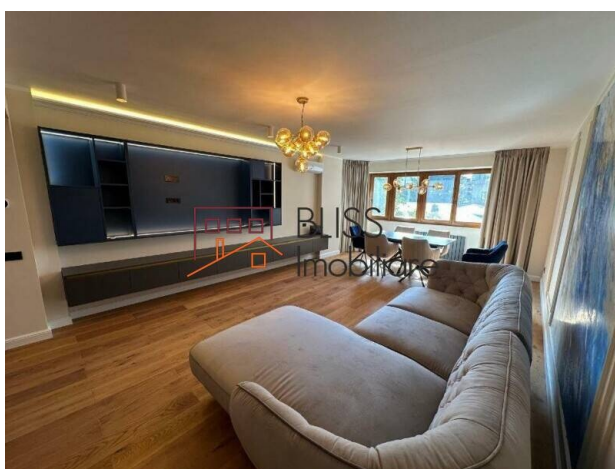
Updated on 12 December 2025

Exclusive 3-Bedroom Apartment in Aviatorilor - 155 sqm

Charles de Gaulle, Bucharest

2,600 EUR/ month

Web Reference
#142880



<https://blissimobiliare.ro/index.php/en/apartment-3-bedrooms-for-rent-dorobanti-primaverii-kiseleff-aviatorilor-bucharest-142880> (<https://blissimobiliare.ro/index.php/en/apartment-3-bedrooms-for-rent-dorobanti-primaverii-kiseleff-aviatorilor-bucharest-142880>)

Description

3-Bedroom Apartment in Charles de Gaulle / Aviatorilor - 155 sqm, Premium Finishes, Underground Parking

Prime Location – Between Herăstrău Park and Kiseleff Park

Discover an exclusive 3-bedroom apartment located in one of the most prestigious residential areas of Bucharest – Charles de Gaulle Square / Aviatorilor, just steps away from Herăstrău Park and a 10-minute walk from Kiseleff Park. A unique location, considered the zero-kilometer of residential luxury, where urban elegance blends perfectly with nature and modern comfort.

Layout and Interior Spaces

- Usable area: 155 sqm
- Extremely spacious open-space living room with dining area, TV & relaxation area, fully equipped kitchen with central island and closed pantry
- 3 large bedrooms, each with its own dressing room
- Master bedroom with King Size bed and en-suite bathroom (bathtub, shower, WC)
- 2 additional bedrooms, ideal as home office or children's rooms
- 2 additional modern bathrooms, both with walk-in showers
- Generous hallway with a large entrance area featuring a dressing and a relaxation / library / office

corner

- Balconies in all rooms, ensuring abundant natural light throughout the day

Premium Finishes and Features

- Smart heating system, with individual room temperature control through digital panels
- Gree air conditioning system with independent adjustable indoor units
- Bosch appliances: induction hob, electric oven, microwave, dishwasher
- High-quality furniture, including a King Size bed in the master bedroom
- First use – newly finished and partially furnished






Benefits and Premium Location

- 1 underground parking space included
- Boutique residential building with only 4 floors
- Quick access to Aviatorilor metro and public transportation
- Nearby: fine dining restaurants, cafés, pharmacies, banks, top schools, and kindergartens
- Herăstrău Park and Kiseleff Park just steps away – perfect for leisure and outdoor activities

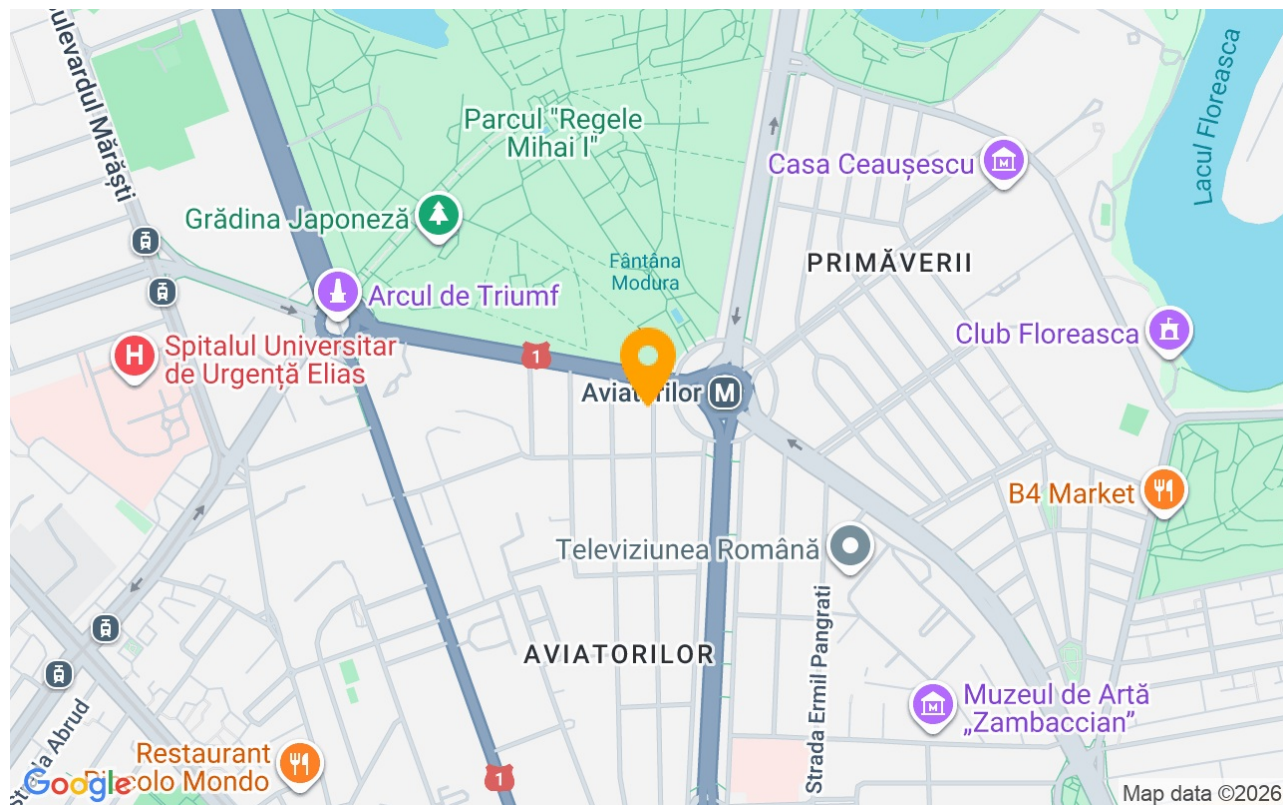
Property details

Rooms no.	4
Useable surface	155m²
Apartment type	Apartment
Type of rooms	Independent
Bedrooms no.	3
Kitchens no.	1
Bathrooms no.	3
Building type	Block
Year built	1998
Config	1S+P+4+M
Floor	3
Balconies no.	1
State	Finished
Elevator	Yes
Parking inside	1
Earthquake risk class	Unclassified

Amenities

-  Equipped kitchen
-  Dishwasher
-  Furnished
-  Private heating
-  Air conditioning

Location



Photos

