



**Violetta Tudorache**

+40 729 005 624

contact@blissimobiliare.ro  
(mailto:contact@blissimobiliare.ro)

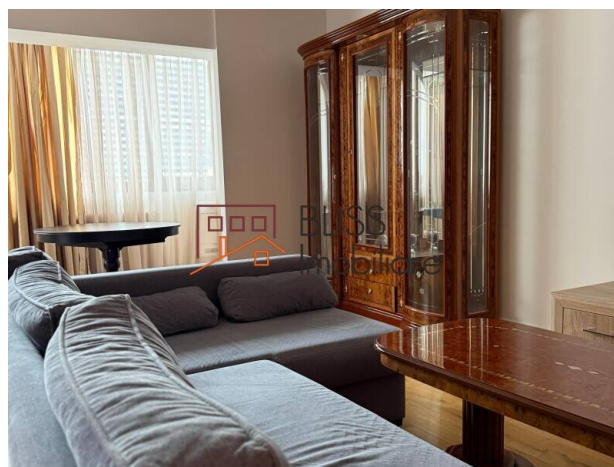
Updated on 9 December 2025

## Modern 2-Bedroom Apartment

📍 Herastrau, Bucharest

**1,400 EUR/ month**

Web Reference  
**#143270**



<https://blissimobiliare.ro/index.php/en/apartment-2-bedrooms-for-rent-herastrau-nordului-bucharest-143270> (<https://blissimobiliare.ro/index.php/en/apartment-2-bedrooms-for-rent-herastrau-nordului-bucharest-143270>)

### Description

**2- Bedroom Apartment with 3 Balconies and 2 Bathrooms - Fully Furnished and Equipped, Herăstrău Area**

## Elegant design, natural light, and proximity to Herăstrău Park

Discover a refined and welcoming apartment located in one of Bucharest's most sought-after residential areas - Herăstrău, on a quiet and green street just a few minutes' walk from Herăstrău Park. With a usable area of 90 sqm and three balconies, this elegant home perfectly combines comfort, practicality, and modern design.

### Layout & Interior Details

- Bright and spacious living room with dining area and direct balcony access
- Fully furnished kitchen equipped with high-quality appliances
- Two comfortable bedrooms, ideal for family or home office use
- Two stylish bathrooms with premium finishes
- Three balconies offering open views and natural light throughout the day
- Modern furniture and a contemporary interior design

### Features & Amenities

- Fully furnished and equipped
- Air conditioning
- Large windows ensuring plenty of daylight
- Modern, well-maintained building with secure access
- Located on the 2nd floor of a 9-level residential building

### **Prime Location - Herăstrău / Nordului**

Set in a prestigious and quiet area, just steps away from Herăstrău Park, this apartment offers both tranquility and quick access to the city's best amenities:





- Fine dining restaurants and trendy cafés
- Promenada Mall, World Class fitness center, Stejarii Country Club
- Top private schools and kindergartens
- Easy access to DN1, Otopeni Airport, and the Pipera-Barbu Văcărescu business hub



Property details

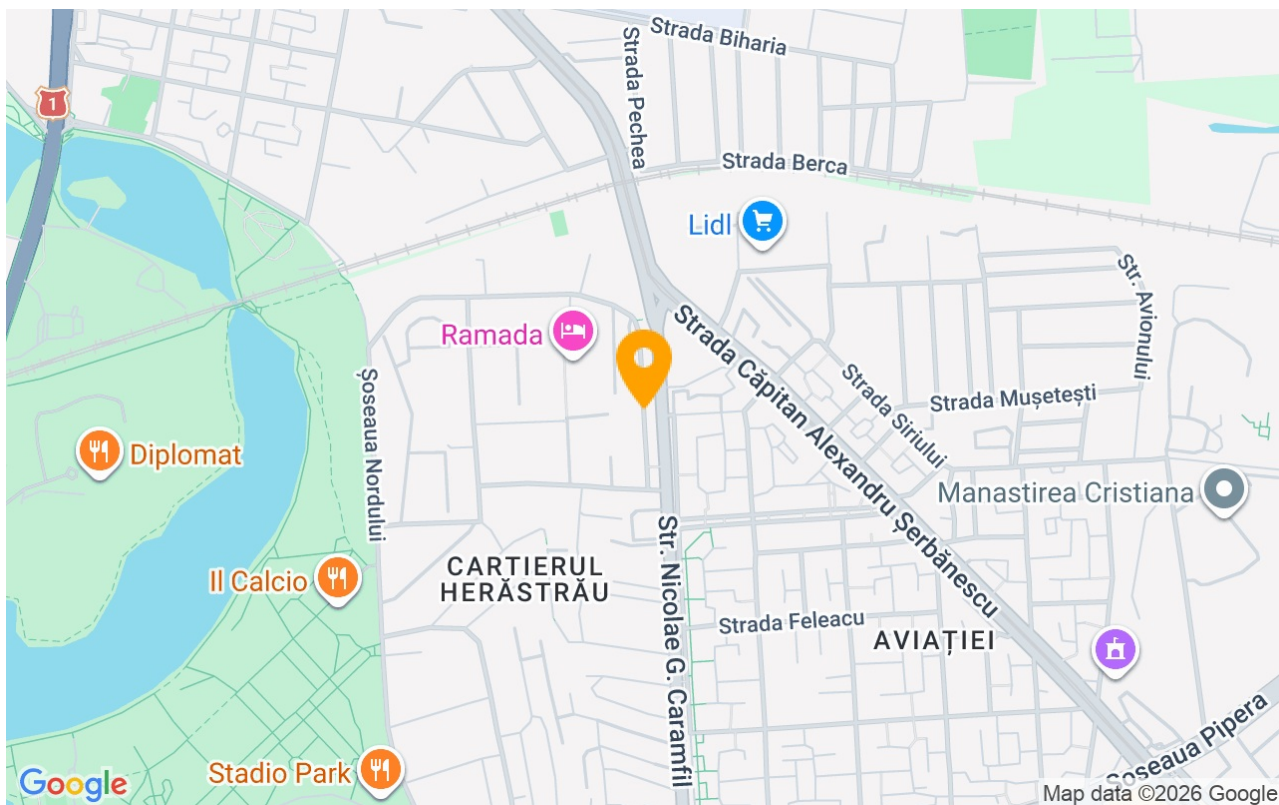
Rooms no.	3
Useable surface	90m²
Constructed surface	109m²
Apartment type	Apartment
Type of rooms	Semi-independent
Bedrooms no.	2
Kitchens no.	1
Bathrooms no.	2
Building type	Block
Year built	2017
Config	1S+P+9
Floor	2
Balconies no.	3
State	Finished
Elevator	Yes
Earthquake risk class	Unclassified

Amenities

-  Equipped kitchen
-  Furnished
-  Suitable for office
-  Air conditioning



## Location



## Photos

