



**Violetta Tudorache**

+40 729 005 624

contact@blissimobiliare.ro  
(mailto:contact@blissimobiliare.ro)

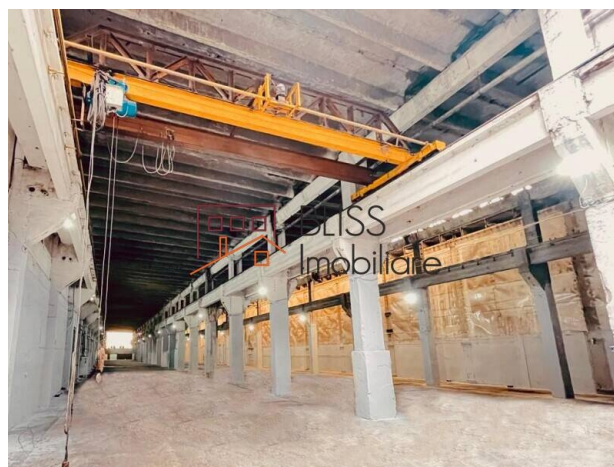
Updated on 21 February 2026

## office space

Progresul, Bucharest / Ilfov

**550 EUR/ month**

Web Reference  
**#143574**



<https://blissimobiliare.ro/index.php/en/office-space-for-rent-progresul-bucharest-ilfov-143574>  
(<https://blissimobiliare.ro/index.php/en/office-space-for-rent-progresul-bucharest-ilfov-143574>)

## Description

### 85 sqm office space - 1st floor, Șoseaua Giurgiului, Jilava

This office space is located on Șoseaua Giurgiului in Jilava, within a recently renovated modern building offering easy access to Bucharest and the Ring Road.

With a total area of 85 sqm on the 1st floor, the space benefits from large windows, abundant natural light, modern finishes, and air conditioning.

The layout is open-space, allowing flexible partitioning to suit business needs.

Parking is available in front of the building.

### Key features:

- Total area: 85 sqm (1st floor)
- Renovated building with modern façade
- Bright, open layout with large windows
- Air conditioning and private restroom
- Easy access to main road connections
- On-site parking




This property is ideal for small businesses, consultancy firms, creative studios, or administrative offices, offering a comfortable and accessible workspace in southern Bucharest.



Property details

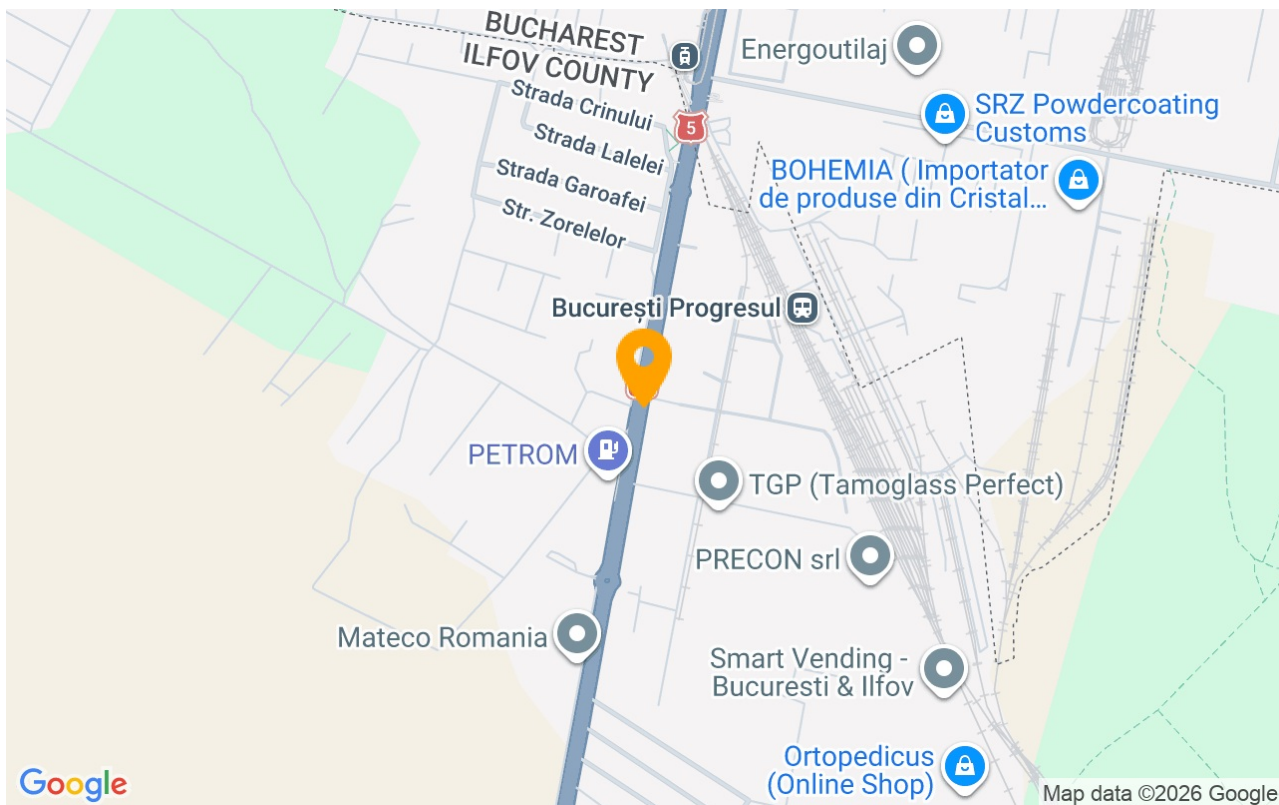
Constructed surface	85m²
Building type	Block
State	Finished

Amenities

-  Not furnished
-  Building heating
-  Suitable for office



## Location



## Photos

