



Violetta Tudorache

+40 729 005 624

contact@blissimobiliare.ro
(mailto:contact@blissimobiliare.ro)

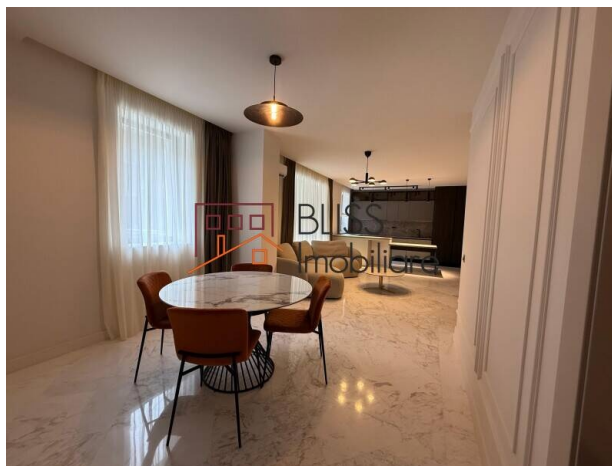
Updated on 31 March 2026

2-bedroom apartment with 2 generous terraces and pool access

2,500 EUR +VAT / month

Web Reference
#145358

ARQA Jolie Village, Iancu Nicolae Jolie Ville ,
Bucharest / Ilfov



<https://blissimobiliare.ro/index.php/en/apartment-2-bedrooms-for-rent-iancu-nicolae-pipera-bucharest-ilfov-145358> (<https://blissimobiliare.ro/index.php/en/apartment-2-bedrooms-for-rent-iancu-nicolae-pipera-bucharest-ilfov-145358>)

Description

A 2-bedroom apartment with generous living space, direct exterior access, and a finishing standard that reflects the quality of the development it belongs to. A well-considered choice for those who prioritize space, practicality, and quality of life in northern Bucharest. Completed in 2026 and delivered fully furnished and equipped, this apartment is ready for immediate occupancy.

Ground-floor unit with spacious terraces in Iancu Nicolae - Pipera

Property details:

- Usable area: 102 sqm
- Built area: 138 sqm
- Rooms: 2 bedrooms + living room
- Bathrooms: 3
- Terraces: 2, total surface area 36.3 sqm
- Floor: Ground floor
- Building regime: B+G+4

- Year of construction: 2026
- Layout: Semi-open plan
- Parking: 2 indoor spaces
- Lift: Yes

Interior and functionality:

The spacious living area features an integrated dining zone with direct terrace access. Both bedrooms include their own walk-in wardrobes, providing well-structured storage. The separate kitchen is fully equipped, including a dishwasher. Existing furnishings deliver immediate comfort with no additional setup required.

Apartment amenities:

- Fully equipped kitchen
- Dishwasher
- Fully furnished
- Air conditioning
- Rehau underfloor heating with wireless thermostat
- Centralized mechanical ventilation
- Kone lift
- 2 indoor parking spaces

Shared complex amenities:

- Outdoor swimming pool
- Zen Garden
- Lounge with Chesterfield seating
- Co-working area
- Children's playground
- Private gardens and pedestrian walkways
- Exclusive lobby
- Security and concierge

About the development:

The apartment is part of a completed luxury residential development in the Erou Iancu Nicolae area, built on a plot of 8,000 sqm with fully underground parking (190 spaces). The reinforced concrete structure with a 1m raft foundation, ventilated basalt wool facade, and energy class A certification reflect the construction standards upheld throughout the project. Finishes include Reynaers joinery, Pinum doors, Villeroy & Boch and Porcelanosa sanitary ware, Hansgrohe/Grohe fixtures, natural oak parquet, and Porcelanosa ceramic tiles. Access is controlled via intercom with tag, face ID, or fingerprint, with a dedicated remote for the underground garage.

About the developer:

The development is built by PEDRO Construct, one of the most experienced developers in the Romanian real estate market, active for over 30 years. Their portfolio includes thousands of delivered residential units and hundreds of thousands of square metres constructed both as developer and general contractor. Key projects: Nusco City, Cloud 9 Residence, Residence 19, Residence 20, Residence 21, Exigent One.

Location:

The property is situated in Iancu Nicolae - Pipera, one of the most established residential corridors in northern Bucharest. Cambridge School of Bucharest is 350m away, Jolie Ville Galeria 400m, and Revive Health 260m. The area offers easy access to central Bucharest and Henri Coandă International Airport Otopeni (9.6 km) via the main northern arteries. A bus stop serving routes 301, 450, and 473 is 250m from the building. The zone is consistently preferred by expatriates and professional families for its concentration of international schools, green spaces, and commercial facilities.

A 2026-completed property, fully furnished, with 36.3 sqm of outdoor space and pool access — available for immediate occupancy.

FAQ

1. What is the total terrace area and how are the terraces accessed?

The apartment has two terraces with a combined surface area of 36.3 sqm, both accessed from inside. The ground-floor positioning provides direct, convenient access to the outdoor spaces and the complex's gardens.

2. Is the apartment fully furnished and equipped?

Yes. The property is delivered fully furnished and equipped, including a fully fitted kitchen with dishwasher, air conditioning, and furniture throughout — including a walk-in wardrobe in each bedroom. Ready for immediate occupation with no additional setup required.

3. What is the heating system?

The apartment features Rehau underfloor heating supplied by the building's central boiler system with individual metering per unit, and a wireless thermostat for independent temperature control. The building also has centralized mechanical ventilation. The air conditioning unit is an apartment-level addition installed in this specific unit.

4. How many parking spaces are included and where are they located?

The apartment includes 2 spaces in the building's fully underground parking facility (190 spaces total), accessed via a dedicated remote control.

5. Who is the developer and what guarantees the construction quality?


The development is built by PEDRO Construct, with over 30 years of experience in the Romanian market and projects such as Nusco City and Cloud 9 Residence in their portfolio. Construction features a reinforced concrete structure with a 1m general raft foundation, ventilated basalt wool facade, and energy class A certification.

Property details


Rooms no.	3
Useable surface	102m ²
Constructed surface	138m ²
Apartment type	Apartment
Type of rooms	Semi-independent
Type of comfort	Comfort 1
Bedrooms no.	2
Kitchens no.	1
Bathrooms no.	3
Building type	Block
Year built	2026
Config	1S+P+4
Floor	Groundfloor
Balconies no.	2
State	Finished
Elevator	Yes
Parking inside	2
From developer	No

Amenities


 Equipped kitchen

 Dishwasher

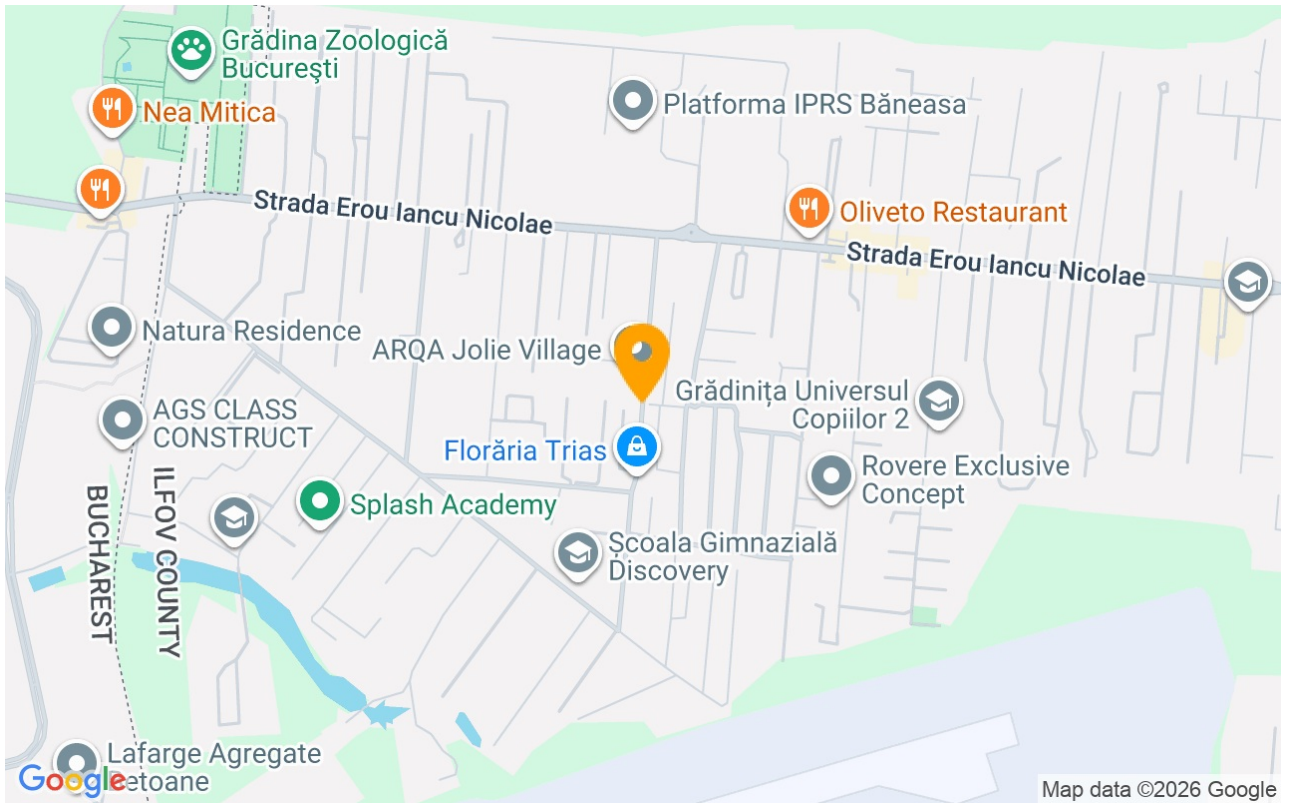
 Furnished

 Building heating

 Air conditioning

 Swimming pool

Location



Photos

