



**Violetta Tudorache**

+40 729 005 624

contact@blissimobiliare.ro  
(mailto:contact@blissimobiliare.ro)

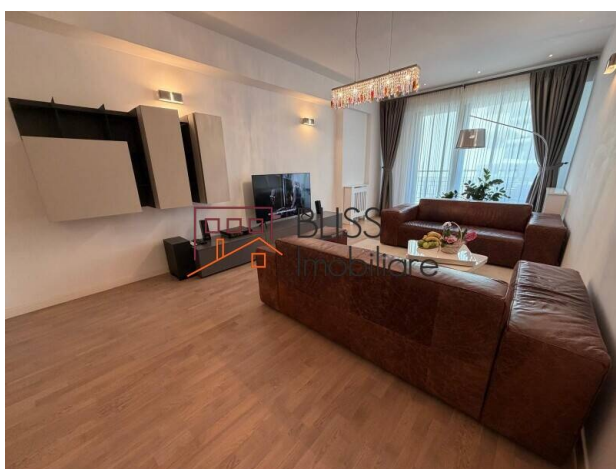
Updated on 27 April 2026

## Elegant 2-Bedroom Apartment Steps from Herăstrău Park

**1,500 EUR/ month**

Web Reference  
**#145421**

 Lighthouse Residence, Herastrau, Bucharest



<https://blissimobiliare.ro/index.php/en/apartment-2-bedrooms-for-rent-herastrau-nordului-bucharest-145421> (<https://blissimobiliare.ro/index.php/en/apartment-2-bedrooms-for-rent-herastrau-nordului-bucharest-145421>)

### Description

**Modern 2-Bedroom Apartment in Lighthouse Residence - Premium Living Near Herastrau Park**

## Secure Living with Underground Parking in Herastrau

We present a sophisticated 2-bedroom apartment located in the prestigious Lighthouse Residence, a benchmark for high-quality residential standards in Northern Bucharest. Situated on the 3rd floor of a building completed in 2018, this property offers the perfect blend of contemporary design, generous space, and proximity to nature.

### Sophisticated Interior and Modern Layout

The apartment is designed to provide a premium living experience, featuring high-end finishes and exceptional natural light:

**Size & Layout:** With a usable area of 90 sqm, the apartment features a spacious living room and 2 well-proportioned bedrooms, ensuring privacy and comfort for all residents.

- **Living Area:** An open, airy space furnished with modern pieces, serving as the heart of the home.
- **Balcony:** A private outdoor space, perfect for quiet relaxation in a serene environment.
- **Bathrooms:** The residence benefits from 2 fully equipped bathrooms, finished with high-quality

materials.

- Condition: Offered fully furnished and modernly equipped, this is a "turn-key" property ready for immediate move-in.

### **Premium Amenities and Technical Excellence**

- Parking: The apartment benefits from 1 included underground parking space, a vital asset in the high-demand Herastrau area.
- Appliances: Fully functional kitchen with a dishwasher, high-performance air conditioning, and secured building access.
- Building Features: Modern 2S+G+6 structure with elevator access, video surveillance, and impeccably maintained common areas.

### **Location: Exclusive Lifestyle in North Bucharest**

Lighthouse Residence provides immediate access to the best the Herastrau neighborhood has to offer:

- Nature: Just a short walk away from Herastrau Park, the perfect spot for outdoor activities.
- Lifestyle: Proximity to the most renowned restaurants, gourmet coffee shops, and exclusive clubs on Nordului Road.
- Connectivity: Easy access to the Pipera-Aviatiei business hub and the city center.



## Property details

<b>Rooms no.</b>	3
<b>Useable surface</b>	90m <sup>2</sup>
<b>Apartment type</b>	Apartment
<b>Type of rooms</b>	Semi-independent
<b>Bedrooms no.</b>	2
<b>Kitchens no.</b>	1
<b>Bathrooms no.</b>	2
<b>Building type</b>	Block
<b>Year built</b>	2018
<b>Config</b>	2S+P+6
<b>Floor</b>	3
<b>Balconies no.</b>	1
<b>State</b>	Finished
<b>Elevator</b>	Yes
<b>Parking inside</b>	1

## Amenities

 Equipped kitchen

 Dishwasher

 Furnished

 Air conditioning



## Location



## Photos

