



**Violetta Tudorache**

+40 729 005 624

contact@blissimobiliare.ro  
(mailto:contact@blissimobiliare.ro)

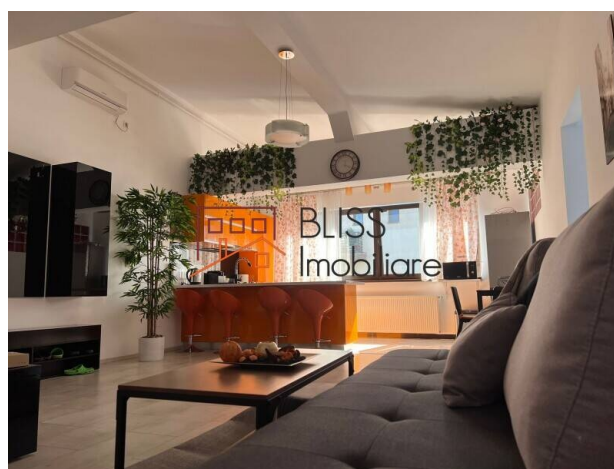
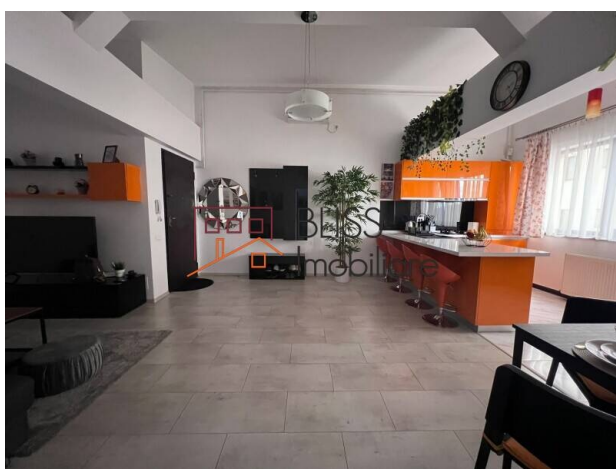
Updated on 23 April 2026

## Bright 1-Bedroom Apartment with Open-Plan Living

**165,000 EUR**

Web Reference  
**#145485**

 Petrom City, Bucharest



<https://blissimobiliare.ro/index.php/en/apartment-1-bedroom-for-sale-baneasa-sisesti-jandarmerie-straulesti-sector-1-bucharest-145485> (<https://blissimobiliare.ro/index.php/en/apartment-1-bedroom-for-sale-baneasa-sisesti-jandarmerie-straulesti-sector-1-bucharest-145485>)

### Description

This 1-bedroom apartment offers an airy living experience shaped by notable ceiling height and an open-plan living and kitchen area suited to comfortable city living. The 81 sqm of usable space are efficiently arranged and include a well-sized bedroom with a 180 cm double bed, two spacious wardrobes and extra room for a desk or baby cot. The bathroom stands out through both scale and functionality, featuring a walk-in shower, bathtub and double sinks. Set on the top floor of a 2014 building, the property also includes a balcony, equipped kitchen, furnishings, air conditioning and one outdoor parking space. Its position in northern Bucharest, close to Herăstrău Park, Băneasa Shopping City, Lidl and bus links towards Piața Romană and Pipera, adds everyday convenience and a strong lifestyle component.

## Generous bathroom, balcony and practical city access

For more details and similar options, contact the BLISS Imobiliare team.



## Property details

<b>Rooms no.</b>	2
<b>Useable surface</b>	81m <sup>2</sup>
<b>Apartment type</b>	Apartment
<b>Type of comfort</b>	Comfort 1
<b>Bedrooms no.</b>	1
<b>Kitchens no.</b>	1
<b>Bathrooms no.</b>	1
<b>Building type</b>	Block
<b>Year built</b>	2014
<b>Config</b>	P+4
<b>Floor</b>	4
<b>Balconies no.</b>	1
<b>Elevator</b>	No
<b>Parking outside</b>	1
<b>Earthquake risk class</b>	Unclassified

## Amenities

 Equipped kitchen

 Furnished

 Building heating

 Air conditioning



## Location



## Photos

