



**Violetta Tudorache**

+40 729 005 624

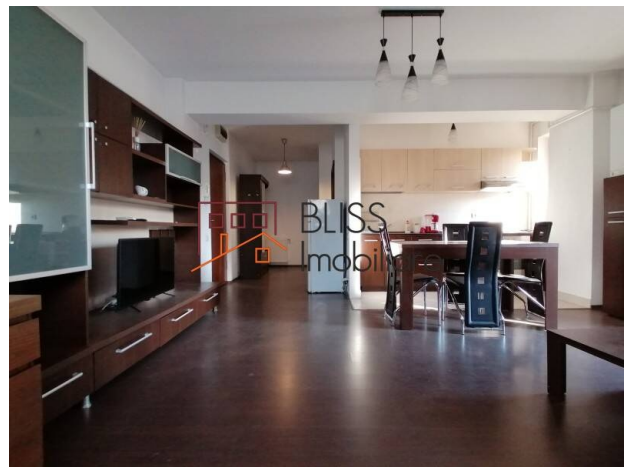
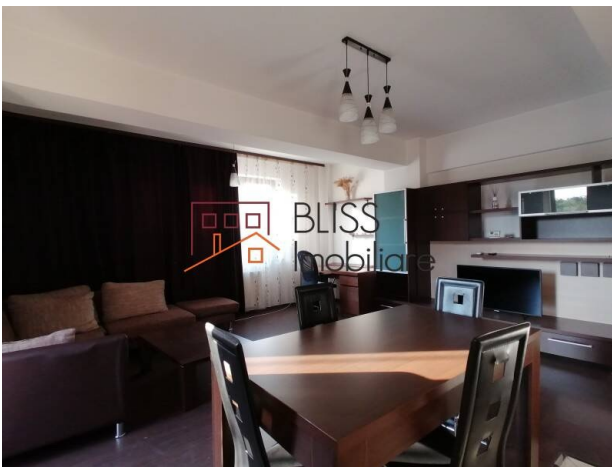
contact@blissimobiliare.ro  
(mailto:contact@blissimobiliare.ro)

Updated on 24 February 2025

## Spacious one-bedroom apartment Baneasa area

Web Reference  
**#19601**

 Baneasa Garlei, Bucharest



<https://blissimobiliare.ro/index.php/en/apartment-1-bedroom-for-rent-baneasa-sisesti-jandarmerie-straulesti-sector-1-bucharest-19601> (<https://blissimobiliare.ro/index.php/en/apartment-1-bedroom-for-rent-baneasa-sisesti-jandarmerie-straulesti-sector-1-bucharest-19601>)

### Description

We present a spacious 1-bedroom apartment located in a premium location in the Baneasa neighborhood. In the area there is Baneasa Lake, Herastrau Park, Baneasa Shopping City, etc., and everything that matters to you and your comfort.

## Located near Baneasa Lake, Herastrau Park, Baneasa Shopping City

The apartment features a usable area of 70 square meters, and has the following layout: open-space living-room with dining area, open kitchen, bedroom, bathroom with shower, balcony.

Located on the 1st floor, in an BS+4E+M building built in 2012, the apartment has a modern design, with a chic but comfortable air, in a safe and green area.

The apartment is fully furnished and modernly equipped, with absolutely everything you need. The heating and cooling of the apartment is done through apartment central heating and air conditioning units.

Among the facilities there is also a parking space included in the underground parking of the building, but also a storage box.

The area is very quiet, rich in green spaces, near which we find educational centers, pharmacies, supermarkets and Baneasa Shopping City.

There is quick access to the area and Herastrau Park, where you can enjoy not only a quiet promenade, surrounded by greenery, but also a glass of wine at one of the many terraces, restaurants, cafes, famous for their exclusivity.

Regarding the means of public transport, in the vicinity there is the Aurel Vlaicu metro station, with the M2 highway, but also the bus stations that surround the city.




## Property details


<b>Rooms no.</b>	2
<b>Useable surface</b>	70m <sup>2</sup>
<b>Constructed surface</b>	82m <sup>2</sup>
<b>Apartment type</b>	Apartment
<b>Type of rooms</b>	Independent
<b>Type of comfort</b>	Comfort 1
<b>Bedrooms no.</b>	1
<b>Kitchens no.</b>	1
<b>Bathrooms no.</b>	1
<b>Building type</b>	Block
<b>Year built</b>	2012
<b>Config</b>	1S+P+4+M
<b>Floor</b>	1
<b>Balconies no.</b>	1
<b>State</b>	Finished
<b>Elevator</b>	Yes
<b>Parking inside</b>	1
<b>Storage no.</b>	1
<b>Earthquake risk class</b>	Unclassified
<b>Average cost of utilities per month</b>	50.00 EUR


## Amenities

 Equipped kitchen

 Furnished

 Private heating

 Air conditioning

 Swimming pool



## Location



## Photos

