



Violetta Tudorache

+40 729 005 624

contact@blissimobiliare.ro
(mailto:contact@blissimobiliare.ro)

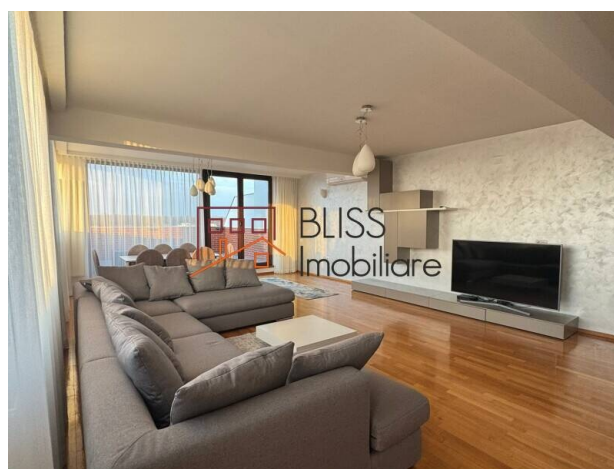
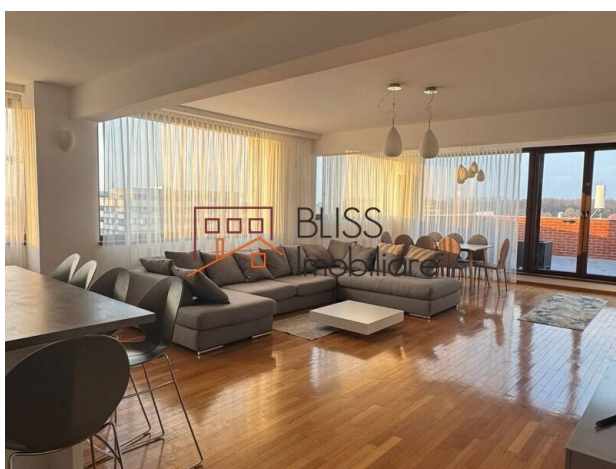
Updated on 8 April 2025

3 bedroom penthouse apartment

Vatra Noua, Bucharest

1,800 EUR/ month

Web Reference
#29228



<https://blissimobiliare.ro/index.php/en/apartment-penthouse-3-bedrooms-for-rent-baneasa-sisesti-jandarmerie-straulesti-sector-1-bucharest-29228> (<https://blissimobiliare.ro/index.php/en/apartment-penthouse-3-bedrooms-for-rent-baneasa-sisesti-jandarmerie-straulesti-sector-1-bucharest-29228>)

Description

Modern Apartment with Premium Features and Stunning Views

This spacious 170m² apartment offers an exceptional living experience with a thoughtfully designed layout:

- Open-plan living and kitchen area: 60m²
- Master bedroom: 20m²
- Bedroom 2: 15m²
- Bedroom 3: 18m²
- Bathrooms: 2 full bathrooms + 1 guest WC
- Terrace: 27m², perfect for relaxing or entertaining
- Additional spaces: Dressing room, hallways
- Parking: 3 spaces (2 in a secure garage + 1 exterior).

Located in a closed residential complex with spacious hallways, video surveillance, and top-notch security.

Premium features include:

- Luxury Rovere furniture
- Whirlpool AC

- Vaillant central heating system
- Electric blinds for windows
- Fully equipped kitchen with dishwasher and washing machine






Views: Enjoy breathtaking views of Stejarii Forest and Grivița Lake.

A true blend of comfort, style, and tranquility!

Property details

Rooms no.	4
Useable surface	170m²
Constructed surface	192m²
Apartment type	Penthouse apartment
Type of rooms	Independent
Type of comfort	Comfort 1
Bedrooms no.	3
Kitchens no.	1
Bathrooms no.	3
Building type	Block
Year built	2014
Config	1S+P+5
Floor	5
Balconies no.	1
State	Finished
Elevator	Yes
Parking inside	2
Parking outside	1

Amenities

-  Equipped kitchen
-  Dishwasher
-  Furnished
-  Private heating
-  Air conditioning

Location



Photos

