



Violetta Tudorache

+40 729 005 624

contact@blissimobiliare.ro
(mailto:contact@blissimobiliare.ro)

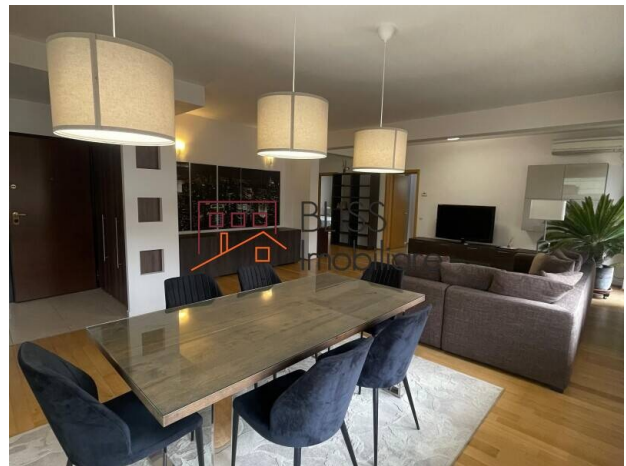
Updated on 11 February 2026

Luxurious and spacious 3 bedroom Apartment in Herastrau area

Herastrau, Bucharest

2,800 EUR/ month

Web Reference
#35558



<https://blissimobiliare.ro/index.php/en/apartment-3-bedrooms-for-rent-herastrau-nordului-bucharest-35558> (<https://blissimobiliare.ro/index.php/en/apartment-3-bedrooms-for-rent-herastrau-nordului-bucharest-35558>)

Description

Spacious 3-Bedroom Apartment in Herăstrău - 180 sqm Usable, 2 Parking Spaces, Elevator, Fully Furnished & Equipped

Near Herastrau park and Aurel Vlaicu metro station

We are pleased to present a luxurious 3-bedroom apartment, located in one of Bucharest's most exclusive residential areas, just moments from Herăstrău Park. The property is situated on the 3rd (top) floor of a P+3 building completed in 2005, featuring an elevator, generous spaces, abundant natural light, and a refined lifestyle close to the park.

With a usable area of 180 sqm, the apartment is ideal for families or residents looking for true comfort, large rooms, and a practical layout.

Layout & Features

Spacious living room with a lounge area and dedicated dining space;

- 3 well-proportioned bedrooms;
- Separate fully fitted and equipped kitchen, including a dishwasher;

- 2 bathrooms;
- 1 balcony.

Comfort & Benefits

- Individual heating system and air conditioning, for year-round comfort;
- 2 outdoor parking spaces available;
- The apartment is delivered fully furnished and modernly equipped.

Prime Location - Herăstrău / Nordului

The apartment is positioned in one of Bucharest's most desirable residential areas, right next to Herăstrău Park. The location offers a complete lifestyle: outdoor activities in the park, premium restaurants and cafés, and quick access to key points of interest in the area.

Nearby you will find:

- Herăstrău Park and its promenade;
- Premium restaurants and terraces in the Nordului / Herăstrău area;
- Promenada Mall and the main office hubs (Pipera-Floreasca);
- Fast connections to Aurel Vlaicu metro station, DN1 and the airport.

Property details

Rooms no.	4
Useable surface	180m ²
Constructed surface	200m ²
Apartment type	Apartment
Type of rooms	Semi-independent
Type of comfort	Comfort 1
Bedrooms no.	3
Kitchens no.	1
Bathrooms no.	2
Building type	Block
Year built	2005
Config	P+3
Floor	3
Balconies no.	1
State	Finished
Elevator	Yes
Parking outside	2
Earthquake risk class	Unclassified

Amenities

 Equipped kitchen

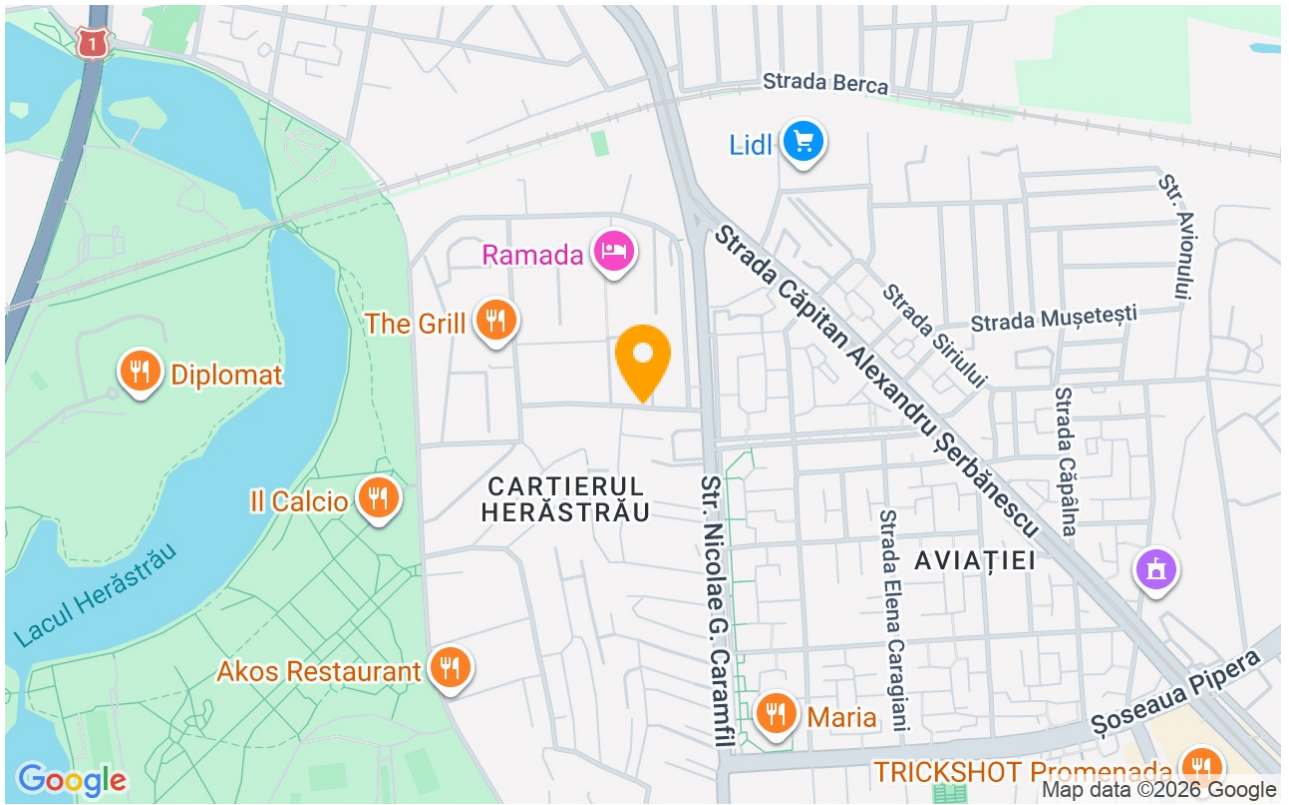
 Dishwasher

 Furnished

 Private heating

 Air conditioning

Location



Photos

