



**Violetta Tudorache**

+40 729 005 624

contact@blissimobiliare.ro  
(mailto:contact@blissimobiliare.ro)

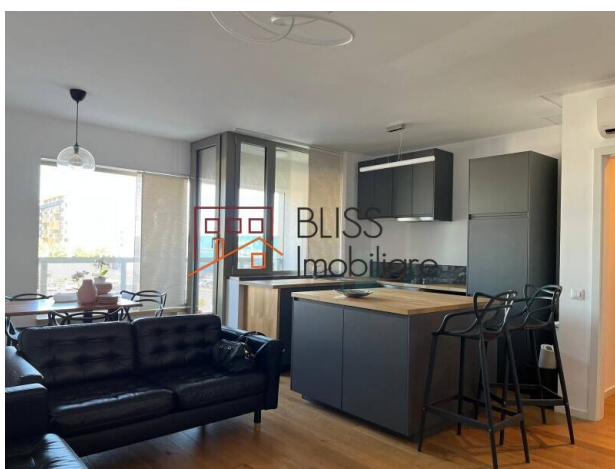
Updated on 10 September 2025

## Modern 1-Bedroom Apartment in Aviației Park - 55 sqm

Aviației Park, Aviației Nord, Bucharest

**1,050 EUR/ month**

Web Reference  
**#73098**



<https://blissimobiliare.ro/index.php/en/apartment-2-rooms-for-rent-aviatiei-promenada-mall-metro-pipera-bucharest-73098> (<https://blissimobiliare.ro/index.php/en/apartment-2-rooms-for-rent-aviatiei-promenada-mall-metro-pipera-bucharest-73098>)

### Description

**1-Bedroom Apartment in Aviației Park - 55 sqm, 2 Bathrooms, Modernly Furnished, Underground Parking Included**

## Exclusive Location – Near Herăstrău Park & Promenada Mall

Experience elegance and comfort in this 2-bedroom apartment, located on the 2nd floor of the prestigious Aviației Park residential complex – one of the most sought-after areas in the northern part of Bucharest. With a usable area of 55 sqm, this home stands out through high-quality finishes, efficient layout, and a modern design, fully furnished and equipped.

### Smart Layout and Premium Features

- Spacious and bright living room with relaxation area and balcony access
- Comfortable bedroom with modern furniture
- Fully equipped and furnished separate kitchen
- 2 elegant bathrooms with high-quality finishes
- Balcony with open view

### Facilities and Benefits

- 1 underground parking space included in the price
- Modern building with high-quality common areas and fast elevators
- Premium residential complex with controlled access and 24/7 security
- Quiet area, yet perfectly connected to the city

**Prime Location - Aviației / North Bucharest**

Enjoy the benefits of one of the city's most exclusive neighborhoods, with quick access to:

- Herăstrău Park and green recreational areas
- Promenada Mall, restaurants, cafés, and fitness clubs
- Business hubs in Barbu Văcărescu – Pipera
- Aurel Vlaicu metro station and public transport



Property details

Rooms no.	2
Useable surface	55m²
Constructed surface	60m²
Apartment type	Apartment
Type of rooms	Independent
Type of comfort	Comfort 1
Kitchens no.	1
Bathrooms no.	2
Building type	Block
Year built	2022
Config	1S+P+10
Floor	2
Balconies no.	1
State	Finished
Elevator	Yes
Parking inside	1

Amenities



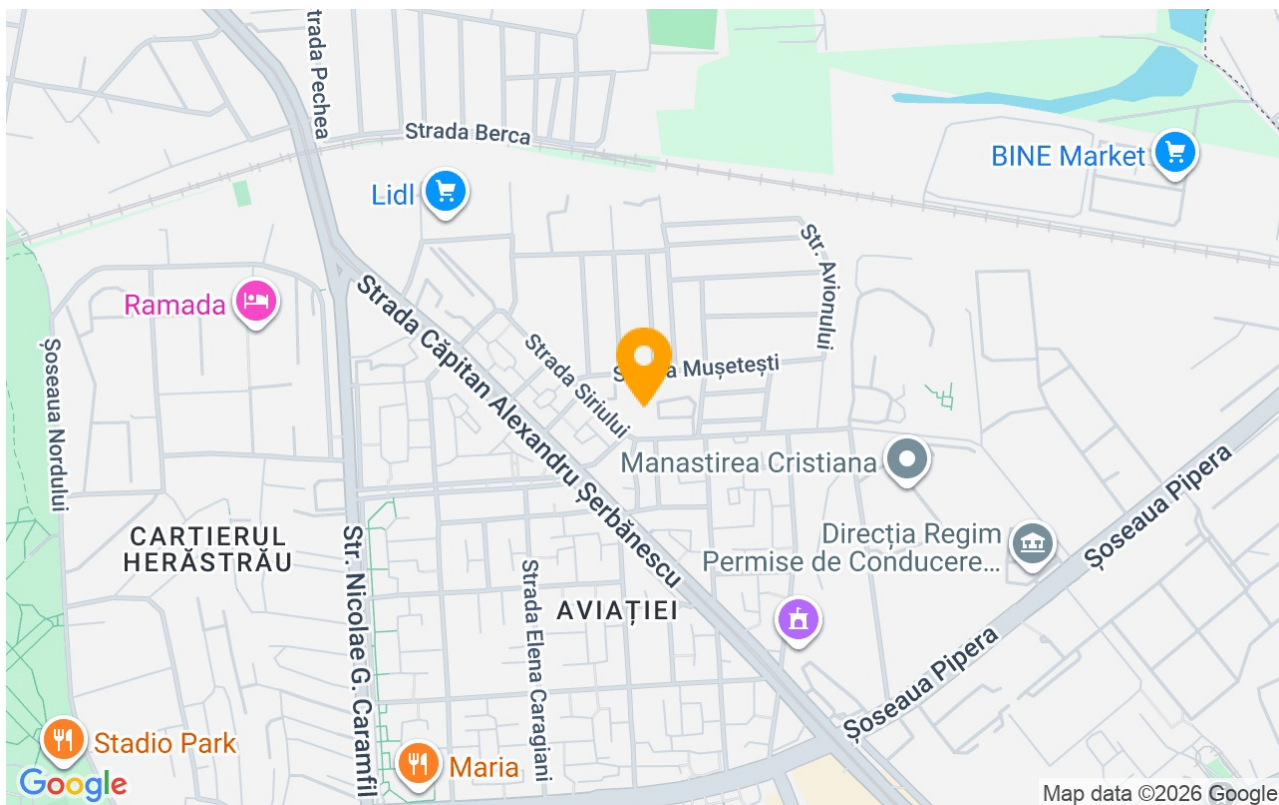
Equipped kitchen



Furnished



## Location



## Photos

