



Violetta Tudorache


+40 729 005 624

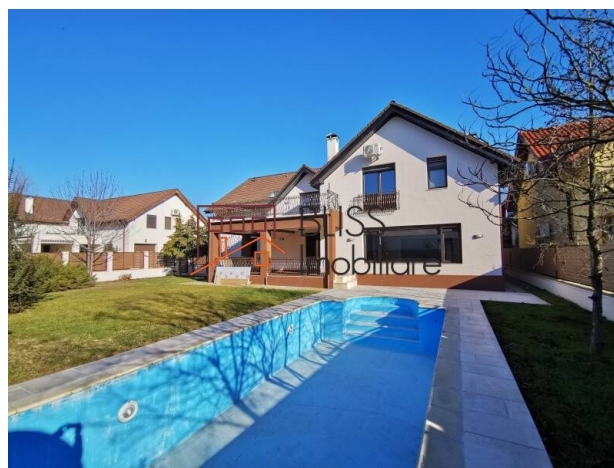
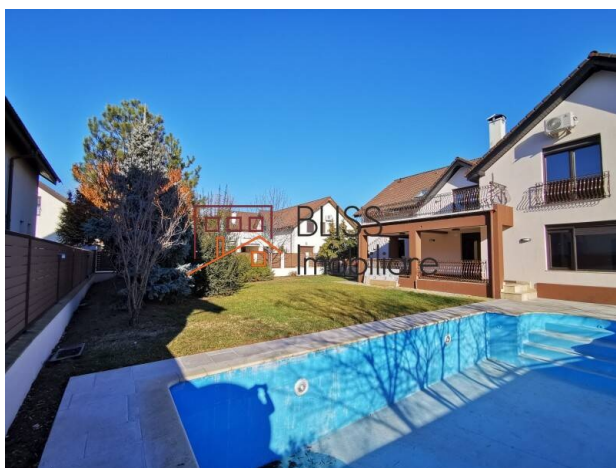
contact@blissimobiliare.ro
(mailto:contact@blissimobiliare.ro)

Updated on 4 June 2026

6 bedroom villa with swimming pool located on a plot of 700 sqm

Web Reference
#81746

 Gama Delta Impact, Iancu Nicolae Jolie Ville ,
Bucharest / Ilfov



<https://blissimobiliare.ro/index.php/en/villa-6-bedrooms-for-rent-iancu-nicolae-pipera-bucharest-ilfov-81746> (<https://blissimobiliare.ro/index.php/en/villa-6-bedrooms-for-rent-iancu-nicolae-pipera-bucharest-ilfov-81746>)

Description

Beautiful 4 bedroom villa completed in 2005, located in a small complex of 6 villas that is part of a much larger complex, in the area of Iancu Nicolae, Pipera.

Just 3 minutes walk from the bus station, direct connection to the Pipera metro.

The villa has a usable area of 480 sqm and is placed on a generous plot of 700 sqm.

The ground floor consists of a spacious and bright living room with a separate dining area, which can also be used as an office, a modern fully equipped kitchen, a double garage, a laundry room, a utility room and a bathroom.

On the first floor we find 4 bedrooms, two of which have their own bathroom and another 2 bedrooms that share a bathroom.

The whole package is completed by the basement, which has been converted into a very nice bar entertainment area. This could be a perfect "man cave" for men who need a space to themselves.

Outside, the villa benefits from a beautifully landscaped garden of 500 sqm with a swimming pool. The perfect area to spend quality time with family and friends.

It is excellently positioned, near the Jolie Ville mall, in close proximity to international schools (Cambridge School of Bucharest, British School of Bucharest), restaurants and shops in the area, 8 minutes by car from Baneasa Shopping City.

Property details

Rooms no.	7
Useable surface	480m ²
Constructed surface	550m ²
Bedrooms no.	6
Kitchens no.	1
Bathrooms no.	4
Building type	Villa
Year built	2005
Year renovated	2019
Balconies no.	2
State	Finished
Total land	700m ²
Print	200m ²
Courtyard	500m ²
Parking inside	2
Parking outside	2

Amenities

 Equipped kitchen

 Dishwasher

 Not furnished

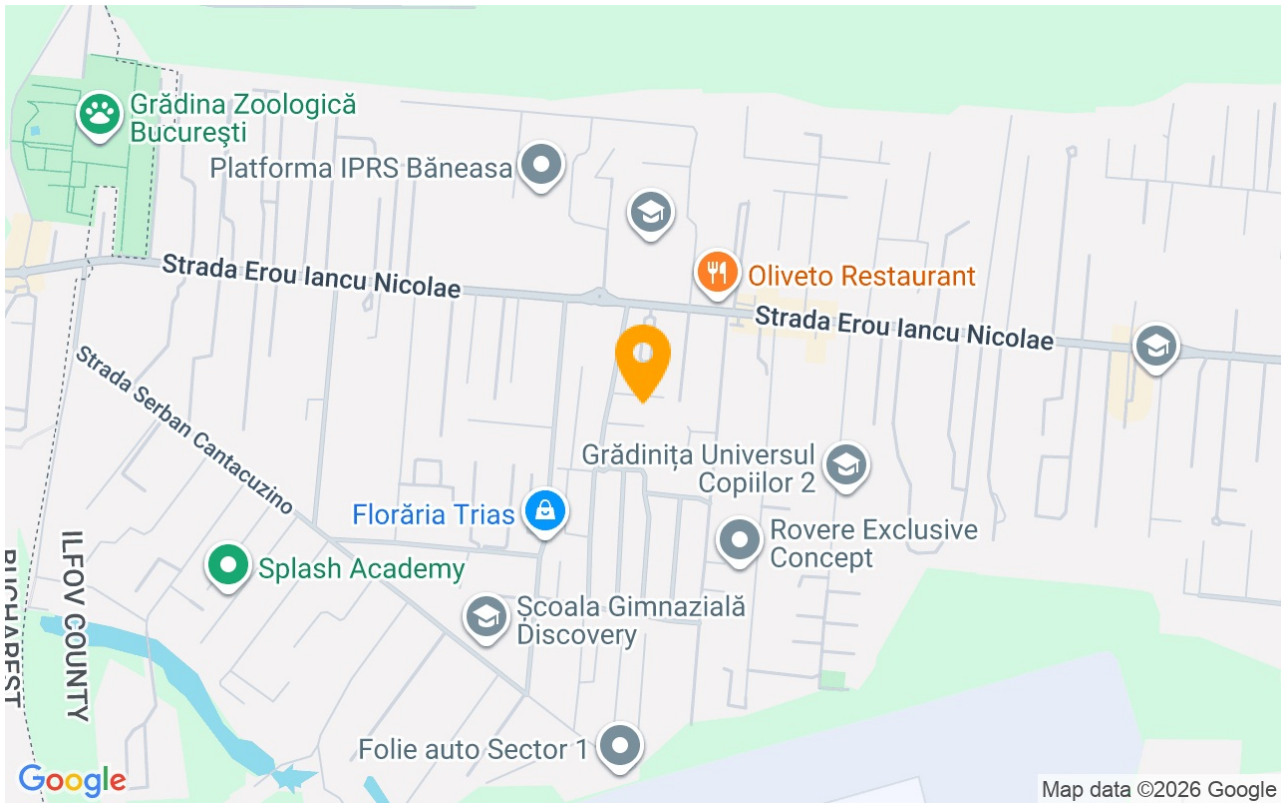
 Private heating

 Air conditioning

 Fireplace

 Swimming pool

Location



Photos

