



**Violetta Tudorache**

+40 729 005 624

contact@blissimobiliare.ro  
(mailto:contact@blissimobiliare.ro)

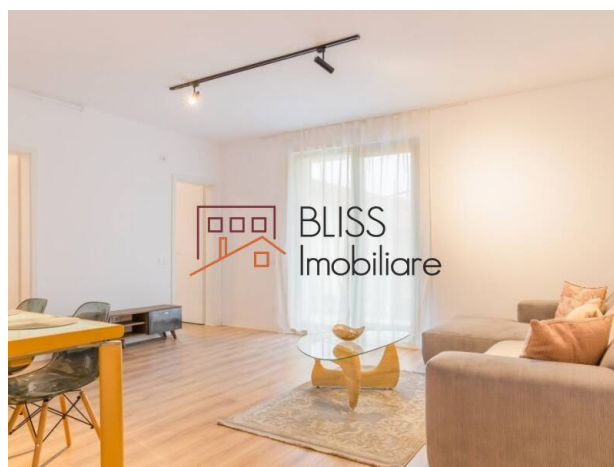
Updated on 29 July 2024

## 1 bedroom apartment

📍 Soho Design Apartments, Pipera OMV Rond,  
Bucharest / Ilfov

Web Reference

**#87282**



<https://blissimobiliare.ro/index.php/en/apartment-1-bedroom-for-rent-iancu-nicolae-pipera-bucharest-ilfov-87282> (<https://blissimobiliare.ro/index.php/en/apartment-1-bedroom-for-rent-iancu-nicolae-pipera-bucharest-ilfov-87282>)

### Description

One bedroom apartment in a 2020 boutique development with only 3 floors with elevator and underground parking close to the OMV Pipera roundabout, Plaza Pipera, with easy access to the city of Bucharest, to the Otopeni Airport and the A3 highway.

The apartment has one bedroom, closed kitchen, one bathroom and a generous terrace so that you can benefit at any time from the panorama and an infusion of fresh air. Floor heating over the full apartment and Viessmann central heating system.

The surfaces are as follows:

- Interior of the apartment: 52.57 sqm
- Balcony surface: 24.27 sqm
- Total constructed area: 91.05 sqm

Soho Apartments offers you the opportunity to enjoy a select and bohemian lifestyle, ensuring a balance between urban agglomeration and private space, secluded in privacy and comfort.

Boutique apartments are a new trend on the real estate market in Romania and represent the expression of luxury, unique and modern homes.

The Soho style is based on a contemporary architecture, which includes a minimalist design, built from high quality materials and premium finishes.

The building has a Schindler elevator, underground parking, space for strollers, bicycles, Viessmann central heating and Rehau underfloor heating, wireless surveillance system.



### Property details

Rooms no.	2
Useable surface	53m <sup>2</sup>
Constructed surface	77m <sup>2</sup>
Apartment type	Apartment
Type of rooms	Semi-independent
Type of comfort	Comfort 1
Bedrooms no.	1
Kitchens no.	1
Bathrooms no.	1
Building type	Block
Year built	2020
Config	1S+P+3
Floor	2
Balconies no.	1
State	Finished
Elevator	Yes
Earthquake risk class	Unclassified

### Amenities



Not furnished



Private heating



Suitable for office



## Location



## Photos

