



Violetta Tudorache

+40 729 005 624

contact@blissimobiliare.ro
(mailto:contact@blissimobiliare.ro)

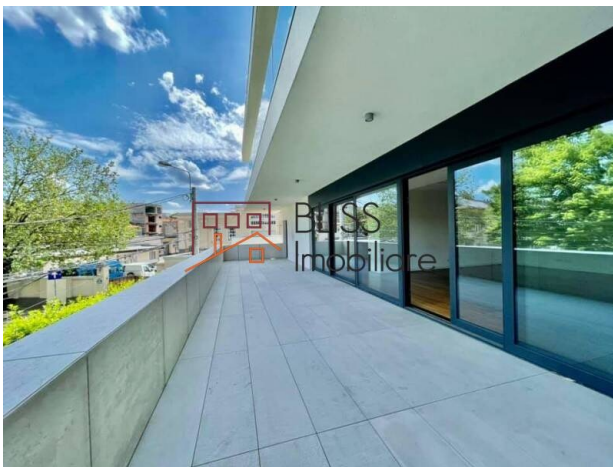
Updated on 25 March 2026

Luxury 4-Bedroom Residence in a Historic District

Aviatorilor, Bucharest

4,500 EUR +VAT / month

Web Reference
#93086



<https://blissimobiliare.ro/index.php/en/apartment-4-bedrooms-for-rent-dorobanti-primaverii-kiseleff-aviatorilor-bucharest-93086> (<https://blissimobiliare.ro/index.php/en/apartment-4-bedrooms-for-rent-dorobanti-primaverii-kiseleff-aviatorilor-bucharest-93086>)

Description

Luxury 4-Bedroom Residence - Elegance and Space in Kiseleff - Aviatorilor Area

Modern Comfort and Elegance in The Diplomatic District

We present an exceptional property that redefines premium urban living, strategically located in one of Bucharest's safest and greenest areas: Kiseleff - Aviatorilor. Situated on the 1st floor of a modern building completed in 2015, this impressive residence stands out through its vast spaces, high-end finishes, and remarkable natural light.

Vast Space and Detached Layout

With a usable area of 204 sqm, the apartment offers a perfect balance between social areas and private quarters:

- Living Area: A spacious living room, ideal for family dinners or relaxation, flooded with light thanks to the generous windows.
- Sleeping Area: Features 4 large bedrooms, designed to provide maximum comfort for every family member.
- Bathrooms: 4 modern bathrooms and a guest toilet, finished with luxury materials, ensuring full functionality for a large family.

- Terraces: 3 balconies providing private outdoor spaces for moments of tranquility.

High-End Amenities and Premium Finishes

The property is equipped to meet the highest residential demands:

- Kitchen: Fully equipped with modern appliances, including a dishwasher.
- Climate Control: High-performance air conditioning system and building central heating for optimal year-round comfort.
- Parking: Includes 1 indoor parking space in the underground garage, an essential asset in this exclusive neighborhood.
- Building Features: Secured building equipped with an elevator, located on a quiet street away from the noise of main roads.

Location: The Aviatorilor Lifestyle Standard

Positioned between Kiseleff Park and Herăstrău Park, it offers access to the city's finest lifestyle:

- Nature & Culture: Steps away from the city's largest parks and world-class museums.
- Transportation: Quick access to Piața Victoriei and Aviatorilor metro stations.
- Neighborhood: An area characterized by stunning historic buildings, embassies, international schools, and fine-dining restaurants.

Property details

Rooms no.	5
Useable surface	204m ²
Constructed surface	270m ²
Apartment type	Apartment
Type of rooms	Independent
Type of comfort	Comfort 1
Bedrooms no.	4
Kitchens no.	1
Bathrooms no.	4
Toilets no.	1
Building type	Block
Year built	2015
Config	1S+P+5
Floor	1
Balconies no.	3
State	Finished
Elevator	Yes
Parking inside	1

Amenities

 Equipped kitchen

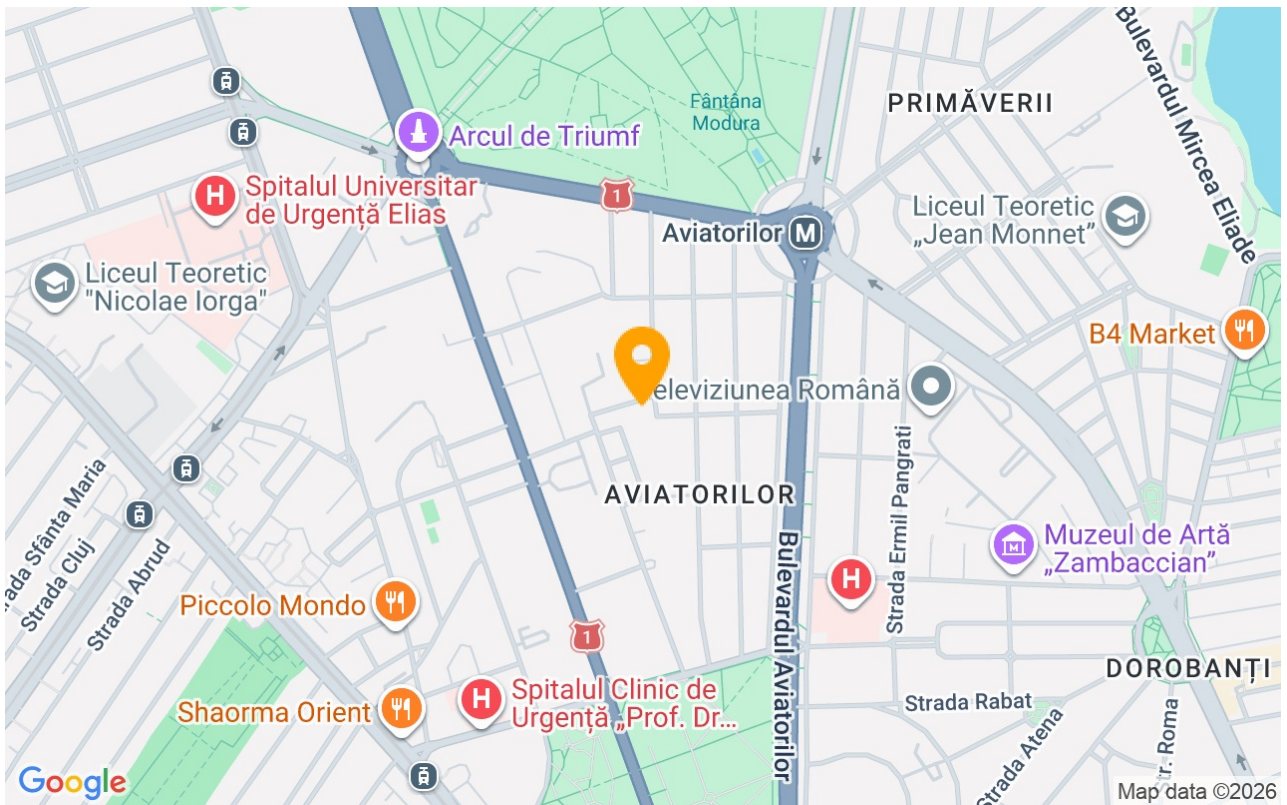
 Dishwasher

 Not furnished

 Building heating

 Air conditioning

Location



Photos

