



**Violetta Tudorache**

+40 729 005 624

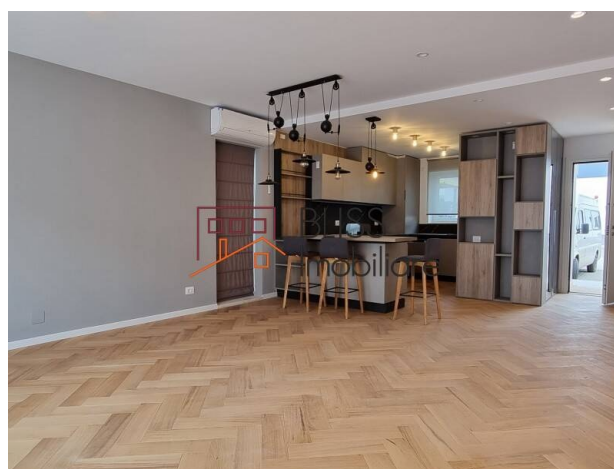
contact@blissimobiliare.ro  
(mailto:contact@blissimobiliare.ro)

Updated on 3 April 2026

## Premium GF+2F Villa with private garden and pool Pipera

Web Reference  
**#98545**

New Point Villas, Pipera Nord, Bucharest / Ilfov



<https://blissimobiliare.ro/index.php/en/villa-4-bedrooms-for-rent-iancu-nicolae-pipera-bucharest-ilfov-98545> (<https://blissimobiliare.ro/index.php/en/villa-4-bedrooms-for-rent-iancu-nicolae-pipera-bucharest-ilfov-98545>)

### Description

We present you a premium villa with pool and private garden, located in the secure residential complex New Point Villas in the Pipera area, in immediate vicinity of international schools (American School, British School) and the Baneasa area.

## Secured residential complex with villas, near international schools

The GF+2F villa is semi-detached, with a usable area of 135 sqm, located on a plot of land of 290 sqm. The private garden is extremely generous, with approx. 200 sqm and private pool. The construction is of high quality and was completed in 2021.

The residence has 5 detached rooms, with a modern layout: 4 spacious and bright bedrooms with dressing-room, living room, open kitchen with bar, 4 bathrooms and a guest toilet, spacious and intimate roof terrace.

The property is unfurnished, has multiple storage spaces that facilitate living, storage room with washing machine, and among the facilities are: individual central heating system, air conditioning, 2 outdoor parking spaces.

Schools and institutes such as the British School (BSB), Cambridge School, American School (AISB), French School and many other kindergartens and top schools mark one of the advantages of this premium area of Pipera.

The area benefits from numerous shops and the most important shopping centers nearby, such as Baneasa Shopping City and Promenada Mall, Strip Mall, Jolie Ville, etc. The proximity to the Baneasa Forest is a main advantage, the area is green, quiet, excellent for nature lovers who want to spend their time in the fresh air, with a modern and quality architecture.

In terms of public transport, the nearest metro station is the Pipera metro station which makes a quick connection to the center of Bucharest. Exit from Bucharest is also extremely easy.

Excellent for families with children looking for a premium residence in the Pipera area.




## Property details


<b>Rooms no.</b>	5
<b>Useable surface</b>	135m <sup>2</sup>
<b>Constructed surface</b>	155m <sup>2</sup>
<b>Bedrooms no.</b>	4
<b>Kitchens no.</b>	1
<b>Bathrooms no.</b>	4
<b>Toilets no.</b>	1
<b>Building type</b>	Villa
<b>Year built</b>	2021
<b>State</b>	Finished
<b>Total land</b>	290m <sup>2</sup>
<b>Print</b>	80m <sup>2</sup>
<b>Courtyard</b>	200m <sup>2</sup>
<b>Parking outside</b>	2


## Amenities

 Equipped kitchen


 Dishwasher

 Not furnished ( Willing to furnish )

 Private heating

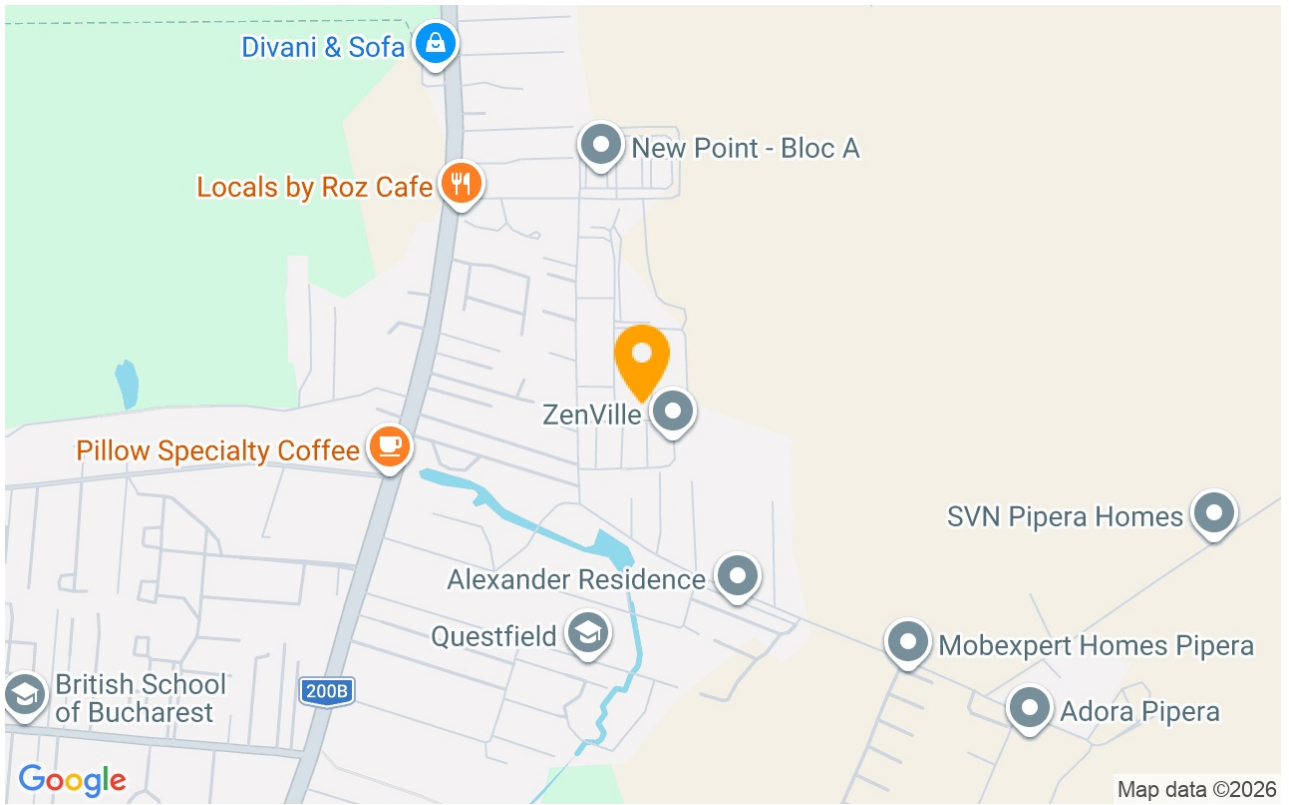
 Suitable for office

 Air conditioning

 Swimming pool



## Location



## Photos

