



Isfahan Doekhie

+40 729 896 897


contact@blissimobiliare.ro
(mailto:contact@blissimobiliare.ro)

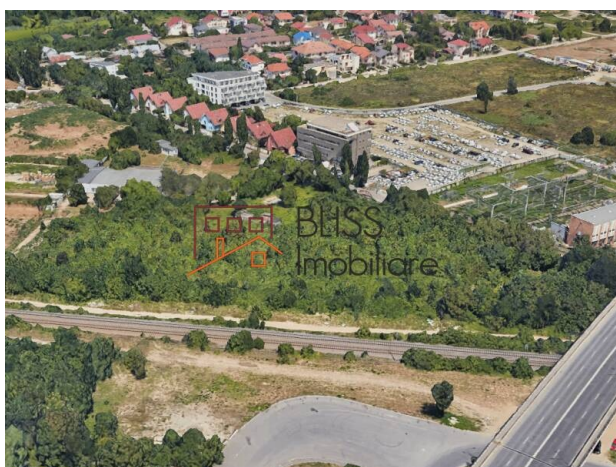
Updated on 31 July 2023

14.500 m² Building plot border Pipera Bucharest POT 70% CUT 3,0

7,250,000 EUR
500 EUR / m²

Web Reference
#900376

 Campul Pipera Bucuresti, Bucharest



<https://blissimobiliare.ro/index.php/en/land-for-sale-aviatiei-promenada-mall-metro-pipera-bucharest-900376> (<https://blissimobiliare.ro/index.php/en/land-for-sale-aviatiei-promenada-mall-metro-pipera-bucharest-900376>)

Description

Building plot of 14,500sqm in the Aviatiei OMV Pipera area, located 15 minutes walk from the Aurel Vlaicu metro station.

Situated between Aviatiei and OMV Pipera with large opening on main road

According to PUZ Inel Median, the land is included in the following subzones:

- UTR 3 - 34 Subzone of public green spaces with unlimited access - POT = 15%, CUT = 0.2; allowed uses: planted spaces, street furniture, parking lots, buildings for culture, sports recreation and annexes that do not exceed 15% of the total area.
- UTR 3 - 35 Mixed subzone with POT = 70%, CUT = 3, Maximum allowed height GF + 14F.
- The maximum surface that can be built in UTR 3 - 35 is ~ 6.200sqm.

The land has all the utilities at the property limit.

Land details

Land type	Constructible land
Size	14,500 m ²
Land usage coefficient	3
Percentage of occupation	70%
Street openings	
Road type	Asphalt
Protected area	No

Utilities

💡 Electricity

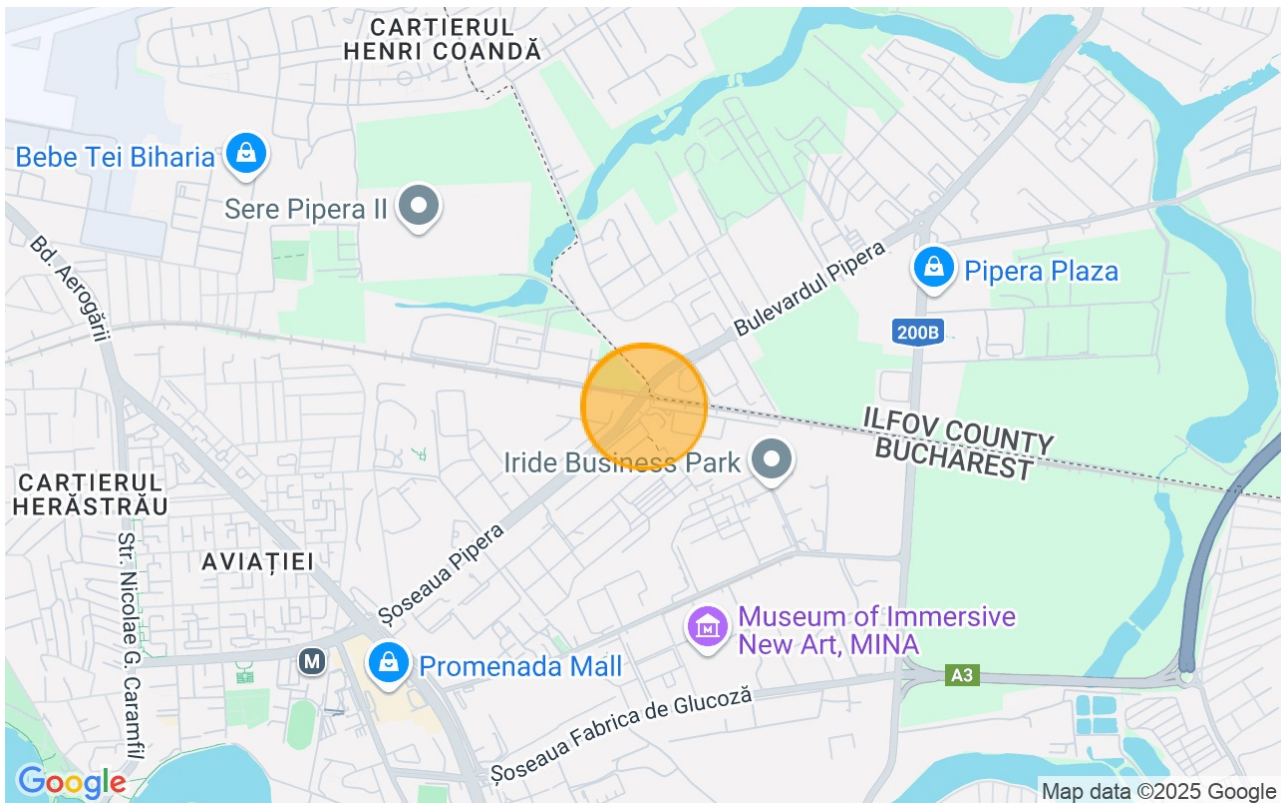
🚰 Water

🔥 Natural gas

🚰 Sewage

📶 Telecom

Location



Photos

