



**Isfahan Doekhie**

+40 729 896 897

contact@blissimobiliare.ro  
(mailto:contact@blissimobiliare.ro)

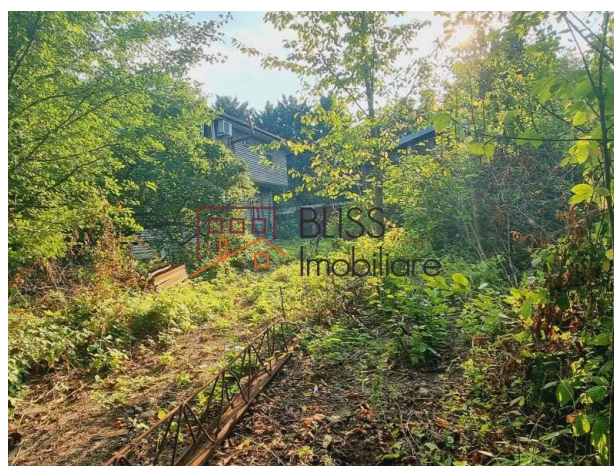
Updated on 19 February 2024

## Land 798 m<sup>2</sup>;

📍 Iancu Nicolae, Bucharest / Ilfov

**680,000 EUR**  
**852 EUR / m<sup>2</sup>**

Web Reference  
**#902869**



<https://blissimobiliare.ro/index.php/en/land-for-sale-iancu-nicolae-pipera-bucharest-ilfov-902869>  
(<https://blissimobiliare.ro/index.php/en/land-for-sale-iancu-nicolae-pipera-bucharest-ilfov-902869>)

### Description

798 sqm of land for residential development just a few steps from the popular Strada Erou Iancu Nicolae in Pipera close to the corner of Iancu de Hunedoara with Iancu Nicolae.

This area has been developed and is fully being developed for premium housing. Many families, local and foreigners, have relocated to this area because of the many private international schools located in this area just North of Bucharest.

This land plot is situated at a short walking distance to the British School of Bucharest, the Strip Mall, the Lidl supermarket and the Jolie Ville shopping center and the International Cambridge School.

The land plot has an opening of appx 21m at the asphalted main road with a depth of almost 40m.

On the land are two wooden construction buildings that can be easily demolished.

At the land you have all utilities like electricity, gas, water and sewage.






This is an excellent land and position for a premium residential development.



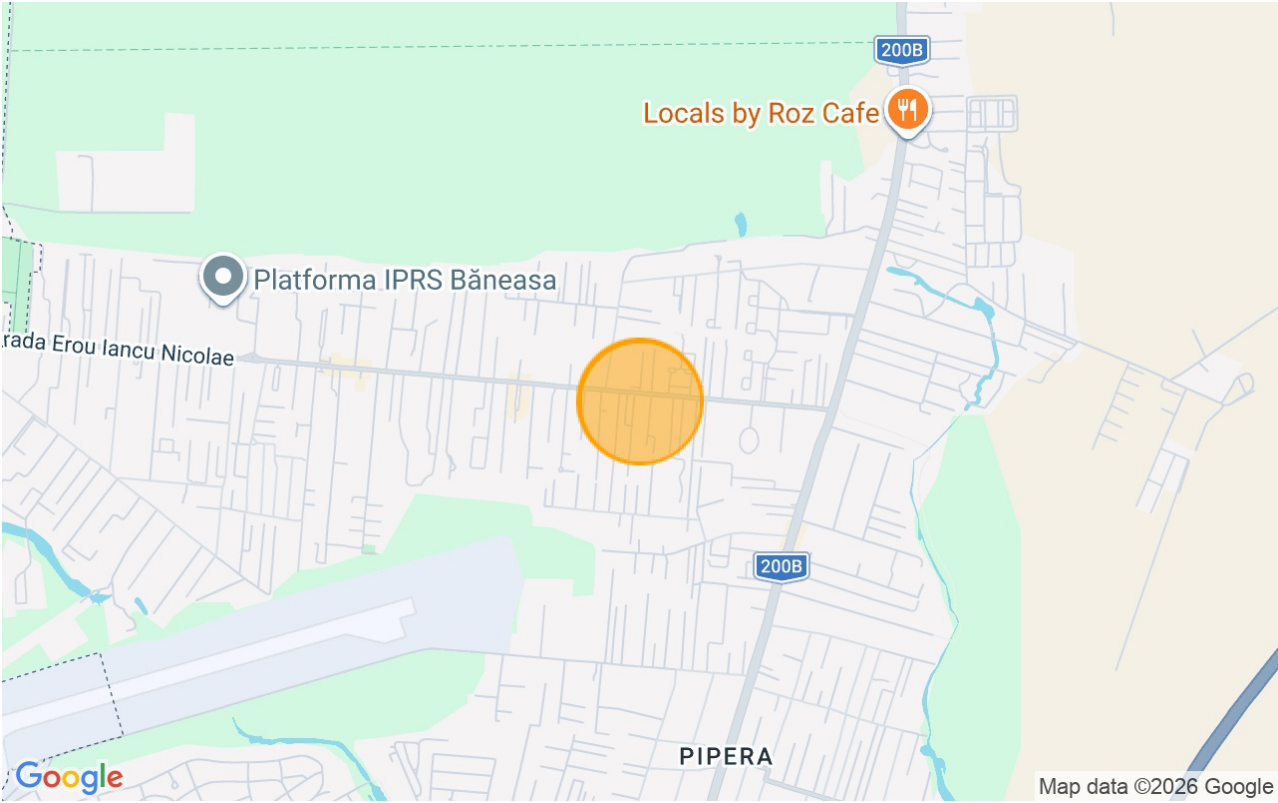
Land details

|                 |                    |
|-----------------|--------------------|
| Land type       | Constructible land |
| Size            | 798 m²             |
| Street openings |                    |
| Road type       | Asphalt            |
| Protected area  | No                 |

Utilities

-  Electricity
-  Water
-  Natural gas
-  Sewage
-  Telecom

Location





## Photos

