



Isfahan Doekhie

+40 729 896 897

contact@blissimobiliare.ro
(mailto:contact@blissimobiliare.ro)

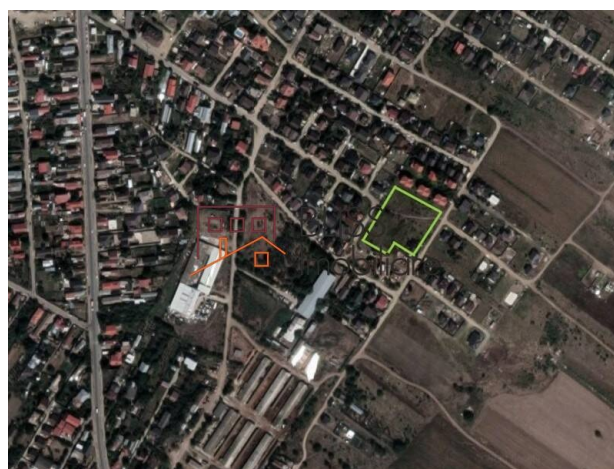
Updated on 23 September 2025

Superb 3.941 m² buildable land in residential development area

Comuna Berceni, Bucharest / Ilfov

249,500 EUR
63 EUR / m²

Web Reference
#904841



<https://blissimobiliare.ro/index.php/en/land-for-sale-comuna-bercen-bucharest-ilfov-904841>
(<https://blissimobiliare.ro/index.php/en/land-for-sale-comuna-bercen-bucharest-ilfov-904841>)

Description

3,941 sqm Intravilan Land - Berceni, Vasile Goldiș Area

Excellent land for residential real estate investment and development

BLISS Imobiliare presents for sale a prime intravilan land plot with high development potential, located in Comuna Berceni, Vasile Goldiș area – one of the fastest-growing residential zones in the southern Bucharest area.

Strategic Location

- Only 6 minutes from the proposed extension of Metro Line 2, ensuring excellent future connectivity and adding strong investment value.
- Bulevardul 1 Mai is just 550 m away, providing direct access to the area's main infrastructure.
- Immediate proximity to School No. 1, Kindergarten No. 1 (with extended program), shops, and public transport (the main bus line in Berceni and maxi-taxi station).

Technical Details

- Total land area: 3,941 sqm
- Two generous street frontages: 55 m and 34 m, allowing flexibility in future project design
- Utilities available in the area: electricity, gas, telecommunications

Investment Highlights




- Located in a rapidly expanding residential development area with growing demand for modern housing
- Excellent connectivity via both existing infrastructure and the planned metro line
- Suitable for residential projects (individual villas, duplexes, or small compounds) as well as mixed-use developments

View location on <https://goo.gl/maps/EcPb2hBFkGwXApfj7> (<https://goo.gl/maps/EcPb2hBFkGwXApfj7>)

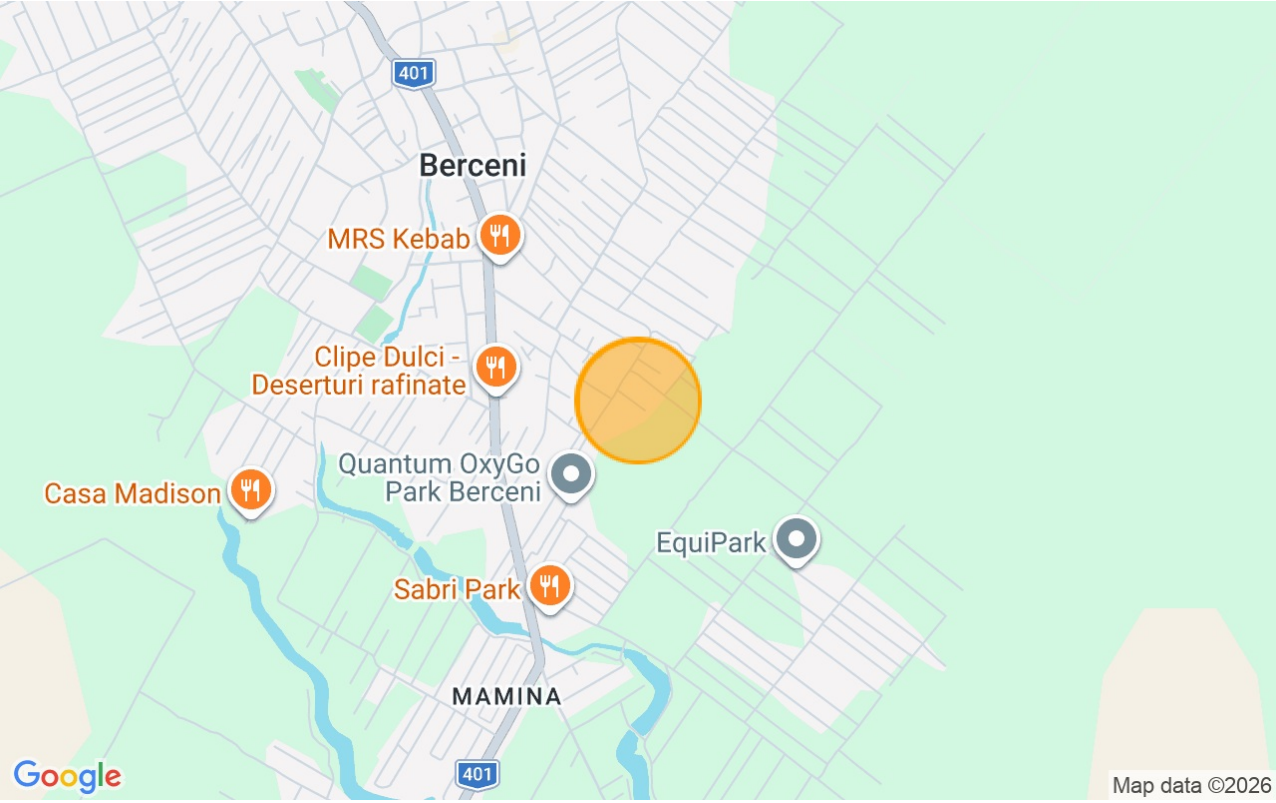
Land details

Land type	Constructible land
Size	3,941 m²
Street openings	
Road type	Gravel
Protected area	No

Utilities

-  Electricity
-  Natural gas
-  Telecom

Location



Photos

