



Isfahan Doekhie

+40 729 896 897

contact@blissimobiliare.ro

(mailto:contact@blissimobiliare.ro)

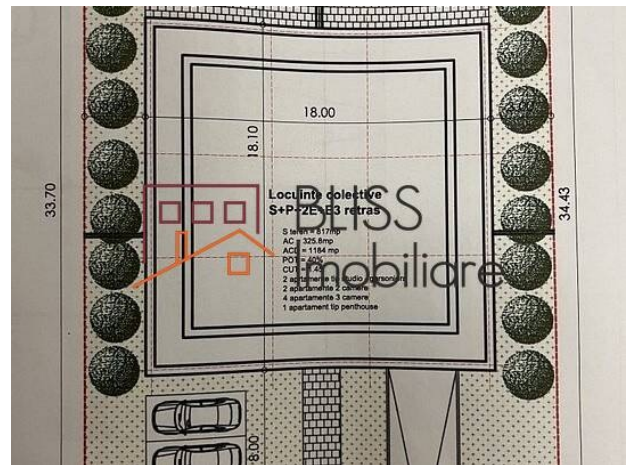
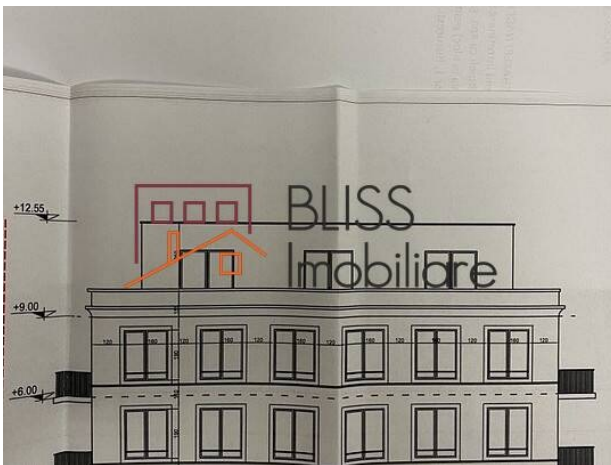
Updated on 9 November 2022

Land 817 m²;

Iancu Nicolae, Bucharest / Ilfov

639,000 EUR +VAT
782 EUR / m²

Web Reference
#904843



<https://blissimobiliare.ro/index.php/en/land-for-sale-iancu-nicolae-pipera-bucharest-ilfov-904843>
(<https://blissimobiliare.ro/index.php/en/land-for-sale-iancu-nicolae-pipera-bucharest-ilfov-904843>)


Land details

Land type	Constructible land
Size	817 m ²
Land usage coefficient	2.2
Percentage of occupation	40%
Street openings	
Road type	Asphalt
Protected area	No

Utilities

 Electricity

 Water

 Natural gas

 Sewage

 Telecom

Location

