



**Isfahan Doekhie**

+40 729 896 897

contact@blissimobiliare.ro  
(mailto:contact@blissimobiliare.ro)

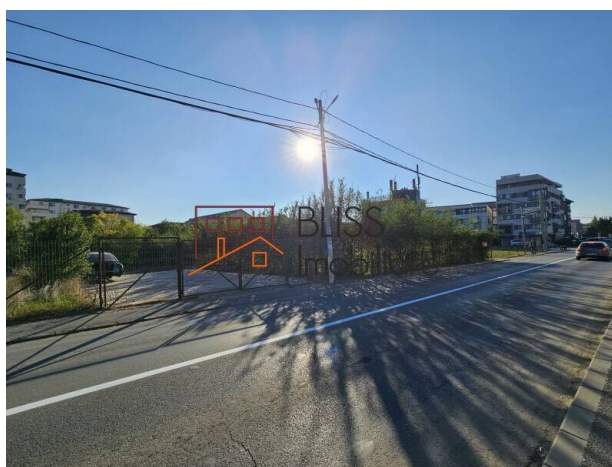
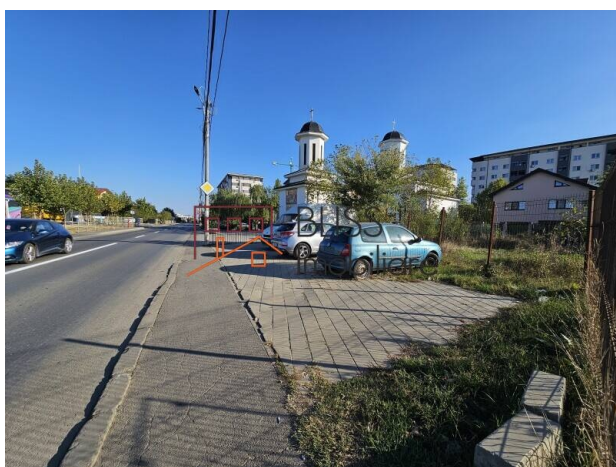
Updated on 20 October 2024

## Exceptional Investment Opportunity Prime 937 sqm Land 41m Frontage

Chiajna, Bucharest / Ilfov

**234,250 EUR**  
**250 EUR / m<sup>2</sup>**

Web Reference  
**#906223**



<https://blissimobiliare.ro/index.php/en/land-for-sale-chiajna-bucharest-ilfov-906223>  
(<https://blissimobiliare.ro/index.php/en/land-for-sale-chiajna-bucharest-ilfov-906223>)

### Description

**Exceptional Investment Opportunity in Chiajna Dudu, Ilfov - Prime 937 sqm Land with 41m Frontage**

## Strategic Location Near Militari Residence for High Demand

This 937 sqm plot of building land, located just behind Militari Residence, presents an unparalleled opportunity for investors and developers. With a large opening of 41 meters on the main streets and all utilities readily available, this land offers immense potential for various profitable developments.

### Key Advantages for Investors and Developers:

#### Strategic Location

- Situated in the rapidly developing area of Chiajna Dudu, Ilfov, the land benefits from its proximity to Militari Residence – one of the most dynamic residential complexes in Bucharest. The high visibility and accessibility from the main streets make this land a prime location for multiple business ventures, ensuring excellent market demand.

### Versatile Development Potential

This plot is ideal for a range of development projects:

- A boutique residential building, catering to the growing demand for modern housing in the area.
- A commercial retail outlet, benefiting from the high footfall of Militari Residence and the surrounding neighborhoods.
- A small industrial processing unit, taking advantage of the plot's size, location, and access to all necessary utilities.

#### Complete Utilities on Site

- All essential utilities—water, electricity, gas, and sewage—are already available on the land, significantly reducing the initial development costs and enabling a quicker start for your project.

#### High Return on Investment (ROI)

- The continuous expansion of Militari Residence and the growing population in the Chiajna Dudu area offer investors a strong rental market and high property value appreciation. Whether developing residential units or commercial spaces, this investment promises excellent long-term returns.

#### Increased Demand for Residential and Commercial Spaces

- As the area behind Militari Residence continues to flourish, the demand for new residential properties and commercial facilities is rising. This land provides the perfect opportunity to meet that demand with a profitable and timely development.






This 937 sqm plot in Chiajna Dudu is a rare find that offers flexibility, prime location, and high investment potential. Seize this opportunity to develop a project that capitalizes on the area's booming growth and ensures strong future returns.



Land details

Land type	Constructible land
Size	937 m²
Street openings	
Road type	Asphalt

Utilities

-  Electricity
-  Water
-  Natural gas
-  Sewage
-  Telecom

Location





## Photos

