

**Violetta Tudorache**

☎ +40 729 005 624

✉ [contact@blissimobiliare.ro](mailto:contact@blissimobiliare.ro)  
(mailto:contact@blissimobiliare.ro)

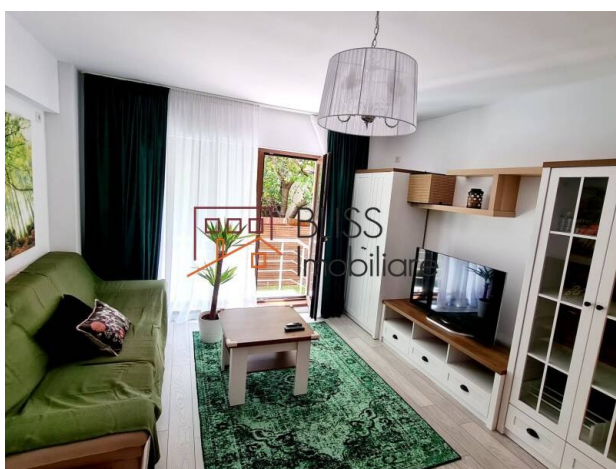
Updated on 26 March 2025

## 2-Bedroom Apartment With 60 Sqm Private Yard

Web Reference

#100731

📍 Baneasa Aerogarii, Bucharest



<https://blissimobiliare.ro/en/apartment-2-bedrooms-for-rent-herastrau-nordului-bucharest-100731>  
(<https://blissimobiliare.ro/en/apartment-2-bedrooms-for-rent-herastrau-nordului-bucharest-100731>)

### Description

Discover refined living in this 2-bedroom, fully-detached apartment located in an exclusive boutique building with only 11 apartments, recently completed. Nestled in the premium Băneasa area, this property provides a private courtyard and upscale amenities for a unique residential experience.

## Prime Location In Băneasa, Close To Shopping Centers And Parks

### Key Features of the Apartment:

- **Usable Area:** 80 sqm
- **Private Courtyard:** 60 sqm, ideal for relaxing and leisure activities
- **Parking:** large 22 sqm parking space included
- **Sunny Loggia:** 5 sqm, perfect for peaceful moments outdoors

### High-end Finishes and Amenities

This fully furnished apartment boasts premium finishes and comprehensive amenities designed for top-tier comfort:

- **Security System:** video intercom for enhanced safety
- **Efficient Heating:** underfloor heating and private boiler

- **Comfort and Functionality:** air conditioning, smart TV, washing machine, and dishwasher
- **Quality Materials:** travertine, tiles, and parquet flooring
- **Elegant Interior Design:** quality furniture and refined decorations

### **Premium Location in Băneasa**

Located in Băneasa, this apartment offers convenient access to essential locations and amenities:

- **Shopping Centers:** luxury stores and supermarkets just a short walk away
- **Restaurants and Cafés:** diverse culinary options nearby
- **Leisure Areas:** parks and recreational spaces for quality free time

This apartment is the ideal choice for those seeking an exclusive lifestyle and modern amenities in a refined and intimate setting.



Property details

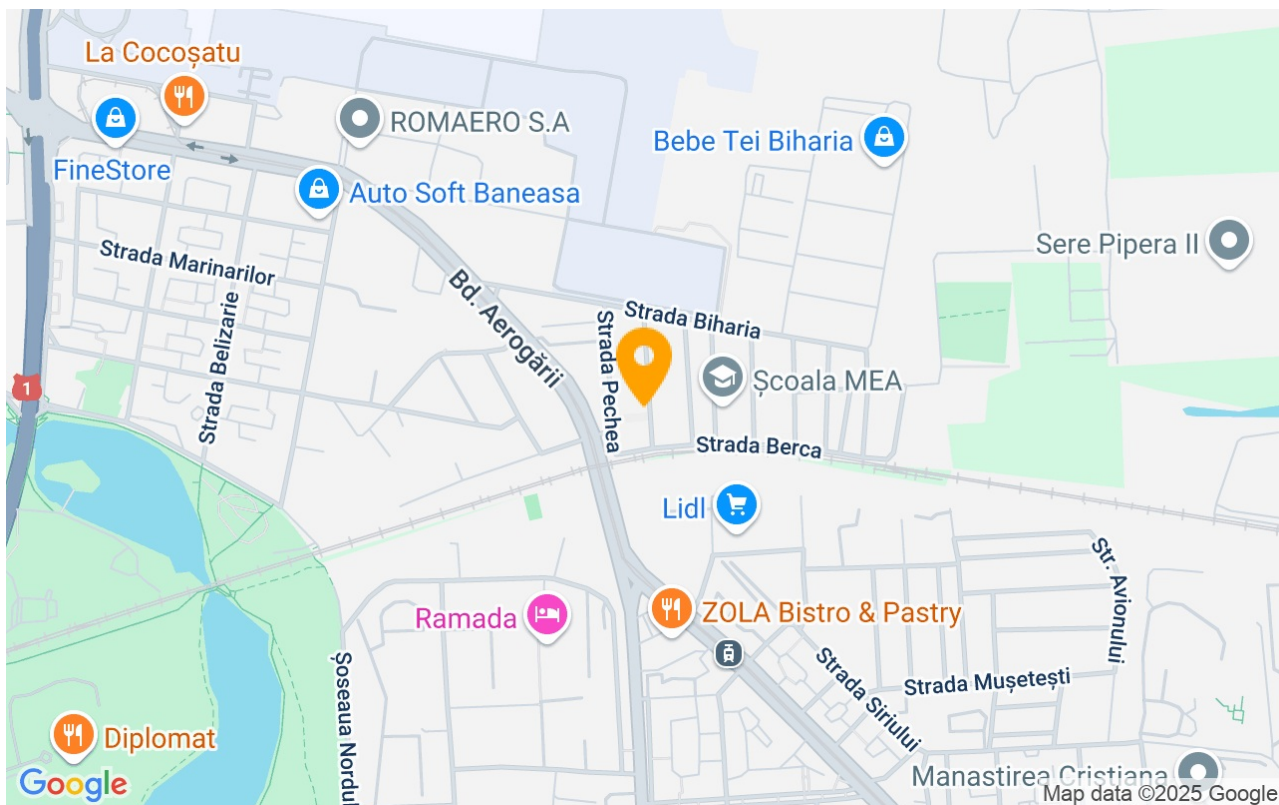
Rooms no.	3
Useable surface	80m²
Constructed surface	162m²
Apartment type	Apartment
Type of rooms	Independent
Type of comfort	Comfort 1
Bedrooms no.	2
Kitchens no.	1
Bathrooms no.	2
Building type	Block
Year built	2021
Config	1S+P+5
Floor	Groundfloor
Balconies no.	1
State	Finished
Elevator	Yes
Parking outside	1

Amenities

-  Equipped kitchen
-  Dishwasher
-  Furnished
-  Private heating
-  Air conditioning



## Location



## Photos

