



Violetta Tudorache

+40 729 005 624

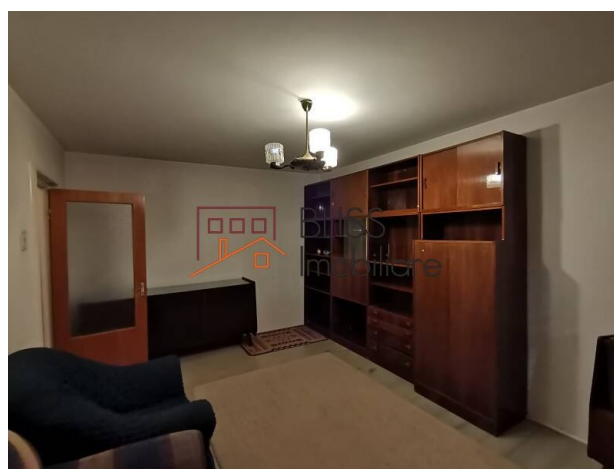
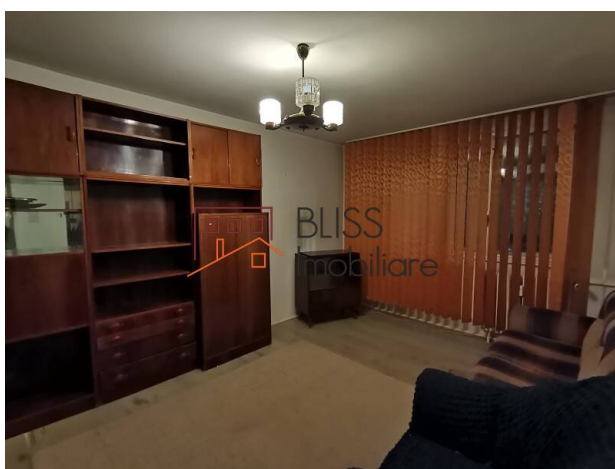
contact@blissimobiliare.ro
(mailto:contact@blissimobiliare.ro)

Updated on 15 November 2021

2-bedroom apartment 1 floor of 4 Brancoveanu

Web Reference
#101297

Constantin Brancoveanu, Bucharest



<https://blissimobiliare.ro/en/apartment-2-bedrooms-for-sale-bercen-popesti-leordeni-bucharest-101297> (<https://blissimobiliare.ro/en/apartment-2-bedrooms-for-sale-bercen-popesti-leordeni-bucharest-101297>)

Description

2-bedroom apartment with an area of 61.44 sqm situated on the first floor of 4 storey building in the Brancoveanu area.

2-bedroom apartment near shopping mall and

Located next to Budimex, overlooking the back, quiet, bright area.




Subway station (Piața Sudului) 15 minutes and about 20 minutes to: Orașelul Copiilor, Grand Arena Mall, Sun Plaza and Piața Agroalimentară Berceni-Olteniței.

The parking place can be taken over by the buyer, from ADP Sector 4.

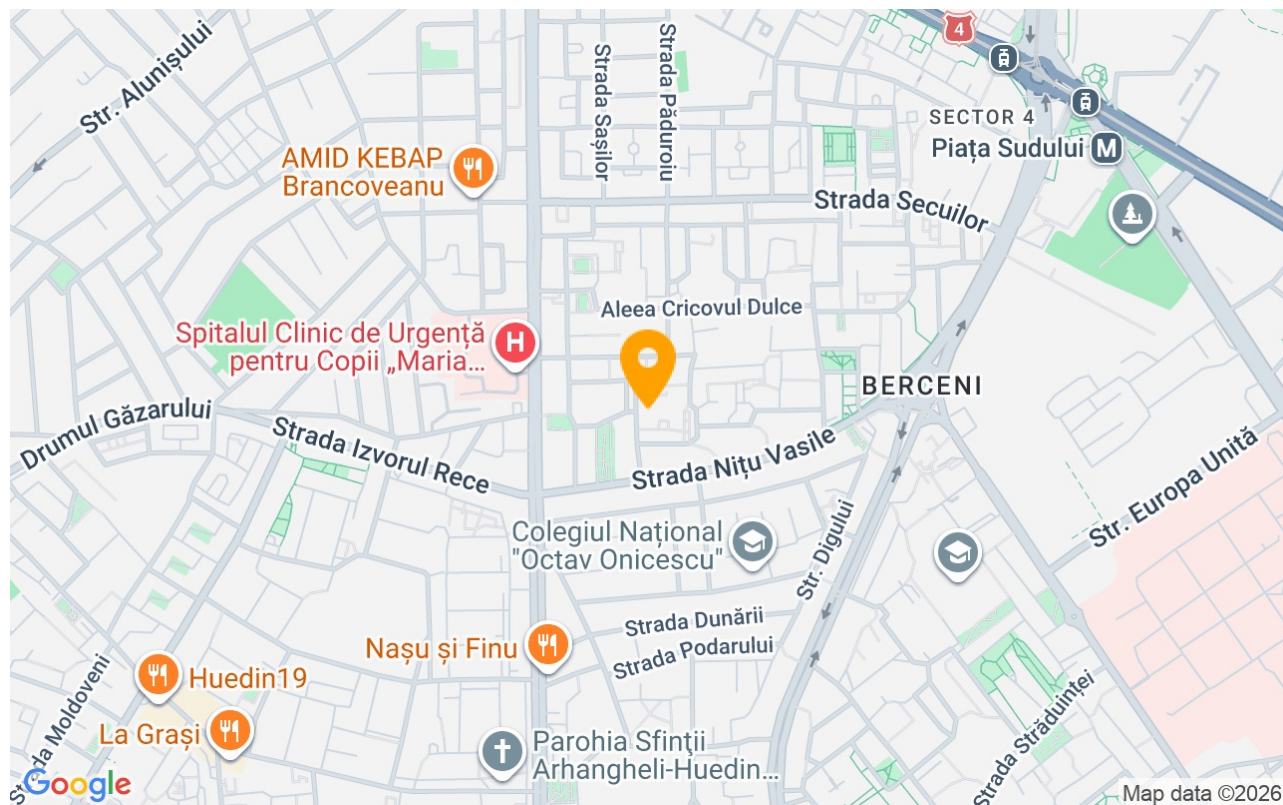
Property details

| | |
|-----------------------|--------------|
| Rooms no. | 3 |
| Useable surface | 61m² |
| Apartment type | Apartment |
| Type of rooms | Independent |
| Type of comfort | Comfort 1 |
| Bedrooms no. | 2 |
| Kitchens no. | 1 |
| Bathrooms no. | 1 |
| Building type | Block |
| Year built | 1976 |
| Config | 1S+P+4 |
| Floor | 1 |
| Balconies no. | 1 |
| State | Finished |
| Elevator | No |
| Earthquake risk class | Unclassified |

Amenities

-  Semi furnished (Willing to take out)
-  City heating
-  Suitable for office

Location



Photos

