



Violetta Tudorache

+40 729 005 624

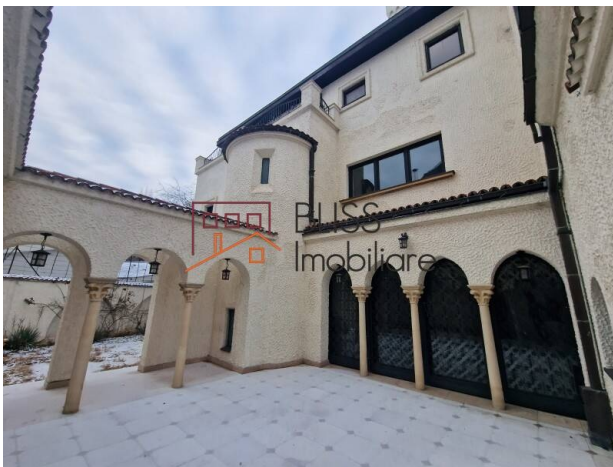
contact@blissimobiliare.ro
(mailto:contact@blissimobiliare.ro)

Updated on 12 November 2024

Historical villa of 1,437 sqm with 28-rooms

Web Reference
#101507

 Dorobanti Capitale, Bucharest



<https://blissimobiliare.ro/en/villa-28-rooms-for-rent-dorobanti-primaverii-kiseleff-aviatorilor-bucharest-101507> (<https://blissimobiliare.ro/en/villa-28-rooms-for-rent-dorobanti-primaverii-kiseleff-aviatorilor-bucharest-101507>)

Description

BLISS Imobiliare presents a very spacious and high quality historical villa in the Dorobanti area, near Piata Victoriei and Kiseleff Park. This wonderful house has a built area of 1.437sqm, of which 1.000sqm usable, with an impressive configuration of 1B+GF+2.

The villa is suitable for office space near Piata Victoriei.

The building is spectacular both for the generous space it offers and for the special style it represents. It has 28 very large rooms, 2 spacious and modern kitchens, 4 large balconies, 9 bathrooms and 2 guest toilets.

Excellent for commercial activity such as restaurant or other. If you are a person with imagination and you love the idea of combining the concepts of "old" with "new", given the history it presents and how many ways you can transform it, then this house is for you.

The villa has been completely restored and renovated, this involving carpentry, parquet and facade, as well as the entire system of installations.

This is the perfect example of a Neo-Mudejar style, being visible in the specific decoration elements next to a modern structure.

The living room features different arches, in a semicircle, associated with a slender column with a romanesque capital. However, the aesthetics are represented by the fine elements of decoration specific to oriental art. The solid wood parquet floor, decorated in a decorative way, is associated with processed solid wood beams.

The parquet is painted with specific Arabic elements: fish scales, blind arches, plaids, rhombuses and crosses. The window sills and arcades are also painted with elements from the style repertoire and the finishes are in calcio vecchio (a premium decorative finish, based on a series of special pigments, with iridescent reflections and a visual aspect full of personality).

The interior structure of the villa has been maintained exactly, on the ground floor there is a generous living room of 86sqm and dining of 45sqm, kitchen, 4 bedrooms and 2 bathrooms. Instead, on the floors there are 8 and 7 rooms with 4 bathrooms and two balconies, respectively.

The special architectural style is distinguished on the outside by rows of pointed arches, made of brick.

They are associated with stone components specific to the Romanesque style and find a perfect continuity in the interior, through semicircular or broken arches and oriental decoration.


The brick exterior fence with a decorative arch provides privacy. There is also a garage in the courtyard, and two parking spaces are available.


Property details

Rooms no.	28
Useable surface	1000m ²
Constructed surface	1437m ²
Kitchens no.	2
Bathrooms no.	9
Toilets no.	2
Building type	Villa
Balconies no.	4
State	Finished
Parking inside	1
Parking outside	2

Amenities

 Semi furnished

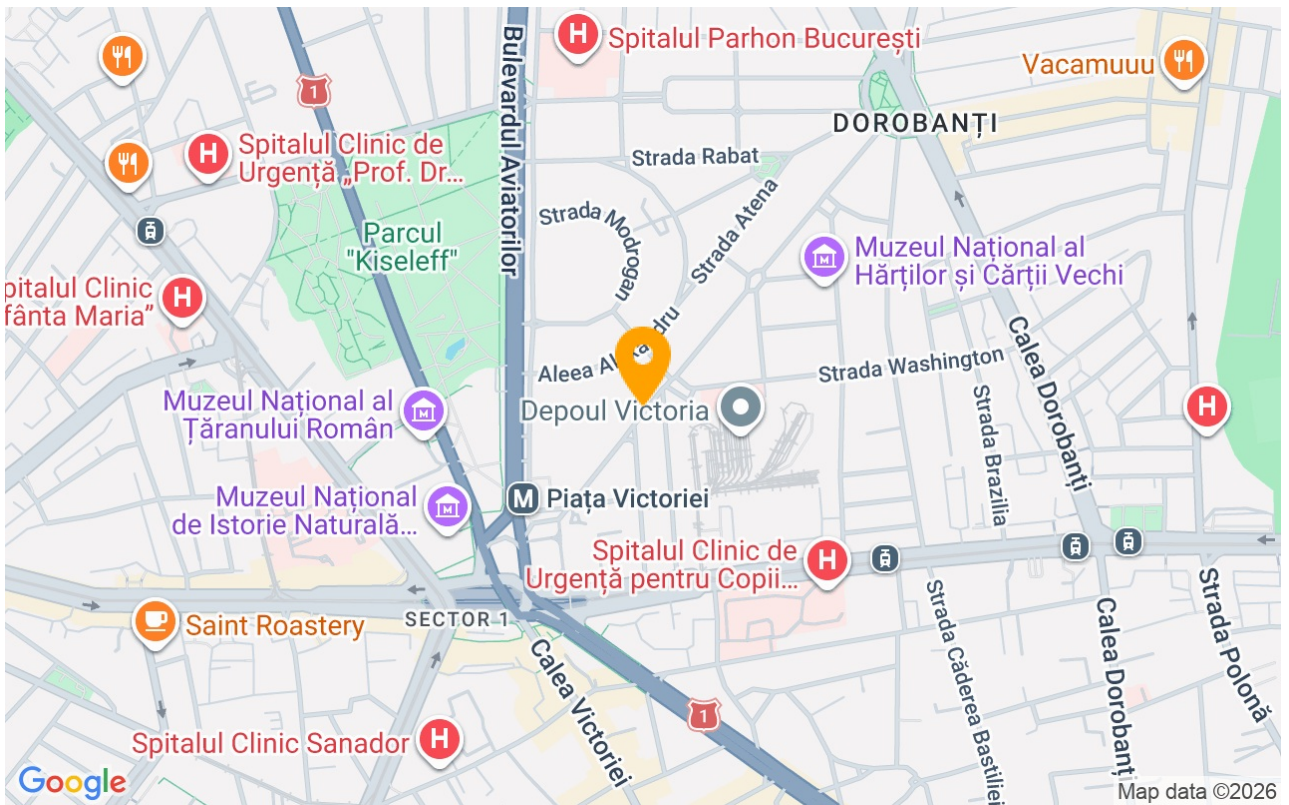
 Private heating

 Suitable for office

 Air conditioning

 Fireplace

Location



Photos

