

**Violetta Tudorache**

☎ +40 729 005 624

✉ [contact@blissimobiliare.ro](mailto:contact@blissimobiliare.ro)

(mailto:contact@blissimobiliare.ro)

Updated on 19 February 2026

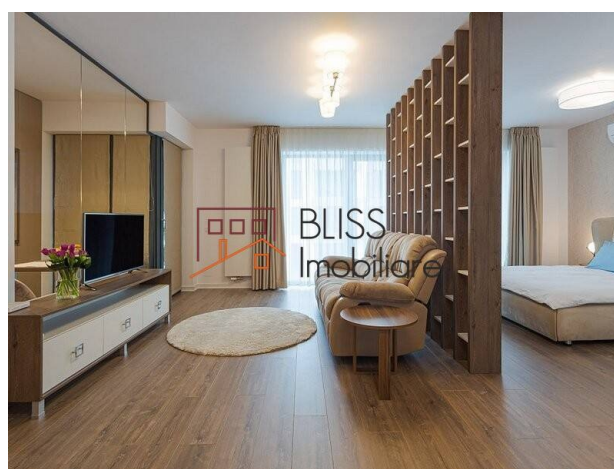
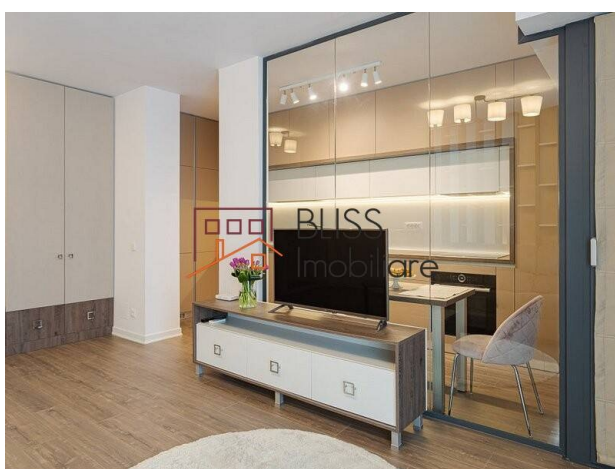
## Elegant Studio Apartment in Cloud 9 Residence

**800 EUR/ month**

Web Reference

**#103940**

📍 Cloud9 Residence, Aviatiei Manastirea  
Cristiana, Bucharest



<https://blissimobiliare.ro/en/apartment-1-bedroom-for-rent-aviatiei-promenada-mall-metro-pipera-bucharest-103940> (<https://blissimobiliare.ro/en/apartment-1-bedroom-for-rent-aviatiei-promenada-mall-metro-pipera-bucharest-103940>)

### Description

Discover urban comfort and elegance in this studio-style apartment located in the prestigious Cloud 9 Residence, in the Aviatiei/Pipera area. Smartly divided into 2 rooms, this 49 sqm apartment offers the ideal space for a modern and dynamic lifestyle.

### Prime Location with Excellent Connectivity

Situated on the 6th floor out of 8, the apartment features a bright and welcoming living area that includes a spacious living room and an open kitchen, perfect for relaxing or socializing. The adjoining terrace adds extra value, providing a wonderful spot to enjoy your morning coffee or take in the urban views.

The night area is separate to offer privacy and comfort, including a generous bedroom and a modern bathroom equipped with all necessary amenities.

Cloud 9 Residence is located in the Aviatiei/Pipera area, one of the most sought-after and developed areas in Bucharest. With easy access to public transport, main thoroughfares, and being close to business centers, restaurants, cafes, and shopping centers, the location offers everything you need within reach.

The residential complex benefits from enhanced security, professional management services, and modern facilities, ensuring a comfortable and safe lifestyle for all its residents.

Don't miss the opportunity to live in an elegant and well-located apartment in Cloud 9 Residence. Contact us for more details and to schedule a viewing!





Property details


Rooms no.	2
Useable surface	49m²
Constructed surface	66m²
Apartment type	Apartment
Type of rooms	Independent
Bedrooms no.	1
Kitchens no.	2
Bathrooms no.	2
Building type	Block
Year built	2020
Config	2S+P+11
Floor	6
Balconies no.	1
State	Finished
Elevator	Yes
Parking inside	1

Amenities

 Equipped kitchen

 Dishwasher

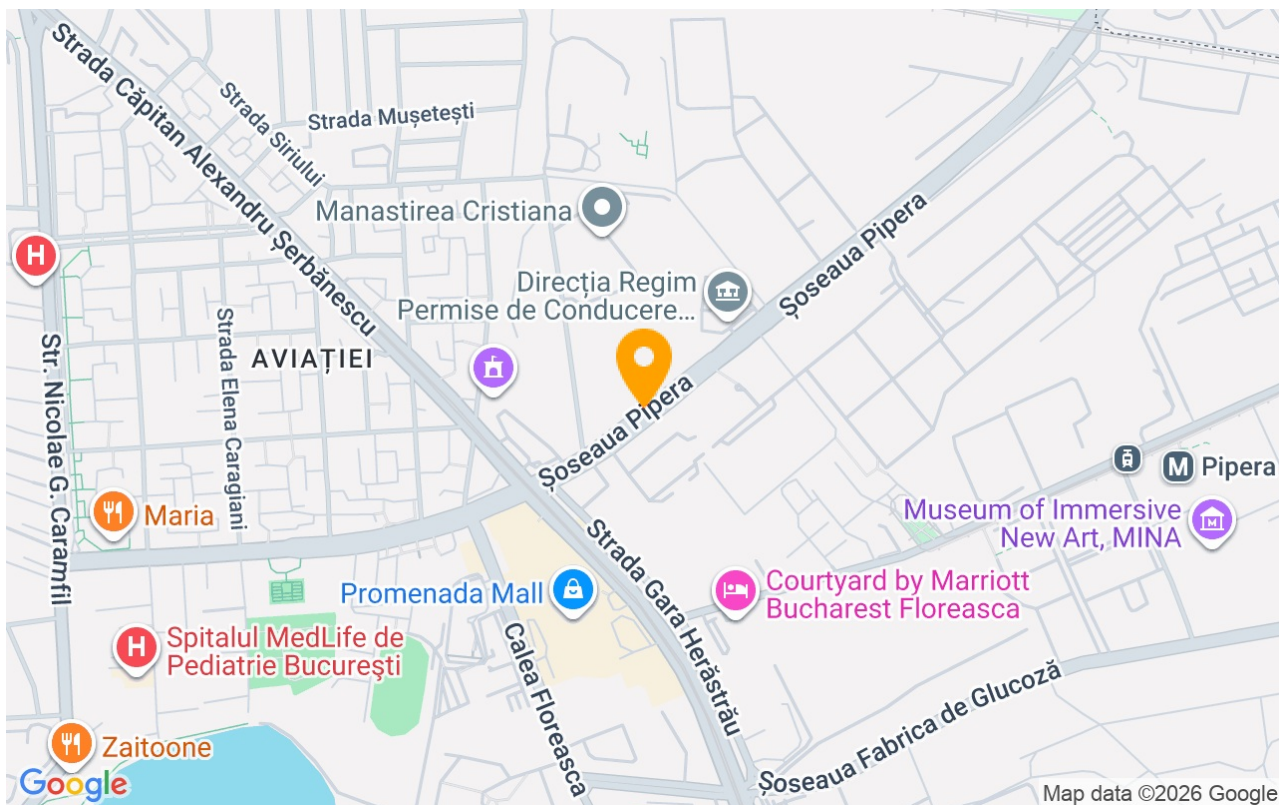
 Furnished

 Building heating

 Air conditioning



## Location



## Photos

