



**Violetta Tudorache**

+40 729 005 624

contact@blissimobiliare.ro  
(mailto:contact@blissimobiliare.ro)

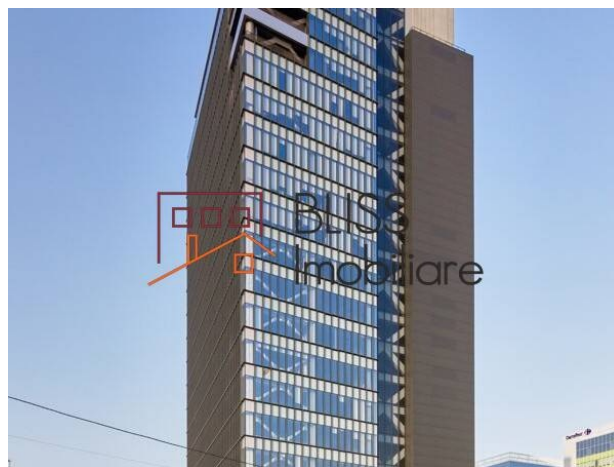
Updated on 10 March 2022

## office space

📍 Globalworth Plaza, Floreasca Business Park  
Promenada Mall, Bucharest

Web Reference

**#105256**



<https://blissimobiliare.ro/en/office-space-for-rent-aviatiei-promenada-mall-metro-pipera-bucharest-105256> (<https://blissimobiliare.ro/en/office-space-for-rent-aviatiei-promenada-mall-metro-pipera-bucharest-105256>)

## Description

Retail commercial space of 386 sqm on the ground floor of the Globalworth Plaza Office building. Situated opposite the Promenada shopping mall and just 5 minutes walking to the Aurel Vlaicu metro station.

This area is a highly frequented area and is one of the main business districts of Bucharest.

The retail space is excellent for a restaurant having had this destination in the last few years. Due to its high visibility it is also perfect for other retail destinations.

Globalworth Plaza is a Class "A" multi-tenant office building with excellent visibility, located in the northern part of Bucharest at the junction of Pipera Road and Barbu Vacarescu Boulevard, right by the entrance to the Calea Floreasca area. The office building faces our Globalworth Tower landmark development and is one of the tallest office towers in Bucharest.

Globalworth Plaza has excellent access to the public transportation network: the tram and bus stations are situated in front of the building, while Aurel Vlaicu Metro Station is located at 250m. It was totally refurbished during 2017 and received BREEAM Excellent accreditation.

## AMENITIES

- Restaurant
- Pharmacy

- Notary
- Medical Centre
- Café

#### PLACE TO GROW


Globalworth Plaza has a retail area on the ground floor with all the amenities: medical services, notary, restaurants, pharmacy, coffee shop and is within a 2-minute walking distance from Promenada Mall. The lobby is decorated with natural details with wooden walls and natural green vertical gardens.



## Property details

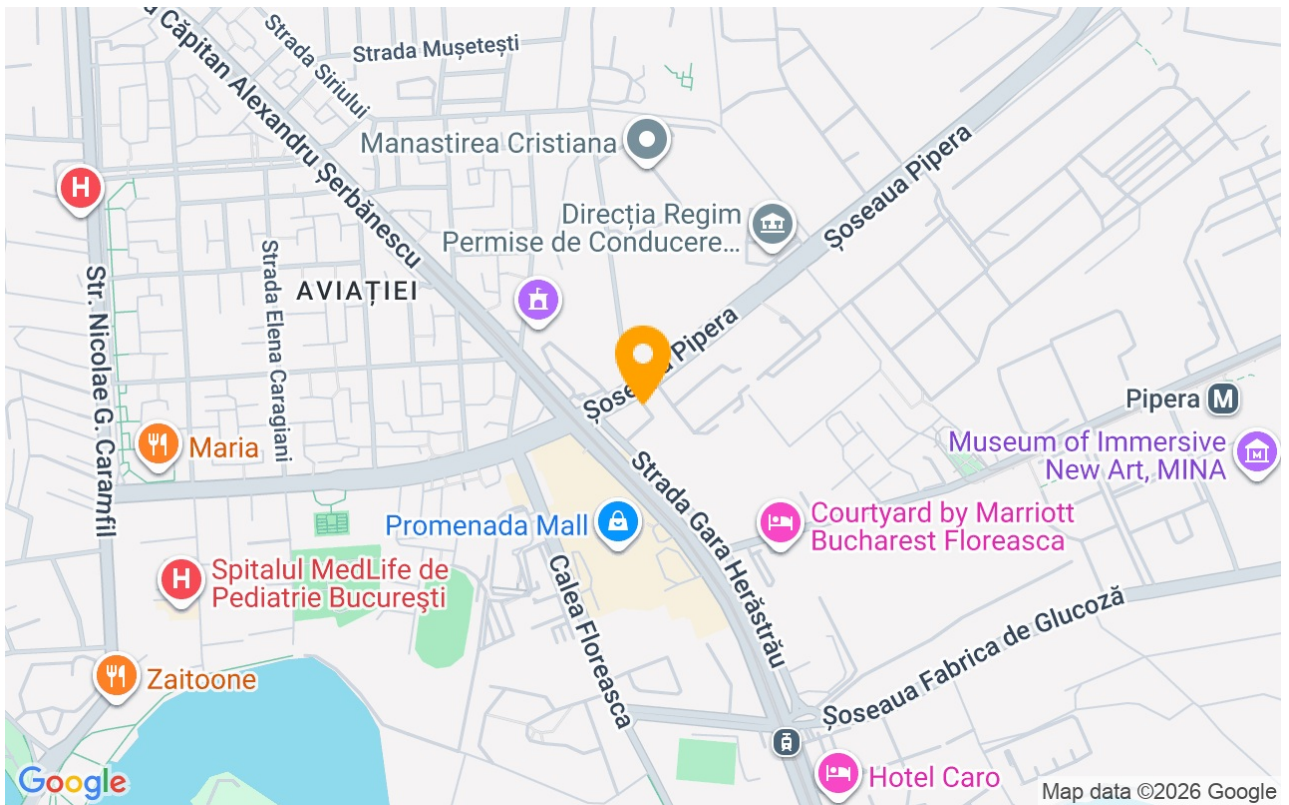
<b>Constructed surface</b>	386m <sup>2</sup>
<b>Building type</b>	Block
<b>Year built</b>	2010
<b>Year renovated</b>	2017
<b>State</b>	Finished
<b>Elevator</b>	Yes
<b>Common service charges</b>	1737.00 EUR

## Amenities

 Not furnished



## Location



## Photos

