



Violetta Tudorache

+40 729 005 624

contact@blissimobiliare.ro
(<mailto:contact@blissimobiliare.ro>)

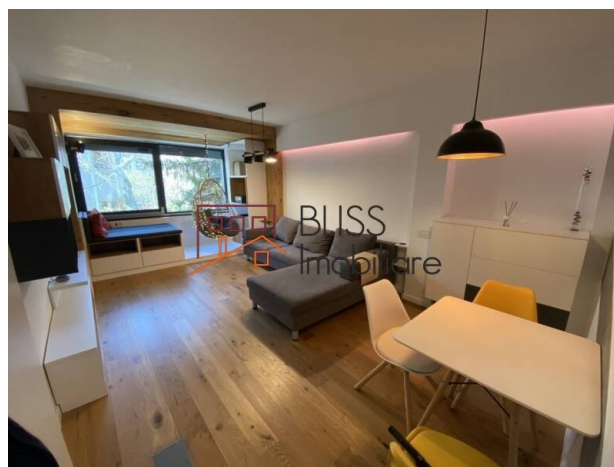
Updated on 7 September 2023

2 bedroom apartment

📍 Piata Natunile Unite, Bucharest

Web Reference

#107431



<https://blissimobiliare.ro/en/apartment-2-bedrooms-for-rent-km-0-ultracentral-bucharest-107431>
(<https://blissimobiliare.ro/en/apartment-2-bedrooms-for-rent-km-0-ultracentral-bucharest-107431>)

Description

2-bedroom apartment with 72m2 useful, located in Piata Unirii area (5 minutes walk from Izvor metro station or 10-12 minutes from Unirii station) on the 2nd / 3rd floor in a block without seismic risk.

It is a smart home suitable for a family / couple:

Everything can be controlled vocally and remotely from any device via Alexa or Google Home (phone, laptop, etc.) respectively thermostats, air conditioning, lights, shutters, alarm, etc.

It has a yard behind the block to park one (or more cars)

There is the possibility to charge the electric car at an 8Kwh charging station right from the yard to the parking lot.

The heating is on the floor through its own central heating

Storage spaces exist both in the apartment and in the basement of the block / storage room

In summer, the apartment enjoys a green view of flowering trees

The apartment also has a garage, but it is not currently available (but you can park in the inner courtyard of the building, as mentioned above).

A list of features would be:

8kwh charging station for car with parking in the backyard

own boiler

underfloor heating

roborock smart vacuum cleaner

washing machine with dryer (controllable online)

dishwasher

refrigerator

ironing board

iron

2 TVs and a projector with projection screen

coffee machine

wireless chargers for phones

motion sensors (which automatically turn on ambient lights at night)

alarm







video camera at the entrance to the apartment and in the yard at the parking area

z-wave, zigbee, wireless controller for all smart devices in the house.

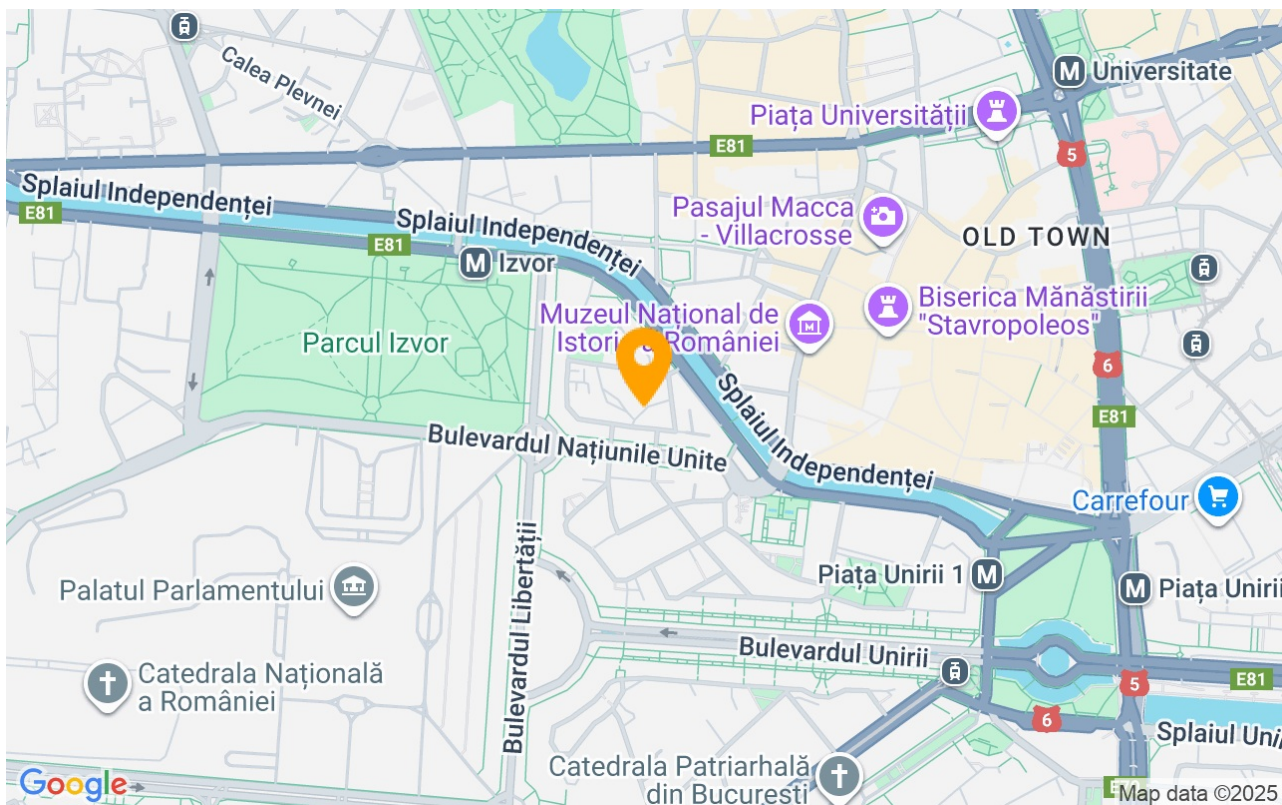
Property details

| | |
|-----------------------|--------------|
| Rooms no. | 3 |
| Useable surface | 72m² |
| Apartment type | Apartment |
| Type of rooms | Independent |
| Type of comfort | Comfort 1 |
| Bedrooms no. | 2 |
| Kitchens no. | 1 |
| Bathrooms no. | 1 |
| Building type | Block |
| Year built | 1960 |
| Config | P+3 |
| Floor | 2 |
| State | Finished |
| Elevator | No |
| Parking outside | 1 |
| Storage no. | 1 |
| Earthquake risk class | Consolidated |

Amenities

-  Equipped kitchen
-  Dishwasher
-  Furnished
-  Private heating
-  Suitable for office
-  Air conditioning

Location



Photos

