



Violetta Tudorache

+40 729 005 624

contact@blissimobiliare.ro
(mailto:contact@blissimobiliare.ro)

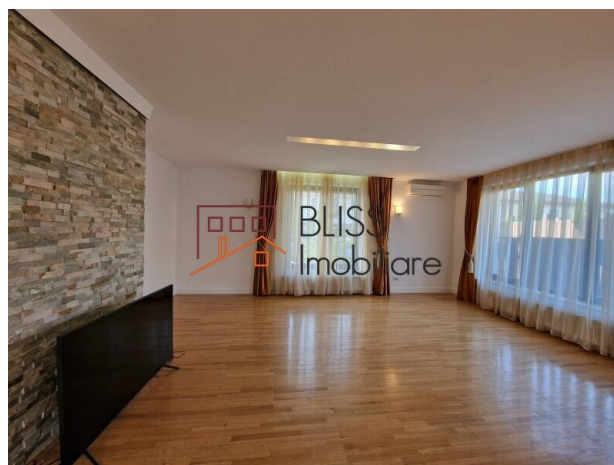
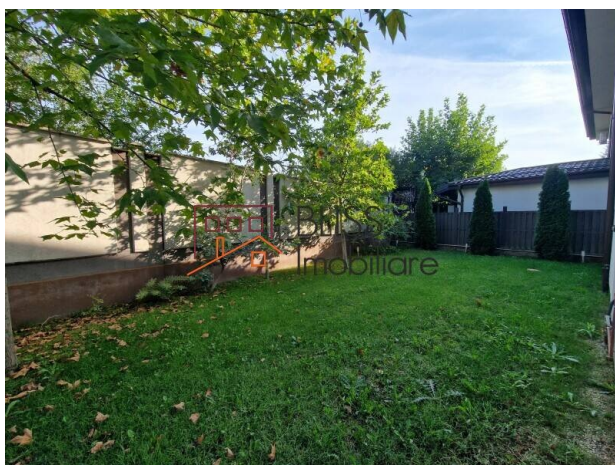
Updated on 26 January 2026

6-Bedroom Villa with Private Garden and Garage, 290sqm Usable

875,000 EUR

Web Reference
#107959

📍 Oxford Gardens Pipera, Pipera, Bucharest / Ilfov



<https://blissimobiliare.ro/en/villa-5-bedrooms-for-sale-iancu-nicolae-pipera-bucharest-ilfov-107959>
(<https://blissimobiliare.ro/en/villa-5-bedrooms-for-sale-iancu-nicolae-pipera-bucharest-ilfov-107959>)

Description

Superb villa with 5 bedrooms and open space attic with a total of 3 bathrooms and a service toilet that has 2 large storage spaces, unfurnished, located in the Oxford Gardens Residential Complex.

Luxury gated compound close to American School and Baneasa Forest

It was built in 2019 and has a useful surface of 290 sqm and is configured on P+1+M. The land on which this wonderful house is located benefits from a total area of 350 square meters. It also benefits from a spacious garage with storage space and a technical room with a washing machine and dryer.

Oxford Gardens is considered a luxury residential complex, a fact due to the adjacent services provided to future tenants.

The villas of the Oxford Gardens complex present refined English style through architecture, landscaping, finishes and amenities.

Also, the special appearance is highlighted by natural stone, massive parquet, the bathrooms by furniture imported from Italy, the kitchens - appliances, and the terraces combine natural stone with noble wood.

The Oxford Gardens complex is located in a luxury area in the North of the capital across from the American School.

It is built in harmony with nature, enjoying at the same time the direct vicinity of the Băneasa Forest, which offers generous green spaces similar to English gardens.

Property details

Rooms no.	6
Useable surface	290m ²
Constructed surface	320m ²
Bedrooms no.	5
Kitchens no.	1
Bathrooms no.	3
Toilets no.	1
Building type	Villa
Year built	2019
Balconies no.	1
State	Finished
Total land	350m ²
Print	120m ²
Courtyard	220m ²
Parking inside	1
Parking outside	1
Common service charges	220.00 EUR

Amenities



Equipped kitchen



Dishwasher



Not furnished (Willing to furnish)



Private heating



Air conditioning

Location



Photos

