



**Violetta Tudorache**

+40 729 005 624

contact@blissimobiliare.ro  
(mailto:contact@blissimobiliare.ro)

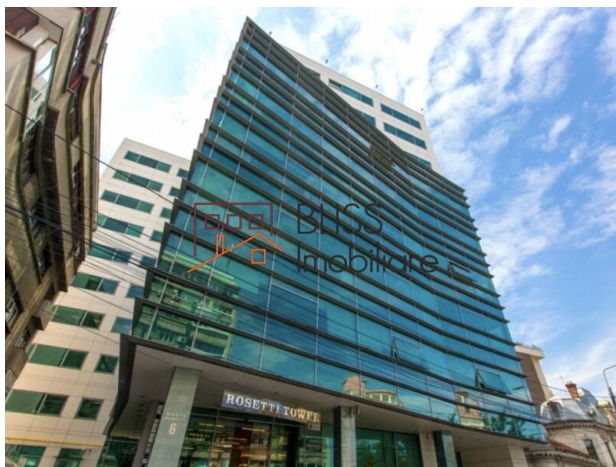
Updated on 22 October 2025

## office space

📍 Maria Rosetti Tower, Batistei, Bucharest

Web Reference

**#108314**



<https://blissimobiliare.ro/en/office-space-for-rent-km-0-ultracentral-bucharest-108314>  
(<https://blissimobiliare.ro/en/office-space-for-rent-km-0-ultracentral-bucharest-108314>)

## Description

Office space in Maria Rosetti Tower, on the 2nd floor - 392 sqm.

In an area surrounded by the aura of the last century, right in the heart of the city, "Maria Rosetti Tower" is one of the emblems of Bucharest. The Maria Rosetti building is located in the central area, which enjoys easy access to all public transport.

Maria Rosetti Tower is a Class A office building located in the downtown area of Bucharest, on Maria Rosetti Street. The building is placed at 500 meters distance from Magheru Boulevard, in the proximity of Gradina Icoanei Park.

The car accessibility is made on one-way streets that connects the building with the main boulevards in the central area (Magheru Boulevard, Calea Mosilor etc.). The public transport is found in pedestrian distance (5-12 minutes walking) from the building and includes bus and tram lines, together with metro and all means at Universitatii Square.

Maria Rosetti Tower was completed in 2008 and includes a total of 6,600 sq m GLA of A-class standards.

- Status: completed
- Year of completion: 2008
- Floors: S+P+9
- GLA: 6.600 m<sup>2</sup>
- GLA / Floor: 660 m<sup>2</sup>
- Parking (spaces): 80

## Facilities

- Reception Services Coffee Shop
- Cafeteria Restaurant
- Banking point ATM

## Technical Specs





- BMS - Building Management System HVAC
- Air Conditioning Centralised Heating
- Suspended Ceiling Open-able Windows
- Controlled Access Security guard 24/7
- Elevator/s Back-up Generator
- CCTV / Video Surveillance Smoke/Heat Detectors
- Carpeting



Property details

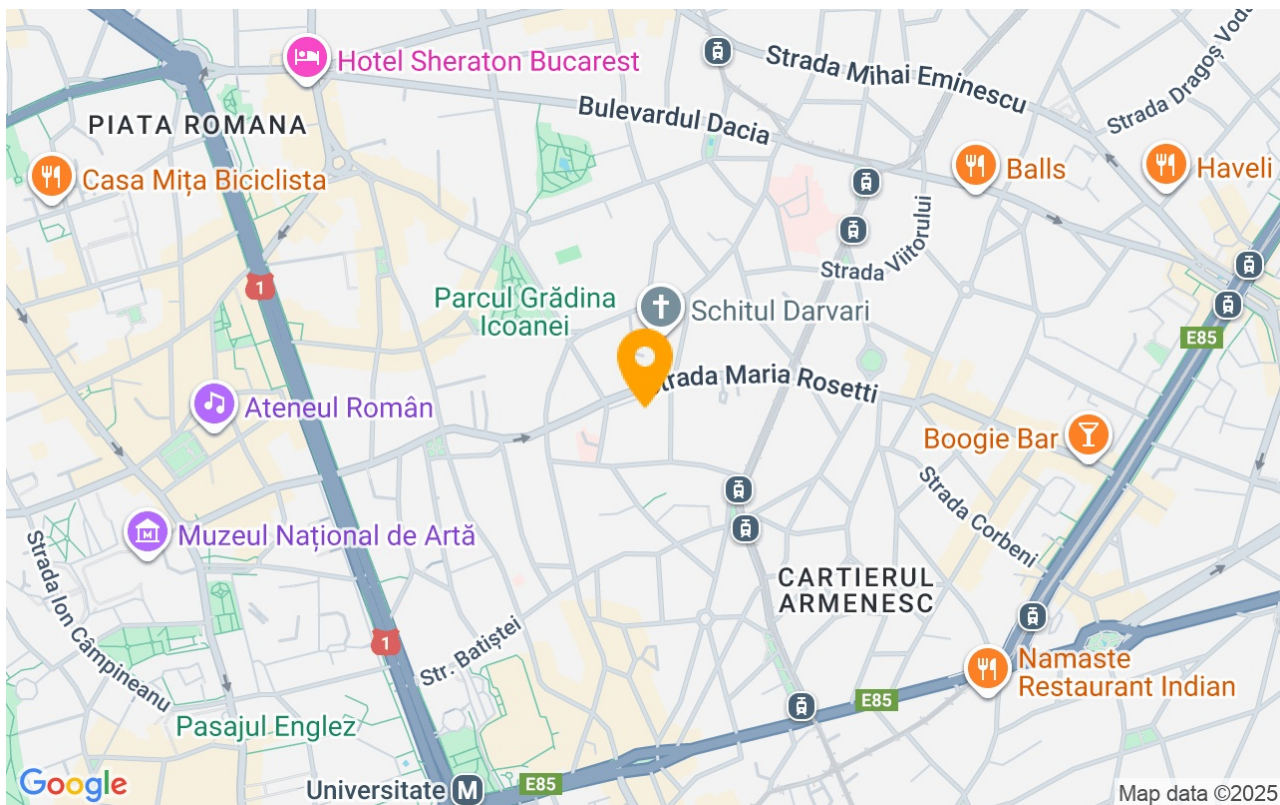
Useable surface	392m²
Kitchens no.	1
Bathrooms no.	1
Building type	Block
Year built	2008
State	Finished
Elevator	Yes
Common service charges	1764.00 EUR

Amenities

-  Not furnished
-  Building heating
-  Suitable for office
-  Air conditioning



## Location



## Photos

