



Violetta Tudorache

+40 729 005 624

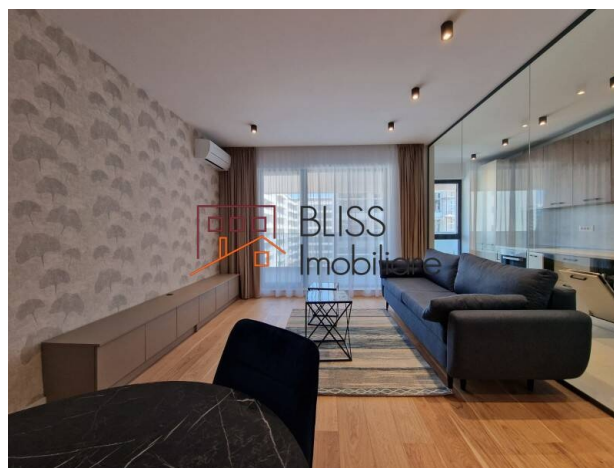
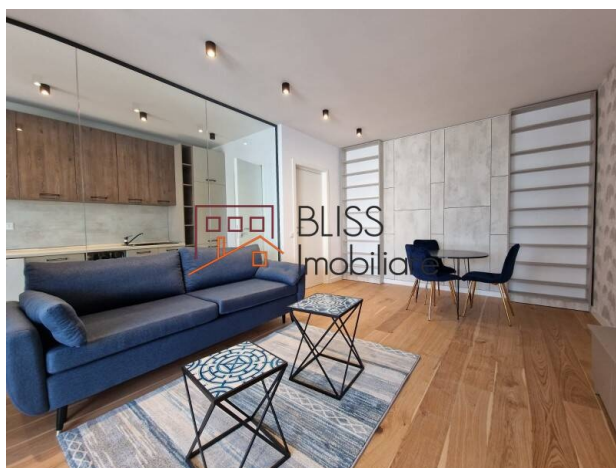
contact@blissimobiliare.ro
(<mailto:contact@blissimobiliare.ro>)

Updated on 10 June 2024

Luxurious and spacious 1 bedroom Apartment in Floreasca

Web Reference
#108497

📍 Nusco City, Floreasca Business Park
Promenada Mall, Bucharest



<https://blissimobiliare.ro/en/apartment-1-bedroom-for-rent-aviatiei-promenada-mall-metro-pipera-bucharest-108497> (<https://blissimobiliare.ro/en/apartment-1-bedroom-for-rent-aviatiei-promenada-mall-metro-pipera-bucharest-108497>)

Description

Bliss Imobiliare presents a 1 bedroom apartment in the Nusco City complex, located in the heart of the business area in the north of the city and in the immediate vicinity of the effervescence areas of the Aviation and Floreasca.

Near Pipera and Aurel Vlaicu metro stations, Promenade Mall

The apartment has a usable area of 63sqm (built area of 78sqm) divided as follows:

- Living room with dining area and access to the generous terrace;
- Fully equipped kitchen, including dishwasher;
- Spacious and bright bedroom;
- Bathroom.

The property is optimally divided for any family, the rooms being fully furnished and modernly equipped.

Among the facilities we want to mention the individual heating system, air conditioning and an underground parking space.

Located in the north of the city, right in the heart of the business area of Bucharest and in the immediate vicinity of the Aviation and Floreasca areas, the first phase of the residential complex of the proportions of a city is close to:

- Pipera and Aurel Vlaicu metro stations,
- Promenade Mall,
- Pipera business district and Floreasca business district.

Excellent positioned in a high quality project with landscaped playgrounds, indoor garden and large green areas.

The complex has many great access roads so you can get to the office, shopping and subway extremely quickly, the green park inside will make you forget that it is so close to work.

Nusco City is thought out in detail for every element: exceptional finishes, efficient partitions, large glazed surfaces, 2.500sqm of spectacularly landscaped green spaces with tall plants and trees, wide streets and alleys, generous terraces, children's playgrounds, parking spaces for bicycles.

A concept designed for the choice of your home or for friends. A sustainable and responsible community, an effective environment for the relaxation of adults and the harmonious development of children.

Everything is superlative for your home!

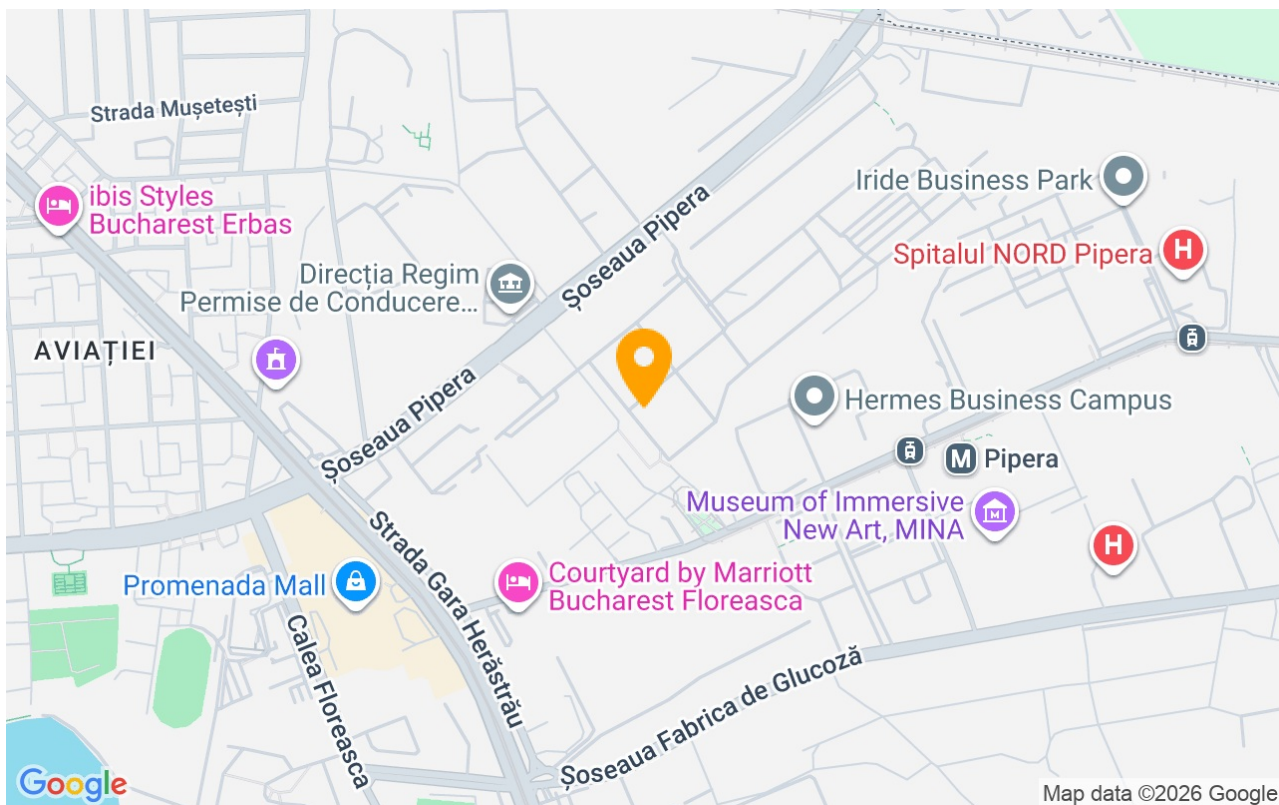
Property details

Rooms no.	2
Useable surface	63m²
Constructed surface	78m²
Apartment type	Apartment
Type of rooms	Independent
Type of comfort	Comfort 1
Bedrooms no.	1
Kitchens no.	1
Bathrooms no.	1
Building type	Block
Year built	2022
Config	1S+P+7
Floor	4
Balconies no.	1
State	Finished
Elevator	Yes
Parking inside	1

Amenities

-  Equipped kitchen
-  Dishwasher
-  Furnished
-  Private heating
-  Air conditioning

Location



Photos

