

**Violetta Tudorache**

☎ +40 729 005 624

✉ contact@blissimobiliare.ro
(mailto:contact@blissimobiliare.ro)

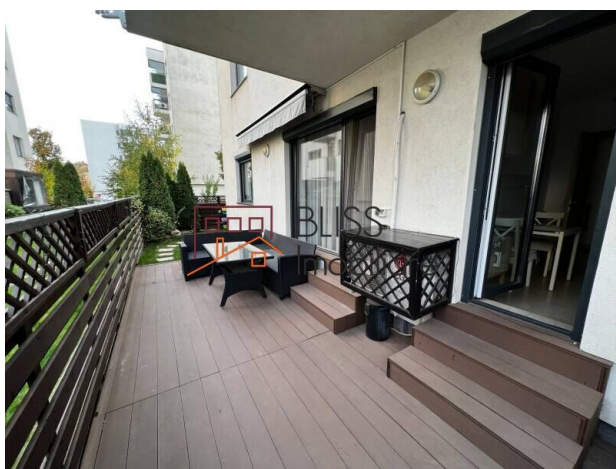
Updated on 16 September 2025

2-Room Apartment With Parking Space Included

📍 Cartier Greenfield 1, Baneasa Padure,
Bucharest

Web Reference

#110922



<https://blissimobiliare.ro/en/apartment-1-bedroom-for-rent-iancu-nicolae-pipera-bucharest-110922>
(<https://blissimobiliare.ro/en/apartment-1-bedroom-for-rent-iancu-nicolae-pipera-bucharest-110922>)

Description

This 1-bedroom apartment is located in the heart of the sought-after Greenfield neighborhood, near Băneasa, Iancu Nicolae, and Pipera. Surrounded by forest and fresh air, the area offers peace and quiet, while still being close to international schools, shopping centers, and business hubs.

Located In One Of The Most Sought-After Areas In Bucharest

Functional and Comfortable Layout

- 1-bedroom apartment on the ground floor of a modern 5-story building completed in 2016
- Efficient layout, fully furnished and equipped with contemporary appliances
- Private garden of 53 sqm – beautifully arranged, perfect for relaxing or entertaining

Private Garden with Premium Features

- Outdoor seating area with electric pergola
- Lawn and ornamental plants, automatic irrigation system
- Wooden storage shed (approx. 10 sqm)

High-Quality Amenities and Finishes

- Underfloor heating throughout the apartment
- Air conditioning
- Washer-dryer, dishwasher, TV
- Modern furniture and high-end appliances
- Dedicated parking space included

Secure and Well-Serviced Community

- Gated access with 24/7 security, barriers, and surveillance cameras
- Family-friendly neighborhood with:
- Playgrounds for children
- Cafés, restaurants, and grocery stores
- Public transport access via two STB bus lines

Key Highlights:

- Quiet, green setting – ideal for families or couples
- Spacious private garden – your own green retreat
- Modern comfort and quality living in one of Bucharest's most desirable residential areas

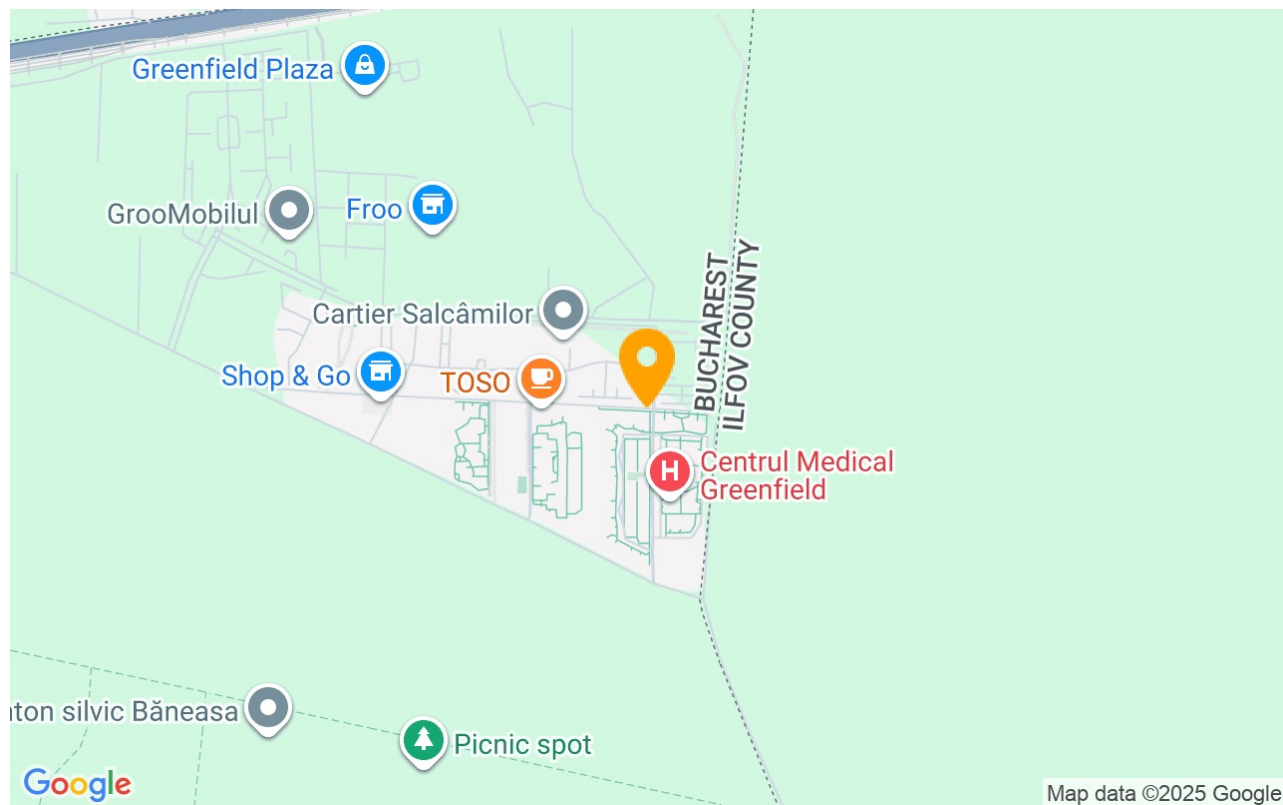
Property details

Rooms no.	2
Useable surface	49m²
Constructed surface	53m²
Apartment type	Apartment
Type of rooms	Semi-independent
Type of comfort	Comfort 1
Bedrooms no.	1
Kitchens no.	1
Bathrooms no.	1
Building type	Block
Year built	2016
Config	P+5
Floor	Groundfloor
Balconies no.	1
State	Finished
Elevator	Yes
Parking outside	1
Earthquake risk class	Unclassified

Amenities

-  Equipped kitchen
-  Dishwasher
-  Furnished
-  Private heating
-  Air conditioning

Location



Photos

