



Violetta Tudorache

+40 729 005 624

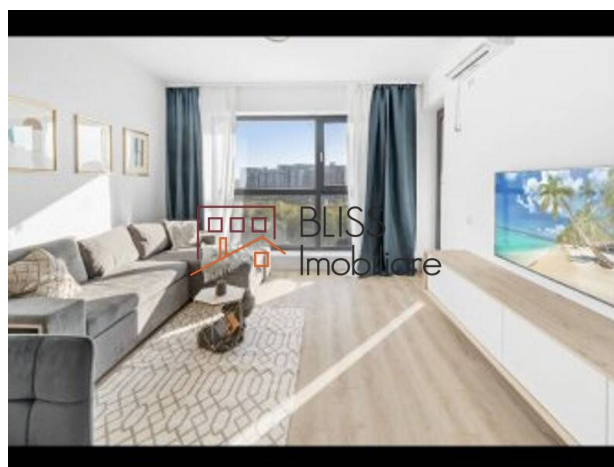
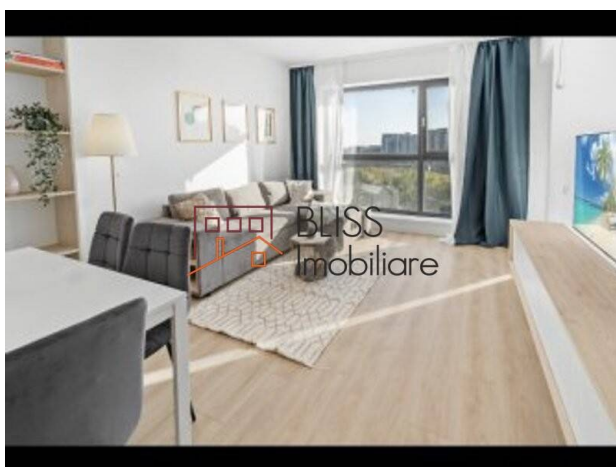
contact@blissimobiliare.ro
(mailto:contact@blissimobiliare.ro)

Updated on 13 November 2023

1-bedroom apartment fully furnished and equipped

Web Reference
#111712

📍 Onix Park-North Area Residence, Pipera OMV
Rond, Bucharest / Ilfov



<https://blissimobiliare.ro/en/apartment-1-bedroom-for-rent-iancu-nicolae-pipera-bucharest-ilfov-111712>
(<https://blissimobiliare.ro/en/apartment-1-bedroom-for-rent-iancu-nicolae-pipera-bucharest-ilfov-111712>)

Description

BLISS Imobiliare presents a 1-bedroom apartment, located on the 10th floor of a building in the residential complex Onix Park - North Area Residence, located in the Aviatiei area.

The apartment is very bright, facing South.

The apartment has a total area of 60 square meters, and is divided into 1 spacious living room with dining area, kitchen, bedroom and 2 bathrooms, and benefits from underfloor heating.

The residential complex of which the apartment is a part includes numerous facilities and offers a range of services and benefits near the house, such as: landscaped green spaces, promenades, commercial spaces/supermarket, spa center and relaxation area, security and video surveillance and numerous underground and above-ground parking spaces.

The apartment is close to the hottest business center of the Capital, but also to the elite schools in the northern area of Bucharest, such as the American School, British School, Cambridge School, Olga Gudynn International School, etc.

For trips outside the city, it is easy and fast to reach DN1 and Autorstrada A3, and the airport can be reached in 30 minutes by car. Other transportation alternatives are bus lines 112, 135, 243, 343, 449, 416, 450, 459, with stations nearby and Aurel Vlaicu or Pipera Metro, located 30 minutes on foot or 15 minutes by car.

Also, the important commercial spaces in the North area are a few minutes away by car, such as Pipera Plaza at 12 minutes, Promenada Mall at 11 minutes and Baneasa Shopping City at 27 minutes.

Property details


Rooms no.	2
Constructed surface	60m ²
Apartment type	Apartment
Type of rooms	Independent
Bedrooms no.	1
Kitchens no.	1
Bathrooms no.	2
Building type	Block
Year built	2022
Config	P+11
Floor	10
State	Finished
Elevator	Yes


Amenities

 Equipped kitchen

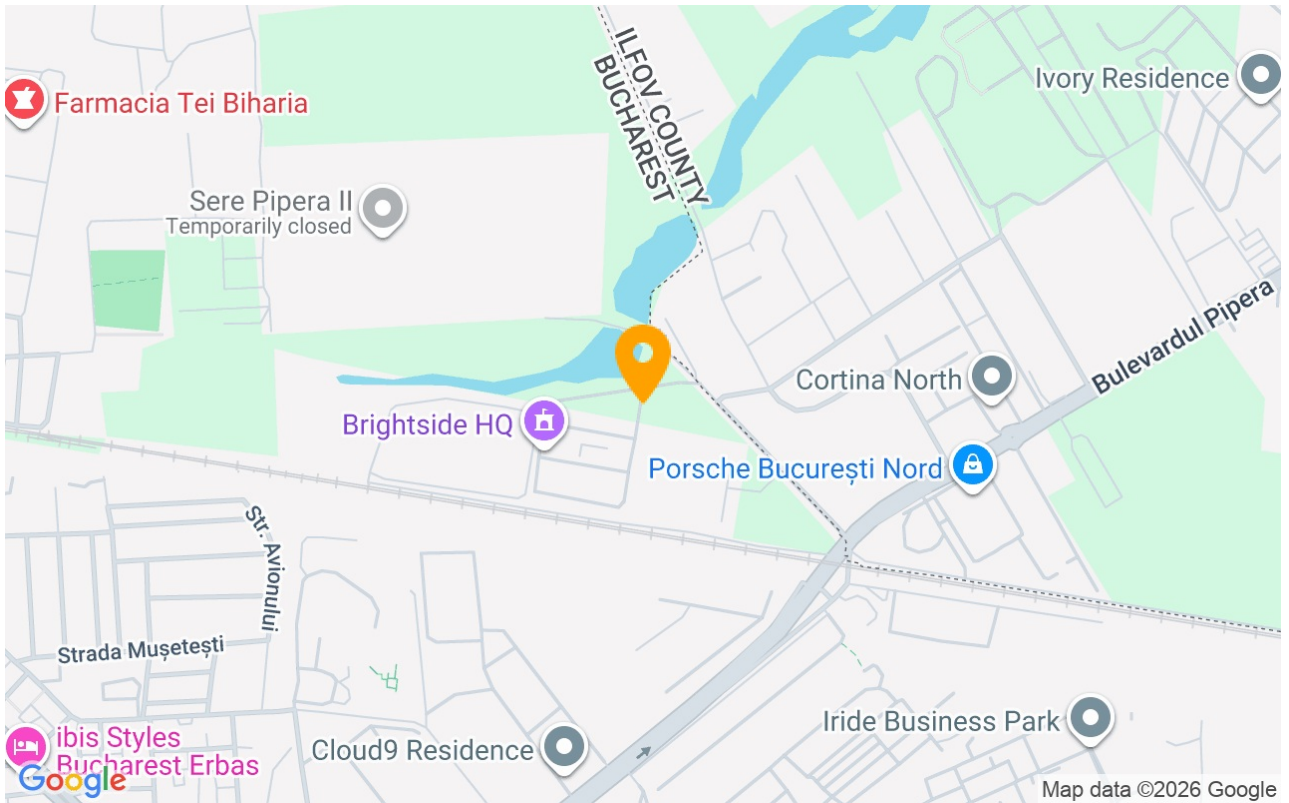
 Dishwasher

 Furnished

 Building heating

 Suitable for office

Location



Photos

