

**Violetta Tudorache**

☎ +40 729 005 624

✉ contact@blissimobiliare.ro

(mailto:contact@blissimobiliare.ro)

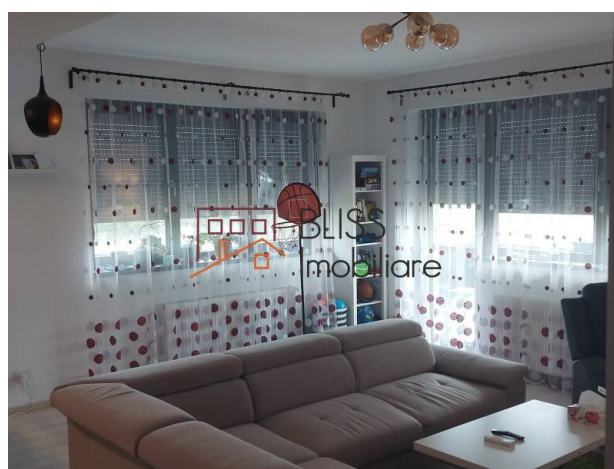
Updated on 13 February 2023

2 bedoom Apartment with outdoor parking space

Web Reference

#112384

📍 Popasului | Padurea Cretuleasca | Matei Millo, Bucharest / Ilfov



<https://blissimobiliare.ro/en/apartment-2-bedrooms-for-sale-iancu-nicolae-pipera-bucharest-ilfov-112384> (<https://blissimobiliare.ro/en/apartment-2-bedrooms-for-sale-iancu-nicolae-pipera-bucharest-ilfov-112384>)

Description

BLISS Imobiliare presents a 2 bedroom apartment, in the Avangarde area.

Near Promenada, Băneasa Shopping City, Lidl, Mega Image

Now you can enjoy both the peace of nature and the opportunities of the city!

The location near the Boldu Creteasca Forest and the benefits of the building make it the right choice in the long term.

The property is located in a privileged area, where there are no buildings higher than 3 floors and ensures your comfort through high quality standards and connection with the most interesting areas in the northern part of the capital.

The apartment consists of 3 rooms (2 bedrooms plus a living room), an open-space kitchen, 2 bathrooms, a hall and a balcony with a total area of 83.5 square meters.

The thermal comfort is achieved with the individual heating sytem.

The outdoor parking space is included in the price.

The block has 3 floors and 15 apartments, it was completed in 2017 and the apartment is on the 1st floor.

It has quality finishes (tiles, parquet, thermal insulation, metal door, aluminum external roller shutters on all the windows), the interior walls are made of brick, external insulation with 10 cm polystyrene.

The apartment is equipped with an Ariston Chaffoteaux stove, oven and hood, kitchen furniture and equipped bathrooms.

In the vicinity we have:

- Boldu Cretuleasca Forest,
- Avangarde Forest 6,
- Lidl, Mega Image, Lemon Retail Park,
- Kindergartens and schools (Bel Sorriso, Avangarde Kids, Secondary School 1 and 2)
- The exit on the A3 and the Bucharest ring road,
- Means of public transport at a 3-minute walk (bus 416 - connects with the Pipera Metro, 461
- Provides access to the Aviation area and Stefan cel Mare, 473
- Ensures the connection with the Baneasa Commercial Complex)
- 20 minutes to Promenada mall, 15 minutes to Băneasa Shopping City, 17 minutes to Pipera metro station Green spaces, relaxation areas and everything you need for a sustainable lifestyle!





Invest in your home today, and enjoy your choice! A beautiful life means being close to nature and the opportunities offered by the city.

An advantageous alternative for all those looking for a home with access to outdoor activities and spaces, the building perfectly combines the dynamism of the city with the tranquility of nature.

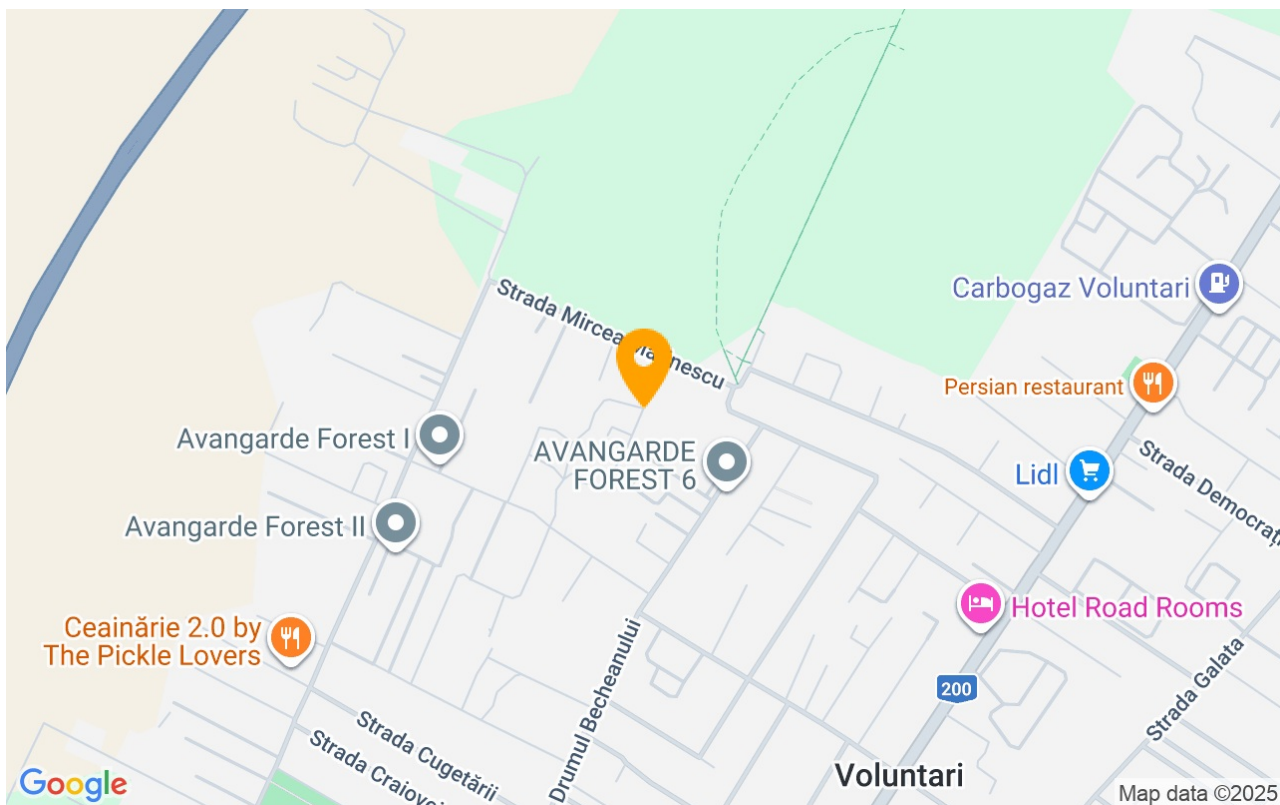
Property details

Rooms no.	3
Useable surface	77m²
Constructed surface	84m²
Apartment type	Apartment
Type of rooms	Independent
Type of comfort	Comfort 1
Bedrooms no.	2
Kitchens no.	1
Bathrooms no.	1
Toilets no.	1
Building type	Block
Year built	2017
Config	P+3
Floor	1
Balconies no.	1
State	Finished
Elevator	Yes
Parking outside	1

Amenities

-  Equipped kitchen
-  Not furnished
-  Private heating
-  Air conditioning

Location



Photos

