



**Violetta Tudorache**

+40 729 005 624

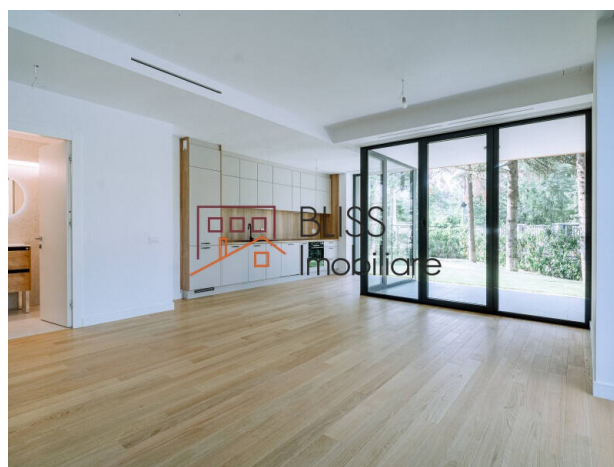
contact@blissimobiliare.ro  
(mailto:contact@blissimobiliare.ro)

Updated on 4 June 2026

## Bright 2-bedroom apartment with generous private garden

Web Reference  
**#116195**

BRICKVILLE Residence, Iancu Nicolae Baneasa  
Zoo, Bucharest / Ilfov



<https://blissimobiliare.ro/en/apartment-2-bedrooms-for-rent-iancu-nicolae-pipera-bucharest-ilfov-116195> (<https://blissimobiliare.ro/en/apartment-2-bedrooms-for-rent-iancu-nicolae-pipera-bucharest-ilfov-116195>)

### Description

This bright 2 bedroom apartment offers a balanced mix of comfort, functionality and privacy, designed for a relaxed lifestyle in a modern residential building. The efficient layout and well-defined spaces create an airy and welcoming living environment.

## Situated in one of Bucharest's the most sought after residential areas

The living area feels open and elegant, complemented by premium finishes, air conditioning and underfloor heating. A fully equipped kitchen and two bathrooms enhance everyday comfort, while direct access to the 156.8 sqm private garden naturally extends the interior space, creating an ideal outdoor retreat.

The building features elevator access, underground parking and landscaped green areas, contributing to a calm and premium residential atmosphere. Contemporary architecture and a limited number of residences support a more private and refined living experience.

The location offers quick connections to key city destinations while maintaining the comfort of a quiet residential setting, close to schools, shopping facilities and leisure areas.

Contact BLISS Immobiliare to discover more details and see if this property matches your lifestyle.




## Property details

<b>Rooms no.</b>	3
<b>Useable surface</b>	90m <sup>2</sup>
<b>Constructed surface</b>	111m <sup>2</sup>
<b>Apartment type</b>	Apartment
<b>Type of rooms</b>	Independent
<b>Type of comfort</b>	Comfort 1
<b>Bedrooms no.</b>	2
<b>Kitchens no.</b>	1
<b>Bathrooms no.</b>	2
<b>Building type</b>	Block
<b>Year built</b>	2024
<b>Config</b>	1S+P+3
<b>Floor</b>	Groundfloor
<b>State</b>	Finished
<b>Elevator</b>	Yes
<b>From developer</b>	No

## Amenities

 Equipped kitchen

 Dishwasher

 Not furnished

 Building heating

 Air conditioning



## Location



## Photos

