

**Violetta Tudorache**

☎ +40 729 005 624

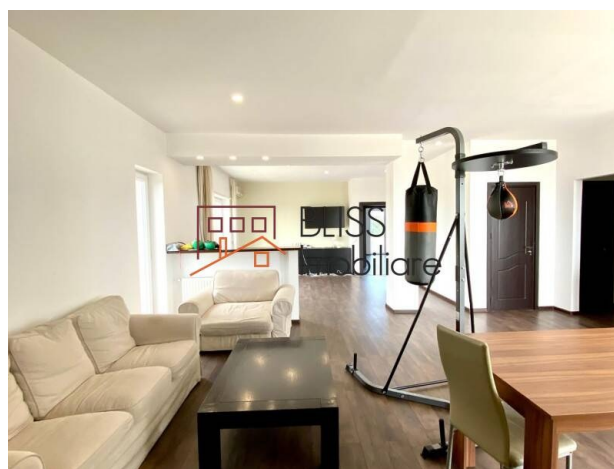
✉ contact@blissimobiliare.ro
(mailto:contact@blissimobiliare.ro)

Updated on 7 October 2024

3-bedroom penthouse with a beautiful view

Web Reference

#117139

📍 High Residence, Iancu Nicolae Jolie Ville ,
Bucharest / Ilfov

<https://blissimobiliare.ro/en/apartment-3-bedrooms-for-rent-iancu-nicolae-pipera-bucharest-ilfov-117139> (<https://blissimobiliare.ro/en/apartment-3-bedrooms-for-rent-iancu-nicolae-pipera-bucharest-ilfov-117139>)

Description

BLISS Imobiliare presents a spacious 3-bedroom penthouse, in the High Residence complex, which is located in the residential area of Pipera, on Strada Erou Iancu Nicolae, opposite the Mark Twain International School.

The penthouse offers a superb view of the area.

The excellent position in which the property is located offers quick access to the points of interest in the area, both with a personal car and with public transport, being close to bus stations through which lines 301, 148 and 167 pass, which reach points such as Piata Romana, Calea Dorobantilor, Piata Pressei Libere, Bd. Lacul Tei, etc.

The penthouse is located very close to some of the most sought after international schools and kindergartens in the capital, which makes it the perfect residence for a family with children focused on a harmonious growth and development, at high standards. Mark Twain International School is opposite the complex, Cambridge School of Bucharest is a 2-minute walk away, and Kids Kingdom Kindergarten is a 5-minute walk away, and the American School is a 7-minute drive away, the British School of Bucharest 3 minutes away, etc.

Also, the Pipera area offers a variety of local businesses, such as shops, grocers, cafes, restaurants, gyms, beauty salons, clinics (aesthetic, medical, dental and veterinary), car washes and car services, thus ensuring everything you need for a modern and comfortable lifestyle.

The penthouse has a usable area of 161 sqm and is divided into 3 bedrooms of 18, 15 and 23 sqm, a spacious living room of approximately 66 sqm, 3 bathrooms and a furnished and equipped kitchen.




It also has an extremely spacious terrace of 112 square meters, the perfect place to relax in the open air, but in the privacy of your own home. In addition to the terrace, the penthouse has 4 smaller balconies.

The property also comes with 2 parking spaces.

Property details

Rooms no.	4
Useable surface	161m²
Constructed surface	334m²
Apartment type	Apartment
Type of rooms	Semi-independent
Type of comfort	Comfort 1
Bedrooms no.	3
Kitchens no.	1
Bathrooms no.	3
Building type	Block
Year built	2008
Config	1S+P+7
Floor	7
Balconies no.	5
State	Finished
Elevator	Yes
Parking inside	2

Amenities

-  Equipped kitchen
-  Semi furnished
-  Air conditioning

Location



Photos

