

**Violetta Tudorache**

☎ +40 729 005 624

✉ contact@blissimobiliare.ro
(mailto:contact@blissimobiliare.ro)

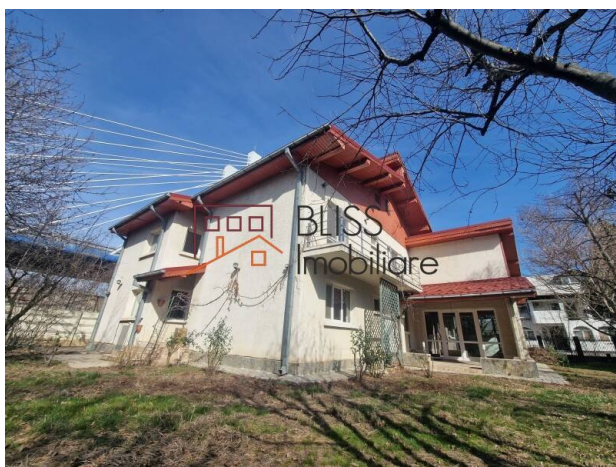
Updated on 25 September 2024

6 bedroom villa

📍 Baneasa Padure, Bucharest

Web Reference

#117675



<https://blissimobiliare.ro/en/villa-6-bedrooms-for-sale-iancu-nicolae-pipera-bucharest-117675>
(<https://blissimobiliare.ro/en/villa-6-bedrooms-for-sale-iancu-nicolae-pipera-bucharest-117675>)

Description

The P+1 villa (and bridge), built in 1999 and located in front of Padurea Băneasa, represents a spacious and versatile property, offering numerous possibilities. With an area of 474 square meters on a generous plot of 1000 square meters, this villa impresses with its size and diversified possibilities of use.

The building is divided as follows: the ground floor has an area of 229 square meters, the first floor has 232 square meters, and the basement occupies 13 square meters. This structure offers an efficient organization of space, and the 6 bedrooms allow the setting up of two separate spaces for two families or can be used for offices, thus offering flexibility in use.

The property includes 4 bathrooms, a service WC and a kitchen, along with a generous living area and a kitchen/dining room, ideal for meetings and socializing.

Annexes, such as attics usable as laundry or workshop spaces, add an additional dimension of functionality and adaptability to the needs of future tenants or users of the space.

The cellar and garage with 2 parking spaces complete the amenities offered by this property. The solid structure of concrete and brick walls gives the property resistance over time and stability.






An outstanding feature of this home is the lightness, and the spacious rooms offer plenty of storage space. The possibility of having a second entrance through the back adds a touch of practicality and accessibility.

In conclusion, this villa is an attractive option for those looking for a generous, versatile and bright space.

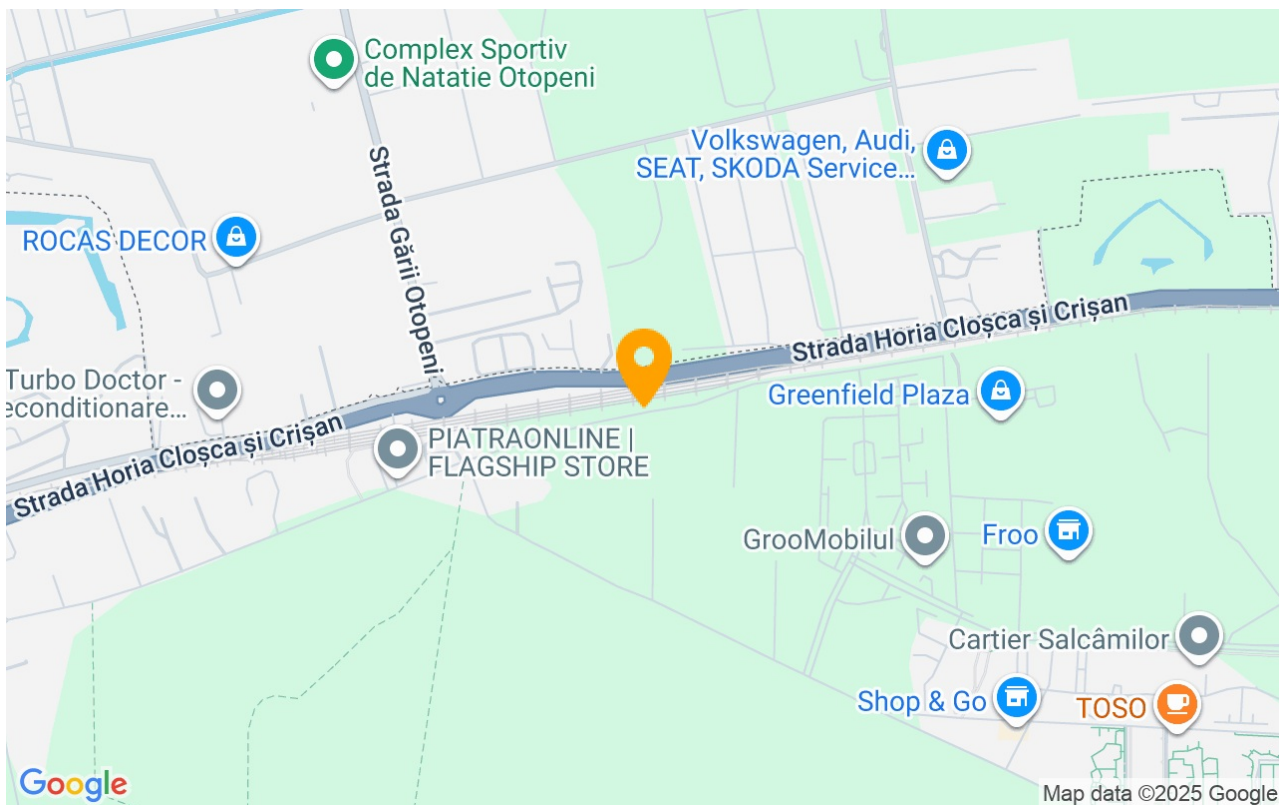
Property details

Rooms no.	10
Useable surface	450m²
Constructed surface	474m²
Bedrooms no.	6
Kitchens no.	1
Bathrooms no.	4
Toilets no.	1
Building type	Villa
Year built	1999
State	Finished
Total land	1000m²
Courtyard	526m²
Parking inside	2
Storage no.	1

Amenities

-  Equipped kitchen
-  Not furnished
-  Private heating
-  Suitable for office
-  Fireplace

Location



Photos

