



Violetta Tudorache

+40 729 005 624

contact@blissimobiliare.ro
(mailto:contact@blissimobiliare.ro)

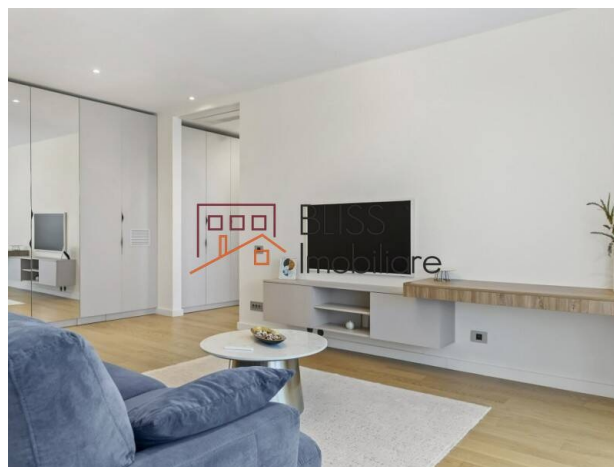
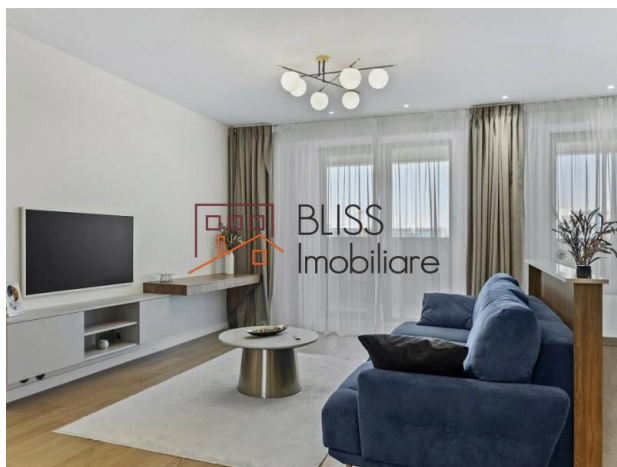
Updated on 30 May 2024

1 bedroom apartment

Aviatiei Tower, Floreasca Business Park
Promenada Mall, Bucharest

1,300 EUR +VAT / month

Web Reference
#117739



<https://blissimobiliare.ro/en/apartment-1-bedroom-for-rent-aviatiei-promenada-mall-metro-pipera-bucharest-117739> (<https://blissimobiliare.ro/en/apartment-1-bedroom-for-rent-aviatiei-promenada-mall-metro-pipera-bucharest-117739>)

Description

BLISS Imobiliare presents a superb 1-bedroom apartment, fully furnished and equipped, located in the Northern area of the capital, in the Aviatiei Tower residential complex.

It has a usable area of 65 square meters and is divided into a bedroom, a spacious living room with an open space kitchen and a bathroom. The apartment also has a generous terrace of 13 square meters with an unobstructed view.

The finishes and equipment of the apartment are of high quality, carefully selected, and among them are: smart video intercom (with the possibility to receive and make direct calls to the reception and other tenants in case of emergency), dishwasher, dryer with pump heat, spacious dressing room, smart air conditioning system (air conditioning and underfloor heating, with multiple operating modes from the control panel or, optionally, from the mobile phone), etc.

Aviației Tower is located near 2 of the largest business centers in Bucharest (Novo Park Business Center, HP Global E-business Center), but also multinational companies such as Genpact or Nestle.





Promenada Mall is only 500 m away, and in the vicinity there are World Class fitness gyms, shopping centers, top banking institutions, exclusive restaurants and cafes, modern pharmacies, kindergartens, schools and a medical clinic of international standards.

The excellent location is complemented by easy access to the means of transport, being 8 minutes from the metro, bus and tram station (Aurel Vlaicu, respectively 112, 135 and N119). Also, Henri Coanda Airport is only 15 minutes away.

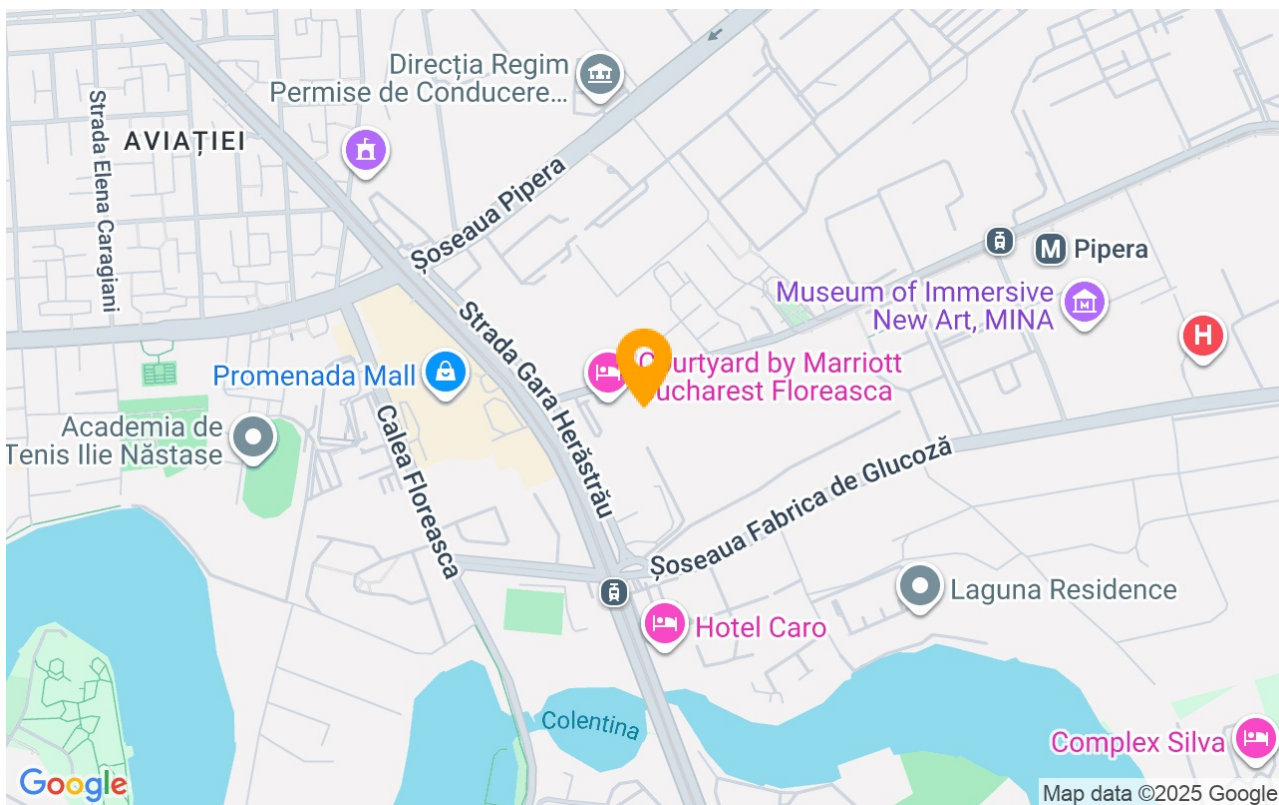
Property details

Rooms no.	2
Useable surface	65m²
Constructed surface	79m²
Apartment type	Apartment
Type of rooms	Independent
Type of comfort	Comfort 1
Bedrooms no.	1
Kitchens no.	1
Bathrooms no.	1
Building type	Block
Year built	2021
Config	2S+P+11
Floor	5
Balconies no.	1
State	Finished
Elevator	Yes

Amenities

-  Equipped kitchen
-  Furnished
-  Building heating
-  Air conditioning

Location



Photos

