



Updated on 8 Decembrie 2023

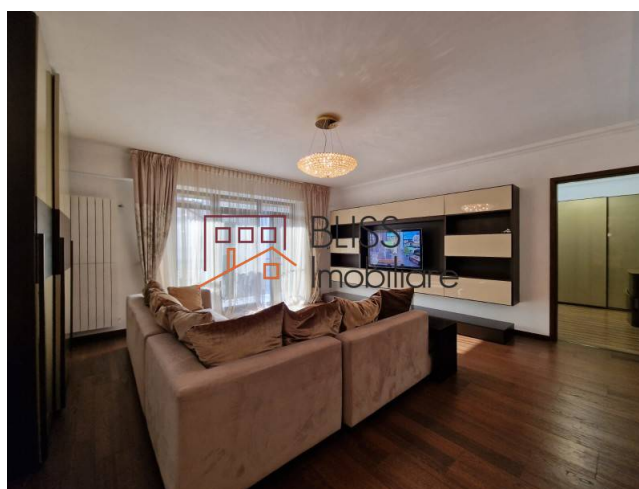
## spacious apartment of 128 sqm with garage

📍 Kiseleff, Bucharest

**2,000 EUR / month**

Web Reference

**#117788**



<https://blissimobiliare.ro/en/apartment-2-bedrooms-for-rent-dorobanti-primaverii-kiseleff-aviatorilor-bucharest-117788>

### Description

BLISS Imobiliare presents a 2-bedroom apartment, located in the Kiseleff area, close to the Arc de Triomphe.

The apartment is spacious, with a total area of 128 square meters.

The useful surface of the apartment is 113 square meters and it is divided into 2 bedrooms, each with its own bathroom, a spacious living room with a dining area, a hall with another bathroom next to it, a kitchen and 2 balconies.

The apartment is furnished in a modern, refined and tasteful style, and is equipped with modern, high-quality appliances.

A great advantage of this apartment is the underground garage, which offers space and protection for your car, so you will get rid of the worry of the lack of parking spaces.

The area where the apartment is located is one of the most prestigious and coveted areas in Bucharest, being an exclusive and sophisticated environment, with a unique combination of history, nature and urban elegance. The houses and apartments here are known for their sophisticated design, but also for preserving the historical character.

In terms of nature, Kiseleff Park and Herastrau Park are a few minutes away, so you will always have an oasis of peace and greenery at your disposal, ideal for walks or moments of relaxation in nature.

This area is one of the safest in Bucharest, due to the presence of embassies, which add an additional level of

security, but also an international air.

Also, the area is known for the variety of refined restaurants, cafes, luxury shops, social clubs and other facilities are just a few steps away, offering you all the comfort and entertainment you need.

In terms of accessibility, the Kiseleff area is excellently connected to the public transport network, facilitating access to any part of the city. Among the bus lines that pass through the area are 282, 381, 41, 24, 45, 205, 783. It also has good connections with the main roads and highways.

Therefore, living here, you will benefit from a sophisticated lifestyle and all the advantages of an elite residential area in the center of Bucharest.

Property details	
Rooms no.	3
Useable surface	113m <sup>2</sup>
Constructed surface	128m <sup>2</sup>
Apartment type	Apartment
Type of rooms	Semi-independent
Type of comfort	Comfort 1
Bedrooms no.	2
Kitchens no.	1
Bathrooms no.	2
Toilets no.	1
Building type	Block
Year built	2011
Config	1S+P+5
Floor	1
Balconies no.	2
State	Finished
Elevator	Yes
Parking inside	1

## Amenities



Equipped kitchen



Dishwasher



Furnished



Private heating



Air conditioning

Location



Photos

