

**Violetta Tudorache**

☎ +40 729 005 624

✉ [contact@blissimobiliare.ro](mailto:contact@blissimobiliare.ro)

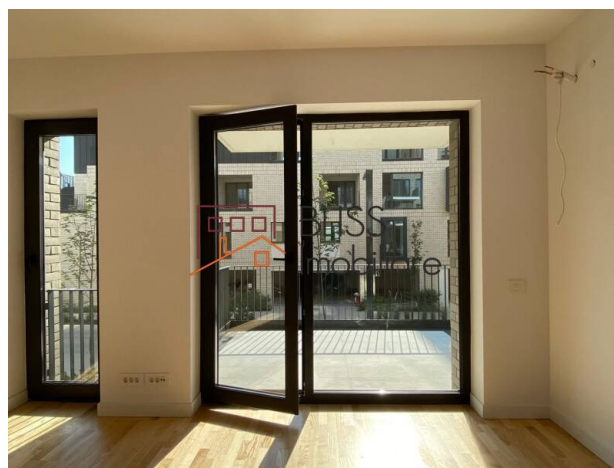
(mailto:contact@blissimobiliare.ro)

Updated on 21 February 2024

**unfurnished 1-bedroom  
apartment in complex with  
swimming pool**

Web Reference

#117968

📍 Avalon Estate, Pipera OMV Rond, Bucharest /  
Ilfov

<https://blissimobiliare.ro/en/apartment-1-bedroom-for-sale-iancu-nicolae-pipera-bucharest-ilfov-117968>  
(<https://blissimobiliare.ro/en/apartment-1-bedroom-for-sale-iancu-nicolae-pipera-bucharest-ilfov-117968>)

**Description**

BLISS Imobiliare presents an unfurnished 1-bedroom apartment, located in the Avalon Estate residential complex in the Pipera area, Voluntari, in the immediate vicinity of the Pipera lake, Porsche Pipera and Pipera Plaza.

The apartment is bright, facing South-West and has large windows.

It is located on the 1st floor of the building and is oriented at the same time towards the interior of the complex, having an opening to the other buildings inside and to the park, so you will be protected from noise and you will be able to enjoy the peace.

The usable area of the apartment is 43.5 square meters and the total area is 51.6 square meters, and you will have a very generous balcony. It is semi-detached, and the entrance to the apartment is through the living room and dining room with an open space kitchen of 25 square meters. The apartment also has a bedroom with dressing room and bathroom.

The apartment benefits from heating through the central block and through the floor, and separate metering through the thermal energy meter and the distributors, an aspect that will lead to reduced maintenance costs.

The complex where the apartment is located, Avalon Estate, is a new one on the real estate market in the area that harmoniously combines architecture, functionality and nature, and brings a variety of facilities to future tenants.

You will be able to enjoy the swimming pool with a unique design, surrounded by greenery, with a generous surface and a natural filtration system, through plants, which offers a special space for relaxation and fun in the summer months.

You will have at your disposal 28,000 m2 of green spaces and exclusively pedestrian areas with access to the Pipera lake promenade, for relaxing and stress-free walks at any time and any day.

The Gatehouse building at the entrance to the complex will provide permanent concierge services. The elegantly arranged interior spaces will be able to host private or business events, multisensory exhibitions, book launches, workshops, etc., only for community members or with their consent.

Also, the complex introduces a unique Clubhouse concept inspired by premium clubs, where entry is made exclusively on the basis of the membership card. Access to the restaurant, bar, fitness rooms with changing rooms, showers and two dry saunas will be allowed only for community members and their guests.

In the complex, you will have exclusive services and shops, boutique type, for an easier and more beautiful life every day.

One of the great benefits is the private kindergarten, which supports families with children, who will thus escape the daily concerns related to traffic and distances. In addition, it can be used for after-school activities, additional courses, weekend activities or during school holidays.

The apartment is close to the hottest business center of the Capital, but also to the elite schools in the northern area of Bucharest, such as the American School, British School, Cambridge School, Olga Gudynn International School, etc.

For trips outside the city, it is easy and fast to reach DN1 and Autorstrada A3, and the airport can be reached in 30 minutes by car. Other traffic alternatives are bus lines 343, 416, 449, 450, 459, with stations nearby and Aurel Vlaicu or Pipera Metro, located 30 minutes on foot or 10 minutes by car.





Also, the important commercial spaces in the North area are a few minutes away by car, such as Pipera Plaza at 4 minutes, Promenada Mall at 8 minutes and Baneasa Shopping City at 18 minutes.



Property details

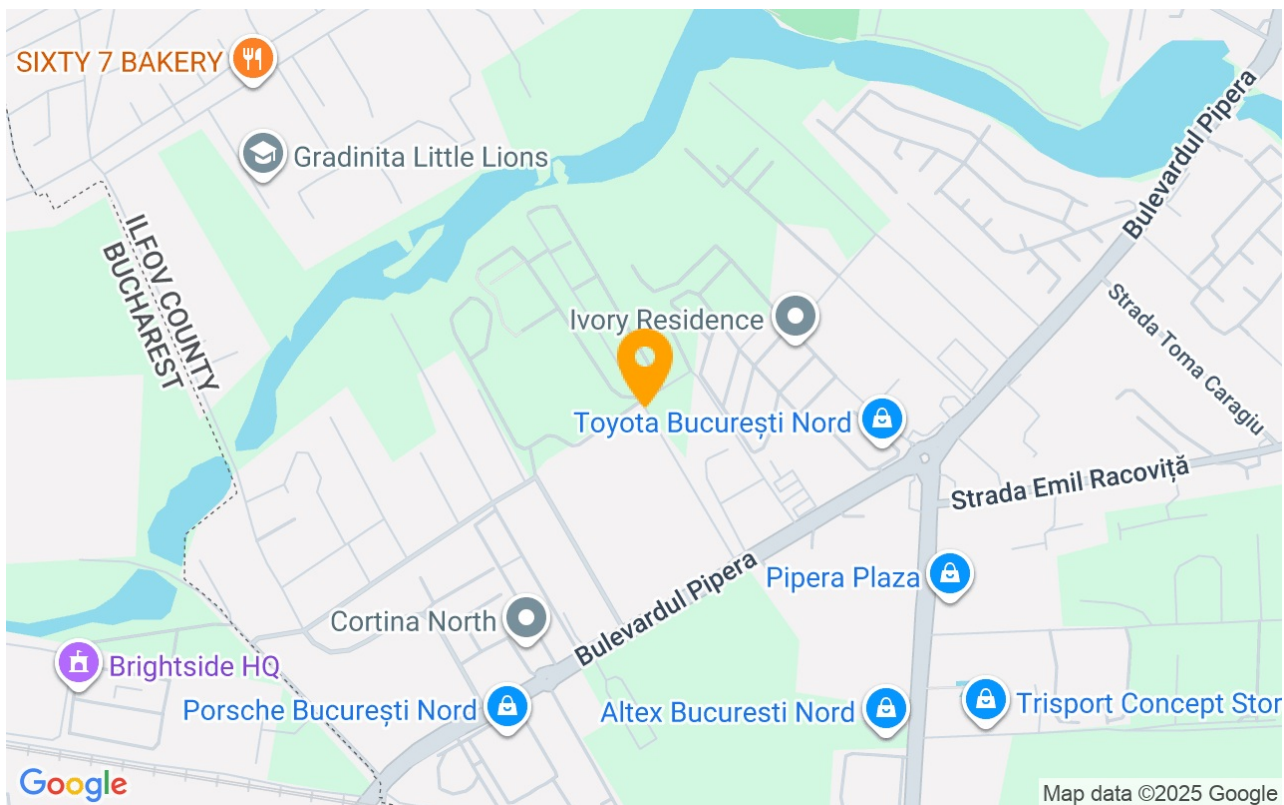
Rooms no.	2
Useable surface	44m²
Constructed surface	52m²
Apartment type	Apartment
Type of rooms	Semi-independent
Type of comfort	Comfort 1
Bedrooms no.	1
Kitchens no.	1
Bathrooms no.	1
Building type	Block
Year built	2023
Config	P+5
Floor	1
Balconies no.	1
State	Finished
Elevator	Yes
From developer	No

Amenities

-  Not furnished
-  Building heating
-  Suitable for office
-  Swimming pool



## Location



## Photos

