



**Violetta Tudorache**

+40 729 005 624

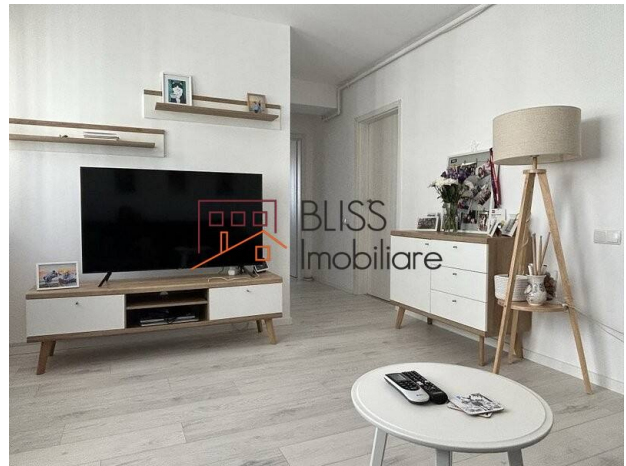
contact@blissimobiliare.ro  
(mailto:contact@blissimobiliare.ro)

Updated on 30 October 2023

## 2-bedroom apartment, semi-furnished and equipped

Web Reference  
**#118246**

📍 Complex Natrom Pipera 1 în București, Pipera  
OMV Rond, Bucharest / Ilfov



<https://blissimobiliare.ro/en/apartment-2-bedrooms-for-sale-iancu-nicolae-pipera-bucharest-ilfov-118246> (<https://blissimobiliare.ro/en/apartment-2-bedrooms-for-sale-iancu-nicolae-pipera-bucharest-ilfov-118246>)

### Description

BLISS Imobiliare presents a chic 2-bedroom apartment, located on the top floor of a building that is part of the Natrom Pipera 1 complex, located in the most active area in the North of Bucharest, the OMV Pipera roundabout near Cubic Center, Toyota, with immediate access on the A3 highway.

## The apartment is offered semi-furnished with modern Mobexpert furniture.

It has a usable area of 58 square meters, divided into 2 bedrooms, a living room, a kitchen, a bathroom, to which is added a nicely furnished balcony for moments of relaxation.

In terms of thermal comfort, the apartment is equipped with its own central heating and air conditioning.

The apartment is close to the hottest business center of the Capital, but also to the elite schools in the northern area of Bucharest, such as the American School, British School, Cambridge School, Olga Gudynn International School, etc.

For trips outside the city, it is easy and fast to reach DN1 and Autorstrada A3, and the airport can be reached in 19 minutes by car. Other transportation alternatives are bus lines 343, 449, 416, 450, 459, with nearby stations and Aurel Vlaicu or Pipera Metro, located 30 minutes on foot or 15 minutes by car.

On the ground floor of the building there is a La Doi Pasi store, so you will be able to stock up whenever you want, without having to travel too far. Also, the important commercial spaces in the Northern area are nearby, such as Pipera Plaza at a 6-minute walk, or Promenada Mall and Baneasa Shopping City, which are approximately 15-20 minutes away by car, thus offering a varied range of shops, entertainment and restaurants.





## Property details

<b>Rooms no.</b>	3
<b>Useable surface</b>	58m <sup>2</sup>
<b>Constructed surface</b>	64m <sup>2</sup>
<b>Apartment type</b>	Apartment
<b>Type of rooms</b>	Semi-independent
<b>Type of comfort</b>	Comfort 1
<b>Bedrooms no.</b>	2
<b>Kitchens no.</b>	1
<b>Bathrooms no.</b>	1
<b>Building type</b>	Block
<b>Year built</b>	2022
<b>Config</b>	1S+P+4
<b>Floor</b>	4
<b>Balconies no.</b>	1
<b>State</b>	Finished
<b>Elevator</b>	Yes

## Amenities

 Equipped kitchen

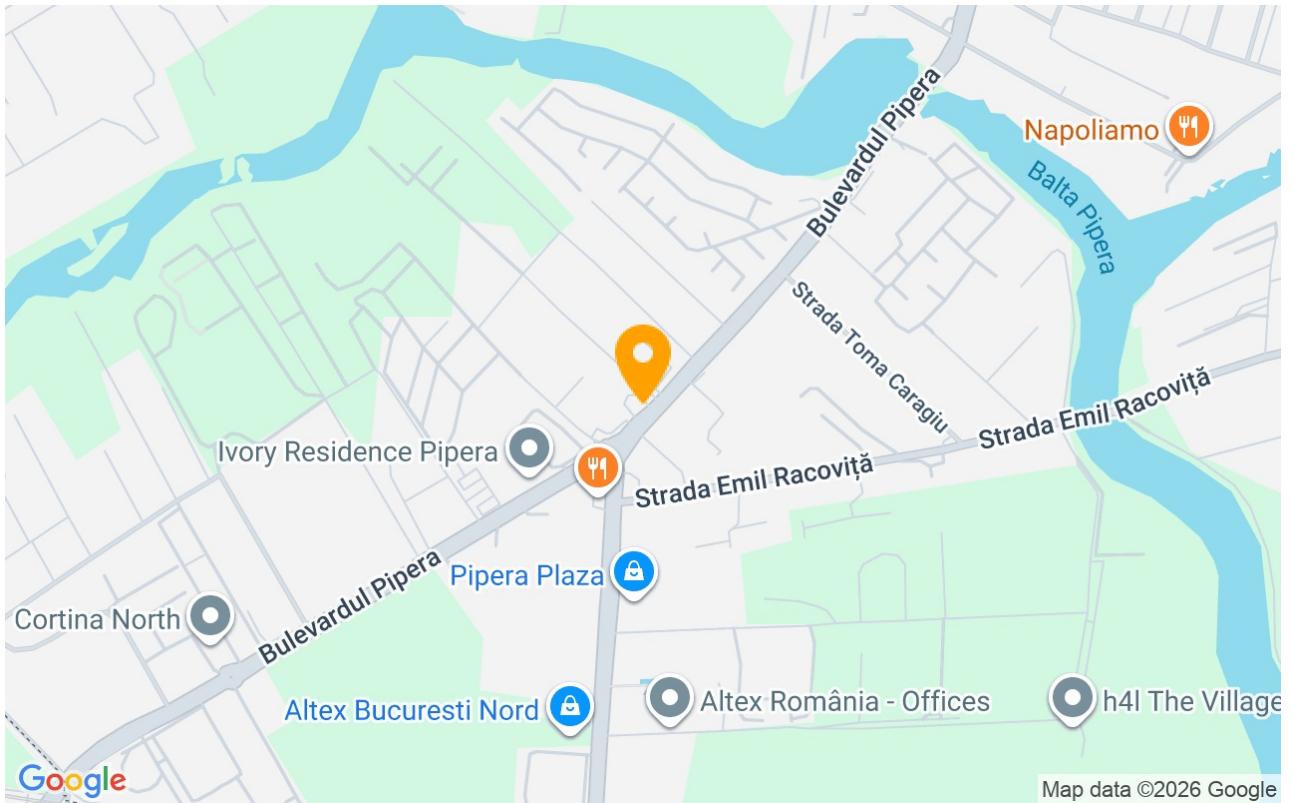
 Semi furnished

 Private heating

 Air conditioning



## Location



## Photos

