

**Violetta Tudorache**

☎ +40 729 005 624

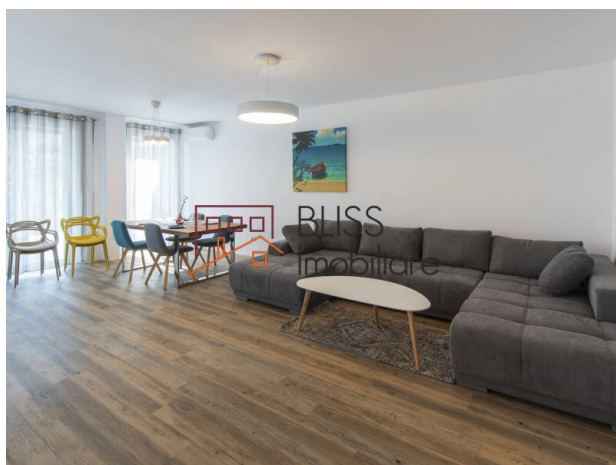
✉ contact@blissimobiliare.ro
(mailto:contact@blissimobiliare.ro)

Updated on 1 November 2024

2-bedroom apartment with garden and terrace overlooking the lake

Web Reference
#118502

📍 WaterFront Residence, Pipera Sud, Bucharest / Ilfov



<https://blissimobiliare.ro/en/apartment-2-bedrooms-for-rent-iancu-nicolae-pipera-bucharest-ilfov-118502> (<https://blissimobiliare.ro/en/apartment-2-bedrooms-for-rent-iancu-nicolae-pipera-bucharest-ilfov-118502>)

Description

BLISS Imobiliare presents a special detached 2-bedroom apartment, located in the Waterfront Residence residential complex, which is located in the Pipera area, near Balta Pipera.

It is offered fully furnished and equipped with high quality products.

The usable area of the apartment is 100 square meters and it is divided into 2 bedrooms, one of which has its own bathroom, another bathroom in the hallway, a generous living room with dining area, closed kitchen and dressing room.

In terms of thermal comfort, the apartment is equipped with its own central heating system, air conditioning, and the heating is done through the floor.

The apartment is designed in such a way that from the living room you have a wonderful view of Balta Pipera, thus bringing the feeling of peace and tranquility to the home every day. In addition, it benefits from both a private garden and a terrace, with an area of 30 square meters each.

The entire residential complex is safe at any time of the day, thanks to the security cameras, which work 24/7. Also, access to the complex is via remote control, and the apartment is equipped with a video intercom.

The property is located in an exceptional area in the North of Bucharest, close to the most important commercial and business hubs in the capital. This area offers everything you need for a modern and comfortable lifestyle, with a variety of restaurants, gyms, supermarkets and shopping centers such as Pipera Plaza, which is 10 minutes away or Lemon Retail Park, which is just 5 minutes away.

You also have quick access to larger shopping centers such as Promenada Mall or Baneasa Shopping City, which are 15-20 minutes away by car.







One of the reasons why the Pipera area is among the most desirable is the variety of elite international schools and kindergartens, such as AISB - Scoala Americana, Mark Twain International School, British School, Olga Gudynn International School, Cambridge School of Bucharest, etc. - it is a maximum of 15 minutes by car from the area of the complex.

Therefore, this apartment is ideal for a family that wants a comfortable and quiet lifestyle, in an exclusive area, connected to everything that matters for growth and development.

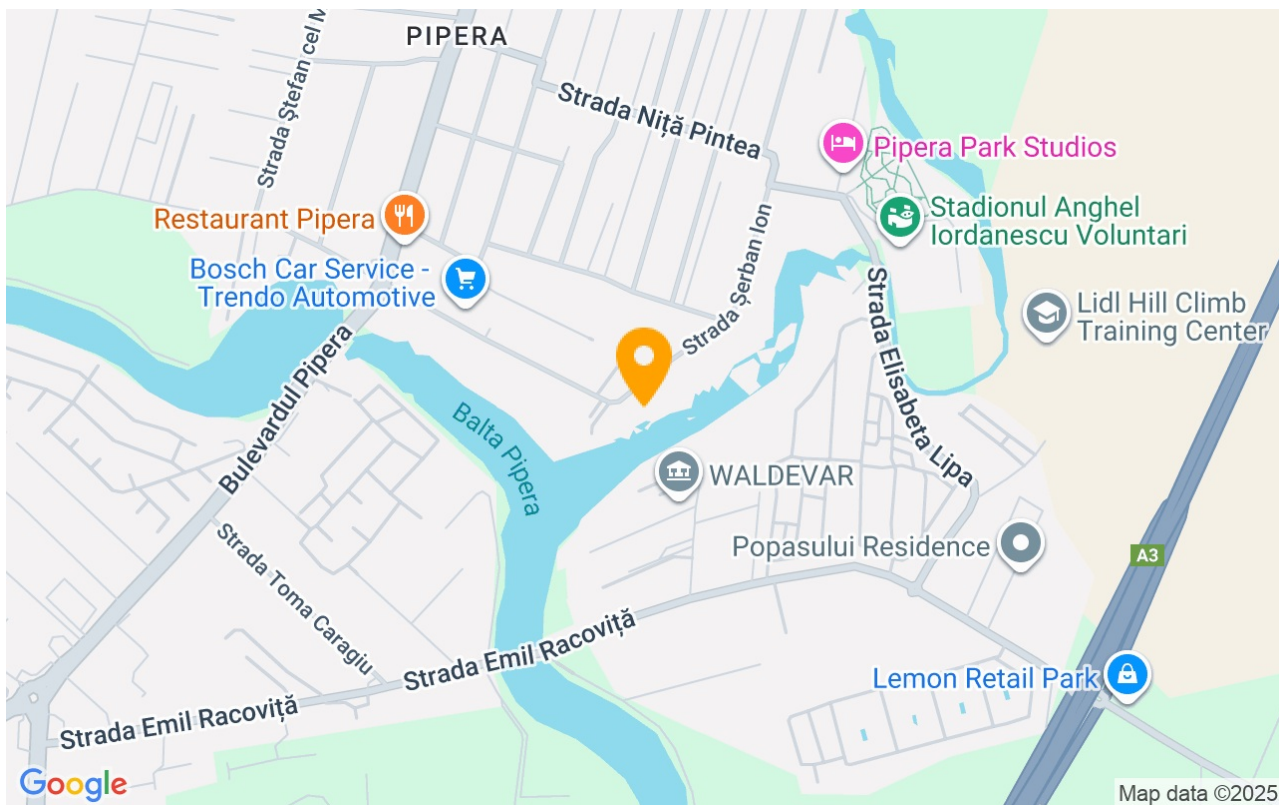
Property details

Rooms no.	3
Useable surface	100m²
Constructed surface	130m²
Apartment type	Apartment
Type of rooms	Independent
Type of comfort	Comfort 1
Bedrooms no.	2
Kitchens no.	1
Bathrooms no.	2
Building type	Block
Year built	2020
Config	DS+HP+2
Floor	Groundfloor
State	Finished

Amenities

-  Equipped kitchen
-  Dishwasher
-  Furnished
-  Private heating
-  Suitable for office
-  Air conditioning

Location



Photos

