

**Violetta Tudorache**

☎ +40 729 005 624

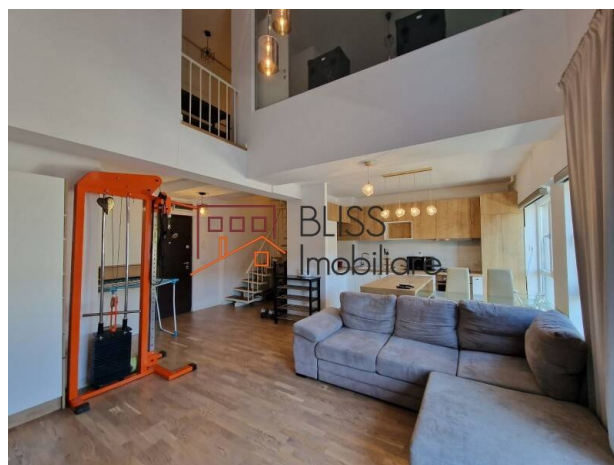
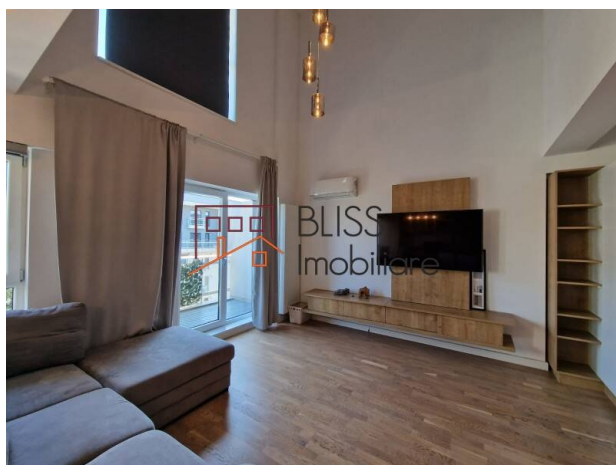
✉ contact@blissimobiliare.ro
(mailto:contact@blissimobiliare.ro)

Updated on 9 August 2024

1-bedroom modern duplex apartment, furnished and equipped

Web Reference

#118637

📍 Belvedere Residences, Fabrica de Glucoza,
Bucharest

<https://blissimobiliare.ro/en/apartment-1-bedroom-for-rent-aviatiei-promenada-mall-metro-pipera-bucharest-118637> (<https://blissimobiliare.ro/en/apartment-1-bedroom-for-rent-aviatiei-promenada-mall-metro-pipera-bucharest-118637>)

Description

BLISS Imobiliare presents a 1-bedroom duplex apartment, located on the top floor of a building in the Belvedere Residences residential complex, which is located in the North area of Bucharest.

The modern duplex is fully furnished and equipped with premium products.

It has a usable area of 62 square meters and is intelligently compartmentalized: on the ground floor there is a spacious living room with an open space kitchen, which also has an exit to the 10 square meter terrace, and a service toilet. Upstairs we have a bedroom, a bathroom and a dressing room.

The complex of which the apartment is a part is excellently positioned in the northern area of the Capital, in the Barbu Vacarescu area, close to the Aviatiei district and with a direct view of Lake Tei.

The short distance from the Iride Business Park, Global City or Swan Office Park business centers makes this duplex suitable for those who work in one of the nearby corporations. Also, access to multiple public transport lines, such as the Pipera and Aurel Vlaicu metro stations, or the bus and tram stations just a few steps away, make moving around the city easy and convenient.

The commercial centers Promenada Mall, Pipera Plaza, Veranda Mall or Baneasa Shopping City are located nearby, at distances between 7 and 20 minutes, thus offering a varied range of shops, entertainment and restaurants for the whole family.

The Belvedere complex includes many facilities for tenants, such as secure access and video monitoring for safety, commercial spaces on the ground floor of the buildings, green spaces in the immediate vicinity of Lake Tei, spacious inner courtyards for relaxing in the free area, playgrounds for children, and places for underground and surface parking.

Property details

Rooms no.	2
Useable surface	62m ²
Constructed surface	85m ²
Apartment type	Apartment
Type of rooms	Independent
Type of comfort	Comfort 1
Bedrooms no.	1
Kitchens no.	1
Bathrooms no.	1
Toilets no.	1
Building type	Block
Year built	2019
Config	1S+P+10
Floor	10
Balconies no.	1
State	Finished
Elevator	Yes
Parking inside	2

Amenities



Equipped kitchen



Dishwasher



Furnished

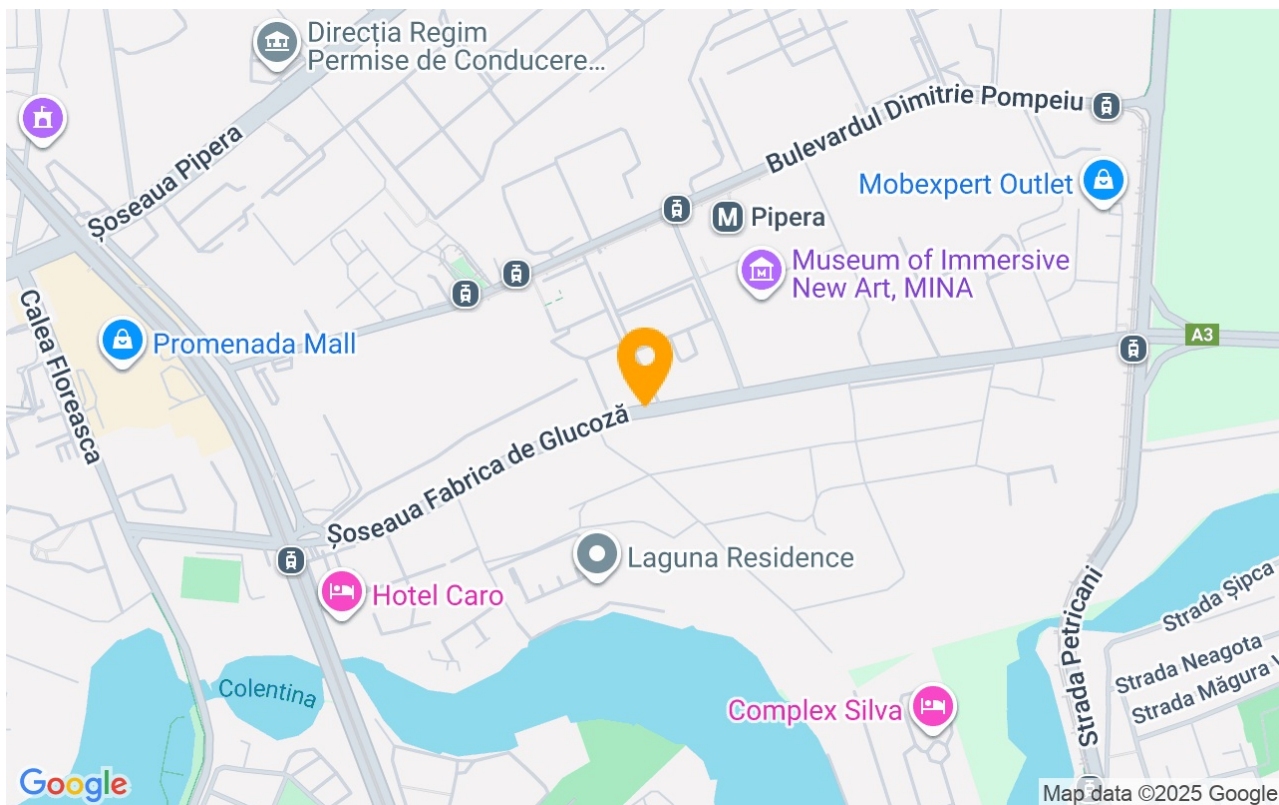


Private heating



Air conditioning

Location



Photos

