

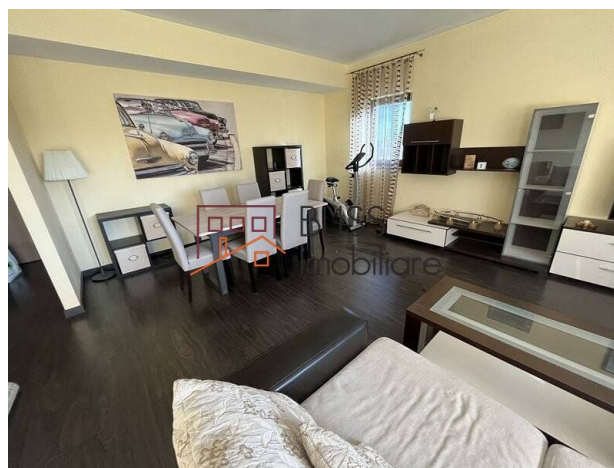
**Violetta Tudorache**

☎ +40 729 005 624

✉ [contact@blissimobiliare.ro](mailto:contact@blissimobiliare.ro)  
(mailto:contact@blissimobiliare.ro)

Updated on 3 November 2023

## **1-bedroom apartment of 81 sqm and underground parking space**

Web Reference  
**#119003**📍 Carina Residence, Iancu Nicolae Jolie Ville ,  
Bucharest / Ilfov

<https://blissimobiliare.ro/en/apartment-1-bedroom-for-rent-iancu-nicolae-pipera-bucharest-ilfov-119003>  
(<https://blissimobiliare.ro/en/apartment-1-bedroom-for-rent-iancu-nicolae-pipera-bucharest-ilfov-119003>)

### **Description**

BLISS Imobiliare presents a 1-bedroom apartment, located on the 2nd floor of a building in the residential complex Carina Residence, in the Iancu Nicolae Pipera area.

## **The property also includes an underground parking space.**

It is a spacious apartment, with a usable area of 81 square meters and is divided into:

- a large and bright living room, with a dining area furnished with new furniture and equipped with a smart TV, audio system
- a bedroom, with a bed, TV and lots of storage space
- 2 bathrooms (one with shower, sink, bidet, storage spaces, and the other with WC, washing machine and storage spaces)
- a large kitchen, fully furnished and equipped (large fridge, new - still in box, gas hob, built-in oven, table, chairs)
- a terrace of 9 sqm

In terms of thermal comfort, the property has its own heating plant and air conditioning.

The Carina Residence residential complex is located in the northern part of Bucharest, in the Băneasa-Pipera residential area, on Drumul Potcoavei street, near the Băneasa Commercial Center and the Băneasa Business & Technology Park.

The complex is located close to Bucharest Zoo and Padurea Baneasa, just a few minutes' walk away, so it is the perfect residence for those who want to be and spend more of their free time in nature.

The area where the apartment is located combines both the tranquility offered by the outskirts of the capital (North of Bucharest) with the functionality of the Pipera neighborhood consisting of shops, medical clinics, gyms and swimming pools, parks and leisure spaces away from urban traffic jams.

Just 3 minutes by car, you will find the Jolie Ville Pipera shopping center, and Baneasa Shopping City is 8 minutes away, offering a varied range of shops, entertainment and restaurants. Also, Baneasa International Airport is at the same distance.

Also, a great advantage of the area is the impressive number of elite international schools and top kindergartens, such as Cambridge School, which is 3 minutes away by car or 15 minutes on foot.

The list of international schools continues with British School, Mark Twain International School, Olga Gudynn International School, AISB - American School, etc., all of which are at a maximum distance of 10-15 minutes by car.



Property details

Rooms no.	2
Useable surface	81m²
Apartment type	Apartment
Type of rooms	Independent
Type of comfort	Comfort 1
Bedrooms no.	1
Kitchens no.	1
Bathrooms no.	2
Building type	Block
Year built	2010
Config	1S+P+5
Floor	2
Balconies no.	1
State	Finished
Elevator	Yes
Parking inside	1

Amenities



Equipped kitchen



Furnished



Private heating



## Location



## Photos

